

THE

WELFORD BUGLE

Issue No 296
December 2023

Next 'Copy' Deadline
26 January 2024



Christmas Advent Windows

HOW IT WORKS:- EACH DAY OF ADVENT A DECORATED WINDOW AROUND THE VILLAGE WILL BE LIT UP.

YOU CAN FIND THEM DAILY OR MAKE A NICE WALK ON CHRISTMAS EVE TO SEE THEM ALL.

MAPS WILL BE ON THE NOTICEBOARDS AROUND THE VILLAGE.

THIS IS PURLY A COMMUNITY EVENT ORGANISED BY WELFORD PRE SCHOOL TO BE ENJOYED BY THE VILLAGE.

A HUGE THANK YOU TO ALL THOSE WHO HAVE DECORATED THEIR WINDOWS.

Green Welford

You are invited to...

A Christmassy Coffee Morning

FRIDAY 22ND DECEMBER
10 TO 12 AT THE VILLAGE HALL



COME AND SING CAROLS

Start Christmas proper the traditional Welford way by joining us on Christmas Eve at 8 o'clock in St Mary's Church for a light-hearted hour of carol singing. All money raised will be divided between the Children's Society and The Cynthia Spencer Hospice. If you are unable to attend but would still like to support these two worthy causes, please contact me, annbarraclough@hotmail.com

Welford in Harmony Christmas Concert

Sunday 10th December
3.00pm in the Chapel

Join us for a feast of festive songs and stories
Conducted by Rebecca Schneider

FREE entry.

Refreshments available. Donations will be shared between the Chapel and our chosen charity, Springbridge Driving for the Disabled.

WELFORD SPORTS FIELD ASSOCIATION



CHRISTMAS QUIZ

Saturday 9th December
Last few tables remaining
See Page 5 for more details

Read online at: <https://www.welfordvillage.org.uk/>

'Copy' for the next Bugle should be sent to: welfordbugle@outlook.com
or directly to: Sheila Scullion, 32 Wakefield Drive, Tel: 575784,
Andrew Parsons, 2 Northampton Rd, 571258
John Nicholas, 25 High Street, Tel: 575422, Susie Bevin, West End Farm, Tel: 575226
TO ARRIVE NO LATER THAN THE 'COPY' DEADLINE MENTIONED ABOVE

Advertisements and Donations to Andrew Parsons, welfordbugle@outlook.com

Date	Food	General	Recycling	Garden
07/12	X			X
14/12	X	X	X	
21/12	X			X
28/12	X		X	
04/01	X	X		
11/01	X		X	
18/01	X			X
25/01	X	X	X	
01/02	X			X

Notes from your Parish Council

Christmas Waste Collections: Due to Christmas Day falling on a Monday this year and Boxing Day on a Tuesday, some properties will have a change for their collections. Affected properties will receive communications to notify them of the collection date change, so please keep an eye out for this.

Garden waste: Those subscribed to the service are advised there will be a short break in collections from 23 December until 5 January.

Christmas Tree collections: Crews will collect real Christmas trees between 8 and 19 January. You do not have to have a garden waste subscription for WNC to take real trees away.

Residents in the Daventry areas should put real Christmas trees out on the day garden waste is due to be collected. Please ensure trees over 6ft tall are cut in half so they fit in the lorries safely.

Real Christmas trees can also be taken to your nearest Household Waste Recycling Centre, details can be found on the WNC website at <https://www.westnorthants.gov.uk/your-council/christmas-west-northamptonshire>

Food waste: Food waste bins will continue to be collected on their usual weekly schedule. Please remember you can recycle leftover raw and cooked foods, including veg peelings, egg shells, out-of-date food, plate scrapings, solid fats, meat and fish bones. Do not put any liquids in the caddy.

Ian Kelly, Clerk to Welford Parish Council

JOSEPH MORRIS



South Kilworth
Tel:- 01858 575210

**HIGH CLASS FAMILY
BUTCHER, FREEZER
SPECIALIST AND
CATERING SUPPLIERS**

All meat locally fed and prepared in our own sympathetically run abattoir.

Visit our website at:-
www.joseph-morris.co.uk

KELVIN BROAD PLUMBING HEATING ELECTRICAL

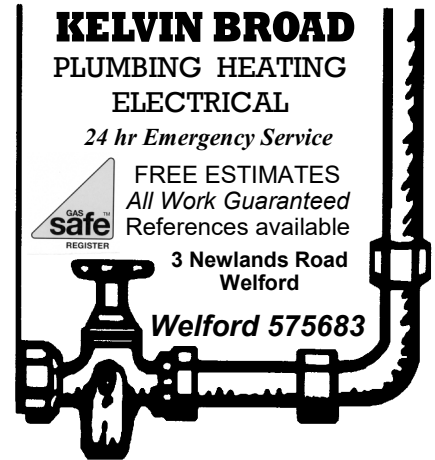
24 hr Emergency Service



FREE ESTIMATES
All Work Guaranteed
References available

3 Newlands Road
Welford

Welford 575683



Happy Feet

Registered
Foot Care
Specialist



- Toe nail cut
- Corns
- Verrucas
- Ingrown toe nails
- Hard dry skin
- Fungal nails
- Hopi candle ear wax removal
- Holistic therapies

Home appointments
07842 266575

www.happyfeetmidlands.com

Allotment News—keep a look out!

During the night of the 15/16th November 2023, quite a lot of the sheds belonging to plot holders were broken into by smashing doors by person/s unknown, which has meant a lot of the doors and/or sheds have had to be repaired. All the sheds were on the field side of the allotments so most likely they came in from the field. Not all of the sheds had items stolen, some just had items thrown around the sheds on the ground. Some of them had nothing taken.

Obviously it is impossible to police the allotments so we ask that all plot holders do not keep valuable things in their sheds. Be aware of anything that looks suspicious on the allotments and let the secretary know.

We have put up a notice asking that the gate giving access to the allotments is always kept shut and especially when leaving in a vehicle.

William Lees

Secretary

Morleys Allotments Association

Donations

The Bugle is dependent upon the kind generosity of its donors and advertisers to cover the costs of producing the Bugle. In order to make best use of the donations received we recognise them here. The editorial committee would like to thank the following people for their donations to help keep the Bugle bugling:

- | | | | | |
|----------------|--------------|--------------|--------------|--------------|
| • A Bott | • P Morris | • T Eames | • Beeson | • D Reynolds |
| • A & B Barber | • C Miller | • Welford WI | • V Perkins | • Anon Sulby |
| • D Smith | • Goodfellow | • T Cutt | • G Phillips | • Deacon |

Please send any donations to Mr A. Parsons, 2 Northampton Road, NN6 6HP. Thank you

Christmas Boxes

Welford Guides would like to spread some festive cheer and are inviting residents to make up Christmas Boxes for them to distribute. These will be delivered to nominated members of the community in the week before Christmas.

How to make up a box:

- Take a lidded box and wrap the box and lid separately in festive paper
- Include a little anonymous message for the resident
- Fill the box with a selection of festive food items, ideally: mince pies, a small Christmas pudding, biscuits and crackers, jam and chutney (*please ensure all food items have a shelf life beyond Christmas and nothing that needs to be refrigerated please*)

Please get in touch if you would like to **nominate someone** who would benefit from receiving a box. We are hopeful that we will receive enough boxes to ensure all those nominated receive one - we're aiming to collect at least 25 boxes this year.

Boxes can be dropped off to a Guide meeting at the **Community Centre**, between **7.30 and 9pm** on the following dates:

Monday 4th December
Monday 11th December

Alternatively, please contact Niamh Bland
07837 579550 | niamhbland1985@gmail.com

Go on, show some community spirit this Christmas!



WELFORD FOOD BANK

On 10th November, we were treated to an amazing night of music from local talents - guitarist Charlie James and violinist Sharon Warnes. They very kindly offered to host a concert free of charge so we could raise some much-needed funds for Welford Food Bank. We were absolutely blown away by the generosity of all the 70+ people who attended the event - you have really reminded us what a special village we live in. Our thanks also go to Welford Parish Council for funding the hire of the WYCC for the evening.

Welford Food Bank is a no-questions-asked service designed for people who need emergency help. Given that we do not receive regular donations, we are unable to provide long-term assistance. If you need ongoing support, please contact a local food bank who are able to provide this kind of service. We are happy to signpost you to these services.

To use Welford Food Bank:
email welfordvolunteers@gmail.com
or call/text 07568082641

Please also contact us if you would like to find out how to support Welford Food Bank, either regularly or on an ad-hoc basis.

Poppy appeal 2023



Thank you so much to all who donated and all the local businesses who had collection boxes. To date I have banked **£1,557.55** and an extra £30 was donated using the QR code which was successfully trailed for the first time this year. This is an impressive amount in these hard times.

Thank you all.

Jan Edensor

Poppy appeal organiser

For many years now we have given a donation to charity instead of giving Christmas cards to people we will see over the festive season. We will be giving a donation to the same charity this year and would like to take this opportunity to wish everyone in Welford a very Happy Christmas and a healthy, safe New Year.
Ian and Sheila Elmes

RED ROSE HOME HELP



Offering a friendly and reliable help at home service in Welford & surrounding villages, including :

- Preparing meals
- Light housework, cleaning & laundry
- Assisting with dressing, washing & personal care
- Shopping, errands & social assistance
- Companionship
- Taking care of your pet/s
- DBS checked

Please contact Karen on
Tel: 077144 89218 /01858 575639
Email: kaslsmith64@outlook.com

FOCUS ON WELFORD BABES & TOTS



We meet every Friday morning at the Youth and Community Centre and offer friendly support (and lots of toys for our littlies) over a cuppa.

Please come and join us.

Open 9.30-11am Entry £2 per child and 50p for siblings. FB page Welford Babes and Tots

Guitar Lessons Available

Experienced, friendly, affordable teacher & composer offering guitar lessons in Welford.

Acoustic, Electric & Classical guitar, all genres and levels taught. Lessons are tailored to the individual and ideal for children and adults alike, beginners welcome.

(Compositions & performances recently featured on BBC Radio 3 & 4)

Please call Charlie **01858 575066**
or email Prelude42@hotmail.com

CharlieJamesGuitar.bandcamp.com



Charity Fundraiser Coffee, Tea & Cake Morning



10th February 2024 10am-Midday Billiard Room, Village Hall.

My daughter, Isobelle Moores is running the London Marathon for **Action on Pre-Eclampsia** in April 2024. She has a large fundraising target to meet and we do hope many of you will come and eat cake and drink tea and coffee on 10th February between 10am and midday in the Billiard Room (Village Hall) in help with her fundraising total. There will also be jigsaws and second hand books for sale...

Pre-eclampsia affects about 6% of pregnancies and severe pre-eclampsia can result in the breakdown of the placenta, stillbirth and/or in very rare cases, the death of the mother.

Isobelle would have grown up with an older brother, Joseph, who would be celebrating his 27th birthday the week before the marathon, but he was stillborn, due to complications related to pre-eclampsia.

I hope this isn't too much information to share but I just wanted to explain why Isobelle picked this particular charity to support. Many thanks, Pat Moores



Ann and Brian Barber would like to wish all in Welford a Very Merry Christmas and a Prosperous and Healthy New Year.



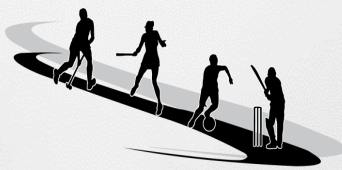
To all my friends and neighbours:



I will not be sending Christmas greetings cards this year, instead, I will be donating to my favoured charity. I wish you all a very Merry Christmas and a happy and healthy 2024



Audrey Bott



WELFORD SPORTS FIELD
ASSOCIATION

CHRISTMAS QUIZ

Saturday 9th December

WELFORD YOUTH & COMMUNITY CENTRE

Doors open 7pm, first question at 7:30pm

Teams of up to six are £7 per person to include supper

To book, please email

stu.chadwick@icloud.com or call Stuart on **07973 120816** confirming the captain's name and the size of team

Come and support the Sportsfield Association's fundraising at our annual Christmas Quiz.

All proceeds from the event will help us maintain the village's sporting facilities.

Green Welford

You are invited to...

A Christmassy Coffee Morning

FRIDAY 22ND DECEMBER
10 TO 12 AT THE VILLAGE HALL

We welcome everyone to come together as a community to kickstart the Christmas holidays. Come along to enjoy a hot drink and some homemade festive treats ♥

UNCHECKED IVY STRANGLES OUR TREE CANOPY

If you let ivy grow unchecked up your trees, it will harm the tree and its growth, and ultimately our tree canopy / leaf cover. It's important to stop ivy growing into the tree branches.

When ivy grows on a young tree, both are growing at about the same rate and the ivy does little harm to the tree. As a tree gets older, it grows more slowly, but the ivy continues at a pace, growing up the trunk and into the branches. This is the danger point. As the ivy grows along the branches, it starves the branches of light and the tree cannot grow twigs and leaves. The tree compensates by pushing the branches further and further out, in an effort to produce the same quantity of leaf cover. The branches become weaker and weaker as they push further and further out, and they become more and more vulnerable to snapping off. The tree eventually gives up and dies.

What's the best thing to do?

If you want to keep your tree safe, and also keep the ivy, it's a regular maintenance job, every 3-4 years:

- Cut the ivy back between October and February (well out of nesting season).
- Sever the ivy at head height (at least one metre / three feet below the fork where the first branch grows out).
- Leave the ivy to die. Remove it gently the following year when it is clearly dead. Pulling it off immediately will damage the bark and can also cause the tree to die eventually. If the ivy in the branches does not die, it means it's already got a foothold growing in the forks of the branches, and it's a much bigger job to remove the ivy and save the tree.
- It's a balancing act to keep your tree safe and preserve our leaf cover, as well as keep some ivy for birds and insects.



Hilary Hunt



LANDSCAPE &
PROPERTY SERVICES

PLEASE CONTACT THOMAS
FOR A NO OBLIGATION FREE QUOTE:
07525064220
twlandpservices@outlook.com
www.twlandpservices.com

Offering a wide range of Hard & Soft Landscaping:

Fencing & Repairs, Sleeper Work
Driveway Installation & Maintenance
Patio Installation & Maintenance
All Bespoke Decking
All Types of Timber Builds: Cabin, Shed, Stable, Pergola, Gazebo, Car Ports
& Garages
Drainage, Ponds & Water Features
Ground Work, Foundations and Concrete Works
Garden Maintaining & Clearance
Tree & Hedge Pruning
Turfing and Lawn Edgings
Household Repairs & Maintenance

Over 15 years of approved Professional, High quality work.

Open in
school



First
session

WELFORD BABES AND TOTS

Stay and play with your little one, meet other parents and carers, refreshments provided for you and your children, lots of fantastic toys. Expectant mums and newborns welcome!

Fridays, 9.30am – 11.00am

Welford Youth and Community Centre

£2.00

first



Welford Babes and Tots
Contact: Lucy on 07891287626
or Claire on 07837852364
or Helen on 07585669897

SPRINGFIELDS LOCAL VILLAGE SHOP, POST OFFICE & NEWSAGENTS

High Street, Welford
Groceries, Dairy, Fresh Meat,
Fruit & Veg, Wines & Spirits,
National Lottery,
Fresh Bread Daily

Tel 575666

SUPPORT YOUR LOCAL STORE

Love Quizzing?

Want to try a quiz with a difference and support Welford Pre-school at the same time?

JOIN US ON 2nd DECEMBER 7.30PM

In the WYCC

Interested? Call 07917 222376



Residential

keys
make every day epic

Recruiting now for Residential and Senior Residential Support Workers

Join one of our amazing homes and become part of the friendly team at Keys Group, where you can make a real difference to the lives of young people.

- ✓ Recruiting across Welford and Kettering
- ✓ Enhanced pay scales that recognise both qualifications and experience
- ✓ Fully funded training and qualifications
- ✓ Great employee benefits programme

Salary details:

Residential Support Workers:
from **£24,294 p/a**

Senior Support Workers:
from **£26,524 p/a**

Apply at
keys-group.co.uk/jobs
or call 0121 728 7800
(option 3) to talk to us

**WELFORD
GARAGE**

NORTHAMPTON ROAD
Tel: 01858 575396

Opening Hours

Monday-Friday 7.30am-7.00pm
Saturday 8.30am-6.00pm
Sunday 9.30am-5.00pm

PETROL, DIESEL, PARAFFIN, CALOR GAS

**Servicing, M.O.T. and repairs
Undertaken**

LICENCED AIR CONDITIONING
SERVICE AVAILABLE

MOTOR ACCESSORIES + PRE-PACKED

COAL, LOGS AND STICKS

**Eggs + Milk + Potatoes and
General Groceries**

CONFECTIONERY + SOFT DRINKS

FRESH ROLLS AND PASTIES

Selected & Seasoned Logs

Locally Sourced Mixed Hardwood

Delivered in Bulk Bags



For further information and prices,
call John on 07973802466





The Green Welford committee aims to champion our community's sustainable future. Below is a short summary of our latest endeavours and if you want to get involved, please email us: greenwelford@gmail.com

Important changes to our recycling bins: Unfortunately, Terracycle and Superdrug are no longer working together to recycle pill packets or medicine blister packs. This is incredibly frustrating as these were probably our most popular bins in the bus stop and on Newlands Road. Terracycle have also made some important changes to the Personal Care recycling scheme. From now on, we are only able to recycle make-up product packaging (e.g. eye shadow compacts, mascara tubes and wands, lipsticks, lip glosses and lip balms). Please do not drop off any hard plastic bottles (e.g. shower gel/shampoo bottles) or glass perfume/after shave bottles – these can simply go in the usual WNC blue-lidded household recycling bins.

AGM round-up We held our first ever AGM on 10th November, even welcoming a visitor from Yelvertoft. Outgoing Chair, Jules Bennett, thanked Bill Wright for getting the group off the ground back in September 2021, and thanked the wider committee for their commitment and passion for all things green. It has been an incredibly busy first two years, hosting two KidsFests, countless EcoFika coffee mornings, clothes swaps, mending events, film screenings and talks to name just a few. Our blossoming relationship with the village school is one of our biggest success stories and we look forward to seeing what the new School Eco Squad will achieve – after all, this future generation will experience the greatest changes due to climate breakdown and it is crucial they be more aware of how we can lessen and even avoid these impacts. We are in a strong financial position and have already started planning KidsFest2024, with the aim of making it bigger and better than ever before. The new committee Chair is Hannah Bedard, with Niamh Bland taking on the Secretary role and Ellen Worrell remaining Treasurer. They are supported by a further 8 committee members. Huge thanks to Jules for being our first ever Chair and guiding us so successfully as we all found our feet.

Insulation survey: There's still time to sign up if you'd like us to carry out a free home insulation survey using an infrared thermal imaging camera this winter. To register your interest, please complete the online form: bit.ly/GW_homesurvey



EcoFika coffee morning Every other Friday morning, we host a coffee morning in the Billiards Room at Welford Village Hall. We're open from 10am until 12pm, serving tea, coffee and a selection of homemade cakes. These coffee mornings are the perfect opportunity to come and spend a couple of hours with fellow villagers, and perhaps chat about various eco themes if you so wish. Upcoming dates are listed below:

- 12th & 26th January
- - 9th & 23rd February
- - 8th & 22nd March
- - 5th & 19th April

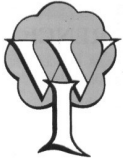
Our coffee morning coincides with a visit from Rita the Refill Van – bring along your empty containers to buy anything from pasta, herbs and flour to shampoo or even washing up liquid. You'll be amazed at what's carried on board!

JLR BESPOKE
PROPERTY RENOVATIONS



JLR Bespoke Property Renovations are an experienced and trusted Project Management and Construction team based in North Kilworth, Leicestershire.

If you have a project or idea in mind, please don't hesitate to contact us either by phone or via our website.
Tel: 07866 741261 (Jason Wright)
www.jlrbespokeproperties.com



WELFORD W.I. OCTOBER MEETING

The President, Denise Bott, welcomed 27 members and one guest and after the singing of Jerusalem, the September minutes were read and signed. The Nearly New Sale raised £177.53 for our charity and the table at the Northampton WI Craft Fair also raised 380.05. A small number of things were on sale and raised a further £27.00. The County AGM will be on the 26th October and Viv Journeaux is our delegate. The standing orders and Accounts were passed round and voted on successfully. The cakes for the Brownies coffee morning on the 21st October are to be delivered at 10.30. The first Coffee Club meeting will be at Louisa's Place on 23rd October with further meetings to be planned. Christine O'Reilly sent round the menus for an evening meal at Casa Nostra in Market Harborough on 29th November at 6.30. A card went round for soup, puddings and helpers for the Walk on 4th November. The December meeting is to be our Party Night and it was decided the catering will entail everyone bringing a sharing plate. Our speaker, Lesley Clark, a Style Adviser, then gave a lively and informative presentation about what we should be buying for our body shape and buying items that we could match with three other things, thereby keeping our wardrobes smaller and saving money. She was thanked by Sue Lees. Lovely refreshments were provided and served by Sue Brotherton, Val Morson, Lynne Sharpley and Michelle Wilson. The competition for a mirror, organised by Sue Lees was won by Jane Cottrell with Mary Crowther 2nd and Viv Journeaux 3rd. The raffle organised by Jean Baker was won by Hilary Attwood, Denise Bott and Pauline Matthew. Birthday flowers arranged by Jean Baker were given out and the meeting closed at 9.22 p.m. The November speaker is Julia Doherty on Walking for Mental Health and the competition is A Photo from a Walk. Everyone is welcome.



NOVEMBER MEETING

The President, Denise Bott, welcomed 31 members and 3 guests and after the singing of Jerusalem the October minutes were read and signed. The cakes for the Brownie's coffee morning on the 21st October were very gratefully received, the WI walk and lunch was a success even though the walk had to be postponed due to weather, games being played instead, and the first coffee club at Louisa's Place was enjoyed by all. Our nominated charity total now stands at £909.03. Several members attended the County AGM in Northampton and Viv Journeaux was our delegate. She gave an interesting report on the various items of business, competitions and the speaker Heather Jacks, a BBC Great British Sewing Bee winner. A range of clothes with the WI Logo on was launched and Denise Bott suggested we purchased some for when we are promoting the WI in the community. This was agreed. Menus went round for our evening meal at Casa Nostra at 6.30 on the 29th November. Anyone wanting to participate in the Christmas Toys on the Table to take direct to the stall in Market Harborough market. Our speaker, Julia Doherty, then gave a lively talk about the benefits of walking on our mental health, accompanied by pictures of various walking groups she has taken on long distance hikes. She was talking on behalf of a charity called Shout which provides a text service to young people with mental health issues. She was thanked by Julie Newman. Lovely refreshments were provided and served by Pauline Matthew, Ann Thorington and Pauline Underhill. The competition for A Photo from a Walk, organised by Mary Crowther, was won by Julie Newman, 2nd Sue Brotherton and 3rd Sue Wilson. The raffle organised by Sue Brotherton was won by Catherine Digby, Sue Walton and Val Jackson. The meeting closed at 9.20.



Gary Matthews
Traditional Mole Catcher,
Farm / Domestic.




Certificated
Moles/Rodents/Rabbits/Wasps.
Welford

01858575552



07787348951



JANET FRANCIS-FLORES Bsc (Hons)
Podiatrist/Chiropodist, HCPC Registered.
Home visiting service available.
26 years NHS experience.
Tel: 07792 408205 for appointments.





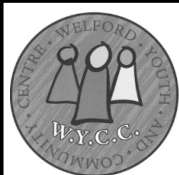
Welford Rainfall



KEY:	Highest monthly rainfall					Lowest monthly rainfall					* Up to 21st	
	2013	2014	2015	2016	2017	2018	2019	2020	2021	2022	2023	
Jan	58.0	119.0	59.5	81.0	59.0	68.0	26.0	51.5	117.5	20.5	49.2	
Feb	42.0	74.0	41.0	43.0	59.5	29.0	31.0	121.0	47.0	89.0	7.0	
Mar	62.0	43.5	27.0	78.5	54.0	166.5	55.5	35.5	46.0	41.5	115.5	
Apr	22.5	31.0	25.5	50.0	10.5	65.0	15.0	35.0	9.0	23.5	56.0	
May	75.5	109.0	54.0	45.0	80.0	85.0	46.5	10.0	141.0	51.0	37.0	
Jun	41.5	69.0	26.0	77.5	52.0	1.0	148.5	66.0	43.5	34.5	44.0	
Jul	92.0	31.0	81.5	19.0	71.0	14.5	125.0	63.0	59.5	5.0	92.5	
Aug	51.0	95.5	53.0	56.0	78.5	52.5	79.0	140.0	40.0	22.0	39.2	
Sep	26.0	8.0	50.5	45.0	79.0	36.0	89.0	28.5	50.0	52.0	69.5	
Oct	113.0	73.0	60.0	35.0	21.5	46.0	153.0	153.0	84.0	119.2	115.2	
Nov	39.5	82.0	65.0	79.5	44.0	40.5	132.0	62.0	42.0	114.7	57.5*	
Dec	51.5	54.0	75.0	24.0	100.5	67.5	100.0	139.0	81.0	48.7		
Total Rainfall (for year)	674.5	789.0	618.0	633.5	709.5	671.5	1000.5	904.5	760.5	621.6	682.6	

October maintained the pattern as the wettest month of the year on average but not exceptionally so. The whole of 2023 is turning out to be an average year overall, very much in line with the long term data from the 22 years of records. Taken together, the last two years have been slightly drier than average but the previous three years (2019-2021) were unusually wet.

Stuart Chadwick



The Welford Youth and Community Centre is available to hire. Located on Welford Playing Field at the heart of the village it is a perfect venue for groups to hire and for any type of family gathering. Recent bookings have included **Birthday parties, Wedding receptions, Dance practices and Presentation evenings.**

The comprehensive facilities include a modern kitchen that has just been refitted. It has a cooker and dishwasher, toilets including a disabled toilet, baby changing facilities and a separate meeting room. All of this at a very reasonable hourly rate.

Presently available: Daytimes – Monday, Tuesday pm, Wednesday pm, Thursday (except 3rd Thursday of month), Friday pm and Weekends.

Evenings – Saturday. During school holidays Friday to Monday evenings are available to hire.

For booking enquiries email WYCCbookings@Gmail.com, or phone Bill on 01858 575795.

The AGM for the Welford Youth and Community Centre will take place on Thursday 12th October at 20:15 in the WYCC Building and anyone is welcome to attend.

Professional hair styling in lovely home salon based between Welford & Sulby

hair by **J**ulie

framesi WELLA

Call Julie Bentham on:
Tel: 01858 575675
Mobile: 07891 426055

FREELANCE HAIRDRESSERS' ASSOCIATION **FHA**

Welford Hog Roast

by Dave and Sue Cliffe

- Slow spit roasted hog served with stuffing and apple sauce in a roll
- Catering for weddings, parties and all occasions
- Cooked and served in front of up to 120 guests by experienced hog roast chefs
- Top quality local pork sourced from Joseph Morris Butchers



email: david.cliffe32@gmail.com
Tel: 01858 575362 Mob: 07850 585822

English Boost Tuition KS3 & GCSE

- Boost your confidence
- Boost your progress
- Boost your exam results



— **For Bookings and Enquiries** —

Phone: 01858 575794 / 07974 778861

Email: englishboost9@gmail.com

Facebook: @englishboosttuition

Stefan and Raymund the Handymen

Quality Woodwork, Plastering, Decorating, Tiling, Brickwork, Fencing, Patios, Decking, Guttering, Flat-pack assembly, General repairs and more...
Not sure it's a job for the Handymen? Just pick up the phone, and ask!

01858 881775

StefantheHandyman@outlook.com

RaymundtheHandyman@outlook.com

Find them on Facebook: @StefantheHandyman @RaymundtheHandyman



Daventry Area
Community
Transport

"DACT" provides transport for medical appointments throughout Northamptonshire and just into neighbouring counties.

We are looking for more volunteer drivers in the Welford area. If you feel you could help, please contact Phil on 01327 701665 and he will be delighted to tell you more about helping people get to their medical appointments.

I have been driving local people for over 4 years now and it is a rewarding job, meeting and chatting to lots of people who are grateful for your help. Please help if you can.



Jon Smurthwaite Bookkeeping

Providing flexible, friendly & professional bookkeeping and accounting services to local people and businesses.

Tel: 07887 585217 / 01858 575842

E-mail: info@jonsbookkeeping.co.uk

Website: www.jonsbookkeeping.co.uk

Jonathan Smurthwaite FCA
43, The Leys, Welford, Northamptonshire, NN6 6HS



Join Welford Cub Scouts!

Experience new and exciting activities, whilst learning important life-skills, helping the community and making new friends! Anyone aged 8-11 is welcome!

Contact Stu (07540053712) or Issy (07775451148) for more details!



Where? Welford Youth & Community Centre
When? Friday 6-7:25
(term time only)

Painter & Decorator

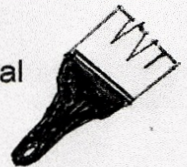
Adam Farmer

Local Qualified Professional
Reliable and trustworthy
Reasonable rates
Quality materials

For free quotation: Call or e-mail

Adam on 07938739205

adamfarmer86@live.com



THE WHARF INN
WELFORD ~ 01858 575075
www.wharfinnwelford.co.uk

Christmas Party Menu 2023 Now Ready
Available to book from 1st December 2023

Please view on our website
www.wharfinnwelford.co.uk
or enquire at The Wharf on 01858575075



ANNOUNCEMENT

WE ARE PROUD TO ANNOUNCE
THAT WE HAVE BEEN VOTED
CAMRA RURAL NORTHAMPTONSHIRE
PUB OF THE YEAR 2023
(FOLLOWING 2017 LAST AWARDED)

Also, our 5* score for our kitchen
from environmental health

Nature Notes

There's definitely a touch of winter in the air as I write. Woolly hats and gloves and scarves have come out and we are all walking more briskly in the wind. The leaves have been reluctant to fall, and there have been some spectacular colours, but gradually the skeleton trees are allowing the landscape to open up allowing longer views. Even on gloomy days the oak and beech trees glow bronze. Holly berries are spectacularly red and the haws in the back hedge shine red as the sunrise catches them - and soon the fieldfares will be swooping along enjoying the banquet where the hedge trimmers have left them to grow. The garden birds are enjoying some ivy I have allowed to thrive especially for them.

The rams have been busy making sure there will be lambs in the spring, and the sheep and cattle will soon be taken indoors to be cared for and to give the grassland a rest both from the hooves in the mud and the munching mouths. It always seems strange seeing the fields empty. The sheep have a morning routine, which has got later and later to coincide with sunrise, but every morning we watch them come from the high, well drained part of the land where they sleep, cross the big field on the same tracks and visit each small paddock in turn. We shall miss them until they come back with their lambs.

The days are ever shorter as we count down to the shortest day. The 21st December is a day of celebration on my calendar as after that, almost imperceptibly, the light grows stronger day by day, even though we usually have the coldest time to come. There are lots of Christmas events to cheer us, and decorations and festive lights to enjoy as we walk round the village, and by the next Bugle spring will be just around the corner.

Susie Bevin



Christmas Stamps for Bone Cancer

Please save the stamps from all your Christmas - and other - post and let Susie Bevin have them at 5, West End to send to raise money for Bone Cancer. Please cut them with a margin of about a centimetre.

Thank you

FINANCIAL & MORTGAGE ADVICE

I OFFER A FREE INITIAL CONSULTATION TO SEE IF I CAN HELP WITH;

- A MORTGAGE OR A REMORTGAGE
- EQUITY RELEASE
- PENSIONS (INCLUDING SHARING ORDERS)
- FLEXIBLE DRAWDOWN & ANNUITIES
- LIFE, CRITICAL ILLNESS, & INCOME PROTECTION INSURANCE
- INVESTMENTS INCLUDING ISAs
- COMPANY DIRECTORS INSURANCES

Tom McCullagh

Independent Financial Adviser

Tel-**07880963016**

tom.mccullagh@arcuswealth.co.uk

Visit our website -

<https://arcuswealth.co.uk/team-members/tom-mccullagh/>

Arcus Wealth is a trading name of Corbel Partners Limited which is authorised and regulated by the Financial Conduct Authority.



THE DOG HOUSE Boutique & Spa

1 The Courtyard, Hemploe Road, Welford NN6 6HF

- ✦ All aspects of dog grooming undertaken
- ✦ One to one appointments
- ✦ Rural & relaxing environment
- ✦ All natural products used
- ✦ Fully qualified & insured
- ✦ Collection & delivery service available
- ✦ Competitive pricing & customer loyalty scheme

For more information,
or to book an appointment

Please call or text Sarah
on 07495 385922

BELL RINGING PRACTICE :



1st. and 3rd. Monday each month,
7.30pm. to 9.00pm.

New ringers always welcome.

Bliss & Beauty specialise in skin treatments, but we offer all your usual beauty treatments in our quiet, peaceful barn. With free parking outside the door, and excellent safety measures in place, we maintain a safe environment without compromising on your experience. Head over to our website where you can see some of the measures we've implemented, as well as some of our excellent reviews.

www.blissandbeauty.co.uk

01858 571244 | 07773 235433 | info@blissandbeauty.co.uk | www.blissandbeauty.co.uk
Bliss & Beauty, Dog Lane, South Kilworth, Leicestershire, LE17 6DY

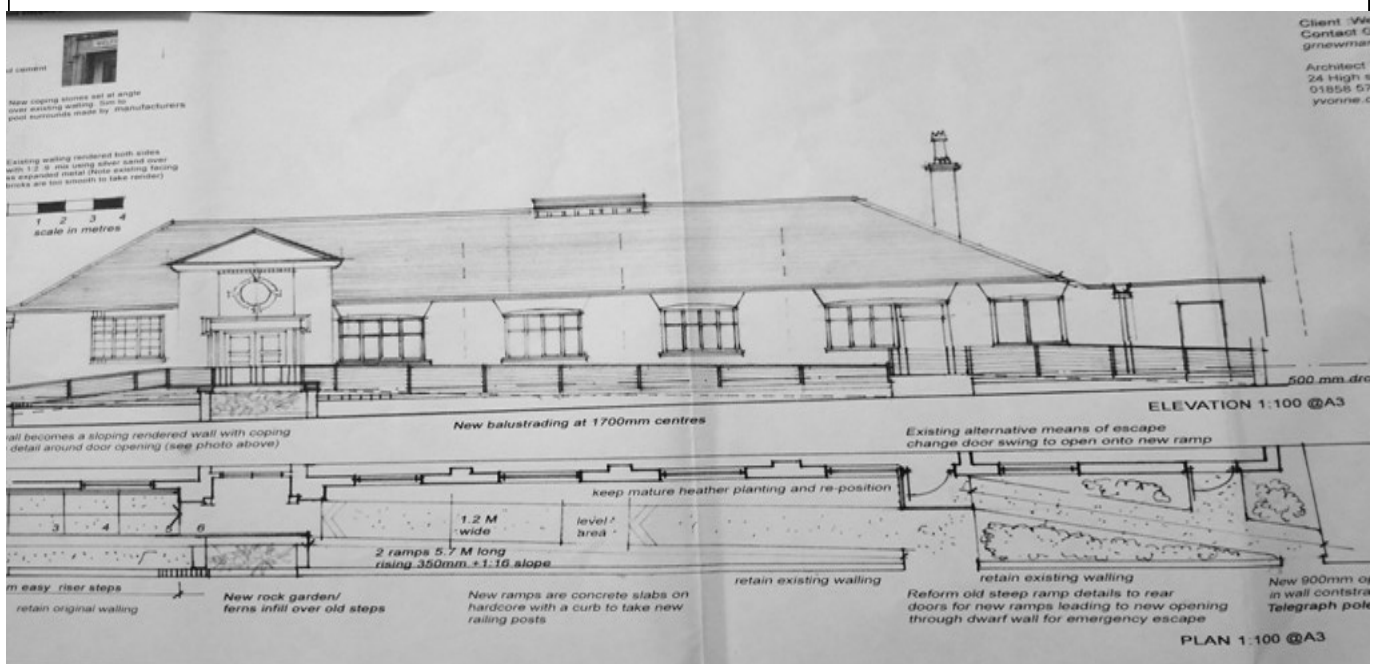
"Like" us on Facebook to keep up to date with our latest news and offers.



WELFORD VILLAGE HALL ACCESSIBILITY IMPROVEMENTS

The Village Hall Committee has commissioned improvements to the accessibility of the Village Hall. Thanks to the grants obtained because of lockdown and the careful management of finances, there are sufficient funds available to change, for the better, access to the Village Hall. We have been advised that the steps up from the street are posing significant potential hazards of slips, trips, and falls, and that the existing slope is not fit for purpose as a ramp for people using wheelchairs and other mobility aids. The improvements will be a longer ramp with a much reduce slope that will go from the current emergency exit at the right-hand end of the building, through what is currently a garden area, along to the front door. The existing steps will be removed but the current ramp will be left in place and will continue to provide access directly from the car park for the more able bodied. Those who find the slope too steep will be able to walk up West Street and gain access to the hall by way of the new ramp. Work is scheduled to commence towards the end of January. Inevitably, the work will cause some disruption along West Street. The local contactor, STJ (Northants) Ltd., will do all he can to minimise the problem but there may be occasions when there are deliveries, particularly concrete, when the road will be blocked for a time. We have planned to keep the disruption minimal for all our regular users and the public and hope that all will appreciate the improvements to a well-used and popular village amenity.

Geoff Newman, Chairman WWHMC



Eulogy for John Wilford 5th September 2023

John always called Maureen, Mo and she has written this eulogy because she wants it to be a tribute to a wonderful husband, father, grandfather, colleague and friend.

John was born on 3rd December 1948 in Welford, the third child of John Henry, known as "Jack" and "Gladys". John had a good childhood, he was happy at primary school and spent his time out of school with his three friends, Keith, Tony and another John. They had a great time in each other's company. John passed the eleven plus and went to Market Harborough Grammar School a year early. He was always in the top group for his age group and did very well in languages. He excelled as cross country running and was a champion many times. However, he was not happy at the Grammar School. When he was approaching his O levels and unbeknown to his parents he left school and got into Kettering College. Every day he left home in his uniform, changed in the bus station and travelled to Kettering. He left the college with 8 O Levels and an HND in mechanical engineering.

He quickly joined JCB on the spanners and was travelling up and down the country night and day repairing JCB machines. One day Joe Bamford himself took him off the spanners to begin his career in selling.

In the 1970's John had a young family. By then he was working for Orenstein and Koppel, a German company in England. Most of his time we was working in developing countries like Morocco and Libya. He said every project started with one of his machines. He didn't like working away but returned home as much as possible. Some of the stories he told were amusing but one was serious. In 1979 the Ayatollah took over Iran, John was there and as all foreigners were treated as enemies he had to be kept hidden in a customer's flat for three months. He was finally smuggled to safety in the boot of a car. John continued to work at O & K during the 1980s.

John and Mo met in the Autumn of 1985 at the Cock in Arnesby. At the New Year party John gave Mo his phone number so she could call him to arrange a date. Every Friday after that he reminded her about phoning. Finally, in February he said "If you don't phone tomorrow the deal is off!" Just like he told dithering customers. Of course she phoned and the rest is history. They bought the house in Welford and moved in on the 30th June 1986. They married in 1987 and Mo has said their 36 years together have been the happiest of her life.

In 1989 they started a business doing what John was good at, buying and selling machinery. The business was successful and again John was travelling a great deal. One journey to Columbia was so dangerous he had an armed guard with him at all times. Mo was relieved when he returned.

O & K approached John to return to them as MD. John agreed and O & K bought his business from him. Not only did he succeed on making the company saleable he also made the staff a happy unit again, during this time he showed how compassionate he was. A hard working, loyal member of staff had a car accident, no injuries, just a broken roadside

SimplyBePilates



Beginners Wednesday 10am
Intermediate Tuesday
9.30am (full) 6pm (full) &
7.15pm
Welford Youth Centre

Private sessions at local
cabin
Cancer Rehab offered at reduced
rates (CanRehab Level 4 qualified)

Contact Anne: 07738119606
anne@simplybepilates.co.uk



 **Kilworth Springs**
PREMIER GOLF CLUB

Open to the Public
Golf Course, Driving Range, Tuition
Bar & Restaurant - Open All Day
Event & Conference Facilities

T: 01858 575 082
E: admin@kilworthsprings.co.uk
 W: www.kilworthsprings.co.uk 

THANK YOU

TO ALL WHO VISITED THE
TREES FOR WELFORD
EVENT RECENTLY

We now have over 70 thoughtful and insightful feedback forms to evaluate.

Your comments are really helpful in shaping this important project.



electricity box. He was desperate to reach his wife in hospital and had forgotten his insulin resulting in an episode. Next day he faced John expecting dismissal, instead John had booked a holiday in Devon for them both for when his wife recovered.

John left O & K and retired, he and Mo added to the properties they owned and entered the rental business. They did their best to look after their tenants and John enjoyed fitting new kitchens and bathrooms. In the early 2000s John and Mo were delighted to become Grandparents twice, first to Daniel, then Rebecca. They both enjoyed watching them grow into fantastic young people and followed their sporting activities, swimming and hockey.

John and Mo sold the properties and were looking forward to retirement and trips to Spain. During the Pandemic John became a keen gardener, but there was another side to John and that was poetry. He actually wrote over 100 five verse poems covering everything from panic buying to praise for the NHS and Boris Johnson and he certainly kept his friends and neighbours amused.

To finish. John and I met in the snow of 1986 on the Bosworth to Welford Road. John persuaded me to drive home, we found that we lived opposite each other and have been good friends ever since. Martin.

Thank you—from Maureen Wilford

I would like to say thank you to everybody, family, friends and neighbours who have supported me during this very difficult time and continue to do so.

I would also like to say thank you to everybody who joined us in the church to say goodbye to John. Many people travelled a long way to be with us.

Finally, a hand written letter from the Air Ambulance told me that in lieu of flowers, the donations came to £1,201.50

Thank you to everybody who donated in memory of John. In the words of the Air Ambulance, "A lovely tribute to him and speaks volumes about how much he was loved by family, friend and the wider community.



ACAP LTD

ACCOUNTS • BOOKKEEPING • PAYROLL

High Quality, Professional Accounting Services



PAYROLL BUREAU



BUSINESS START UPS



TAX REFUNDS

WE CAN HELP YOU WITH ALL ASPECTS OF YOUR BUSINESS

We offer fixed fee modern accountancy services designed around your business needs. If you want to save time and money, call us today.

Call or Text • 07810 393 853

info@acapltd.co.uk acapltd.co.uk

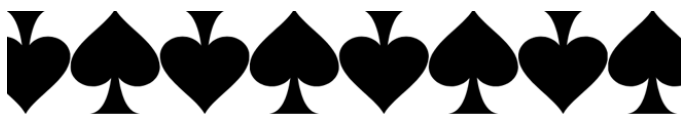
Chestnut Cottage,
Elkington Road, Welford
Northamptonshire, NN6 6HE

Treasure Island

Yo Ho Ho and a bottle of rum! This WADS production certainly got the audience and the participants into the Christmas spirit. It had all the elements of the original story with the addition of a traditional pantomime framework, including Matt Yates setting the mood as an excellently spirited Dame, landlady of the Admiral Benbow, and the show opens with the regulars played by Tritsan Sheldrick, Sam MacDonald, Aiva Geraghty, Isobel Smurthwaite, Verity Finch, Nancy Commons, Freya Lane, Leo Bland, Molly Frost, Willow Green and Francesca Yates, all enjoying a pint and raising their mugs and singing as Ben MacDonald as Billy Bones sat staring into space. All the youngsters established individual characters and added greatly to the fun. We then meet the Squire, Alistair Dunn, who has a great partiality for spotted dick and custard, the mention of which always brings him to approve a suggestion. The Dame's son, Jim Hawkins played by Tom Whorton meets the Squires's daughter Jenny played by Lydia Finch, and love in true pantomime fashion, is instant. Chris Sheldrick plays a villainous Long John Silver - with Hilary Whorton as his long suffering parrot, which never did get to sit on his shoulder. Bob Finch is his long-suffering right hand man and Silver's henchmen were Eddie Martin and Lizzie Kilham, who rejoiced in the names Blood Boiler and Gizzard Slitter and who struggled to carry out all his evil schemes. The plan was to find the map of the treasure, which is found after various twists of the plot, and a crew needs to be found for the Squire's ship to sail to the Caribbean and find the spot marked by X. In the absence of any sailors the members of the Smugglers Cove Women's Institute are recruited, leading to much hilarity under the leadership of their president, Mike Tanser, who gave a superb and convincing performance in his wig and Dame Edna Glasses. The individual members of the WI, Elizabeth Bates, Georgia Bennett, Cherry Whiskin, River Keaney, Kaelyn Cowe, Denise Bott and Sian Bates quickly established their own entertaining characters. Needless to say, the treasure was found, nobody walked the plank and the young couple were married as a finale.

Of course, those on stage are only part of the team. Bob Finch as Director and Chris Brown and Rebecca Barraclough as producers deserve great credit, as does Phil McMurty for the music, and the set designers, costume, lighting and sound, singing coach and hair and make up. We all very much enjoyed sitting at our little tables and entering into the spirit of a very entertaining evening. Thank you all.

Susie Bevin



WSSSES SCHOOL ASSOCIATION PRESENTS



CASINO ROYALE

A BOND THEMED CASINO NIGHT
PROFESSIONAL CROUPIERS | COCKTAILS | CANAPÉS
7.30PM | SATURDAY 2ND MARCH
WELFORD YOUTH AND COMMUNITY CENTRE
DRESS CODE: DRESS TO IMPRESS

Early bird ticket offer: **£20 per person** to include welcome drink, canapés & initial playing chips. Extra chips can be bought on the night and the winner is the one with the most chips at the end. Fantastic raffle prizes on offer, including an overnight stay!

After 16th February tickets increase to £25.

FOR TICKETS, PLEASE EMAIL: WSSSES_PTA@OUTLOOK.COM



St. Nicholas' Church, South Kilworth

Presents

A Wonderful Evening of Entertainment

With

The South Leicestershire

Salvation Army Brass Band



FRIDAY 8TH DECEMBER 2023
@ 7.30pm

For many, the sound of Christmas often conjures up memories of town squares, cold streets, winds blowing, and, whatever the weather, the wonderful warming sound of a Salvation Army Brass Band, with Trumpets and Trombones echoing in the air. South Kilworth's PCC are therefore so pleased to welcome the South Leicestershire Salvation Army Band to play a festive programme in the sheltering interior of St. Nicholas' Church.

It promises to be an evening of warmth and nostalgia, the sounds of Brass rising to the rafters, and suitably accompanied with a mince pie and glass of wine ...an ideal start to the Christmas period.

Perfect!

Tickets £10pp (inc: mince pie and a glass of wine, supplied with the generous support of the Lutterworth Branch of the Hinckley & Rugby Building Society)



To reserve your tickets, please contact Colin on 07711 054622
Email: colinjerrick@btinternet.com

HOCKEY is your sport!

Our large and successful club is welcoming new players every week!

KS1 train on a Sunday, 9-10 at Naseby Playing Fields

KS2 and secondary age train on a Wednesday, 7-8, at Lutterworth College

16+ & adults also train on a Wednesday, 8-9, at Lutterworth College



www.welfordmixedhockeyclub.co.uk

Looking for more in 2024?

WHY NOT TAKE UP BOXING?

GOOD FOR THE BODY

Learn proper techniques using gloves and pads, guided by a friendly and highly experienced coach.

GOOD FOR THE MIND

The concentration required to put the techniques into a routine is great for improving focus and mental clarity.

KEY INFORMATION

- Sessions on Thursdays in Lutterworth from 11 to 12
- Lifts shared, leaving Welford at 10.30am
- Women only

WHERE DO I SIGN UP?

To find out more or to arrange a taster session, please get in touch with either Niamh or Pat:

niamhbland1985@gmail.com

patepatmoores.co.uk



ACCA Qualified Chartered Accountants

Providing professional services covering a range of areas

Book – keeping

Accounts

Payroll

Construction Industry Scheme

VAT

Limited Company Formations

Capital Gains Tax

Self-Assessment & Partnership Returns

Business consultancy & advisory

Telephone: 01858 571197

Email: info@beagleaccounting.co.uk

Website: www.beagleaccounting.co.uk

23a High Street, Welford, Northamptonshire,
NN6 6HT



Elizabethan

At the Heart of Welford

Village Pub & Venue

Bar - Room Hire - Functions

Open Every Day from 5pm*

(Other times by arrangement)

*Closed First Monday & Tuesday of Every Month

Live Music - Friday 8th & Sunday 31st December

Pete Shaw & Sub performing as Acoustic Duo

DANGERFOX

Christmas Opening Times

Christmas Day – Closed

All other days normal hours

The Elizabethan, High Street
Welford, NN6 6HT Tel: 01858 57 1100



TRIBE MASSAGE

Inspiring Healthspan

Do you want to **LIVE** a **LONGER** and **HEALTHIER** life?

By creating a bespoke plan we can energise your **HEALTH** so that you can live life to the fullest **WITHOUT** disease, injuries, and pain holding you back.

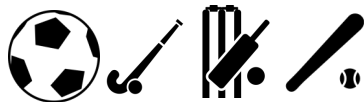
- ❖ Nutrition Coaching
- ❖ Massage Therapy
- ❖ Sports & Rehab Therapy
- ❖ BEMER Physical Therapy
- ❖ Posture Analysis

Go from exhausted to energised and add life to your years with **TRIBE**.

Tel: 07400 112510

Email: info@tribemassage.com

Website: www.tribemassage.com



WELFORD WORLD OF SPORT...

UPDATES FROM THE SPORTS FIELD ASSOCIATION AND MEMBER CLUBS



(C)HUNKS OF WVFC BARE ALL FOR CHARITY

After a year off, we're again baring all for charity with a 2024 "(c)hunks of Welford Victoria" calendar about to enter production. As you might imagine, our models are again complaining that the photos are being taken when it's cold!

We are raising money for PSC-SUPPORT UK because a member of our WVFC family has PSC. PSC Support is a charity for Primary sclerosing cholangitis (PSC). PSC is an immune-mediated liver disease of the bile ducts with no medical treatment or cure. It is unknown what causes PSC and it is referred to as 'the last black box in hepatology' because there is so much we don't yet understand about this complex condition, despite impressive research progress in the last decade.

Production of the calendars has been kindly sponsored by Myriad Associates, meaning 100% of the money you pay will go to PSC-SUPPORT UK.

welfordvictoria.com/charitycalendar2024

(The calendar photos are top secret and this is a family publication, so instead here are some of our Veterans getting clattered... enjoy!)
Photos ©JLGFotography



42 High Street
Welford
01858 571104
07879 991311

info@greensck.co.uk www.greensck.co.uk

Our Services

Outside Catering for Parties, Small Weddings, Christenings, Funerals and Corporate Lunches

~

Afternoon Teas & Buffets
Served in our Tearoom
Supplied in Gift & Picnic Boxes

~

Weekly Cook & Collect Ready Meals
Orders by Monday for Collection or Delivery on Wednesday

THE POWER OF TWO!

Over the course of a year, our photographer Joanna captures loads of wonderful images, but none sums up our season so far more than this shot of George Jeffery and Michael Hart, manager and assistant of our Northamptonshire team



Taken in October, it shows **two** guys celebrating **two** wins on the bounce for their team... the first **two** wins for that team since it was formed **two** years ago... on a weekend where **two** WVFC adult teams each recorded a win (the second week in **two** that had happened). It was snapped just after Michael's 18 year-old son, Tyler, scored his first goal of the season

Welford Victoria (Leicestershire)
Leicestershire County Football League
Division 1

1st place P9 W7 D0 L2



After an unbeaten season last year, our invincibles were promoted two divisions into League 1. After losing their first two matches, we wondered if perhaps that might have proved a mistake but we were wrong to doubt – even for a fraction of a second – the resilience of Jordan Drew and his crew. At the time of writing, they have gone 7 games unbeaten and now sit top of League 1 by 4 points.

Welford Victoria (Northamptonshire)
Northamptonshire Combination
Division 3

5th place P12 W6 D0 L6



After a season without a win, or a point that didn't get expunged because the opposition team later folded – George Jeffery and his associates have hit a rich vein of form, winning 6 of the last 7 league games and scoring 36 goals in the process. A mark of the progress made is that they defeated Crick Athletic Reserves 6-3 last weekend, having lost to them 14-0 on the last game of last season.

Welford Victoria (Veterans)
Northamptonshire Sunday Combination
Veterans League B

6th place P4 W1 D0 L3



Managerial upheaval perhaps derailed the start of the season for our Veterans, as it took them until last week to record their first win (a 4-2 success away at West Had-don). Interim manager Simon Cummins has started to make his mark on the team though, which is our way of saying that now he picks the team, the others have no choice but to listen to him.



2024 SEASON

With the committee now in place, planning for the 2024 season is well underway and we're delighted to be able to share some of those plans with you now.:

SENIOR CRICKET

Adults & 16+ (with existing junior cricket experience)

We plan to play 8/9 Sunday afternoon friendly matches (home and away) from early May through to early September against other local teams. A full fixture list will be published once agreed in the New Year. Open to both Men and Women.

JUNIOR 'HARDBALL' CRICKET

U11s & U13s

Coaching sessions are planned at various stages during the season but what we can do and how often they will take place will be driven by the level of interest from local boys and girls. If there is sufficient interest, we will look at arranging matches for them against local opposition.

ECB ALLSTARS ages 5 to 8 and DYNAMOS ages 8 to 11 Softball Programme

Our highly successful joint programme with Yelvertoft CC saw a record number of 39 children taking part in 2023. The plan is to run both programmes again from early May to the end of July on Saturday mornings at Yelvertoft Playing Fields. Full details will be published in February.

INDOOR PRACTICE NETS

February & March 2024

We are looking at arranging 5/6 sessions (probably on a Monday Evening at Guilsborough Academy Sports Hall) which would be open to all senior/16+ players with some sessions also open to U11/U13 hardball junior players.

Rounders end of season awards

Fantastic night on the 10th November in the newly refurbished Sport Field Pavilion. Celebrating the first season in Division one for Pam's People. Well deserved awards went to Annabell Fallon for Most Improved Player and Kate Litchfield for Player's Player. Next season here we come!

JJ's Kiddycare



- Funded pre-school sessions for 2,3 & 4 year olds
- Full day care for 0-5 years, Mon-Thurs
- Situated on a farm site between South Kilworth and Welford
- After school clubs (4-14 years)
- Holiday Clubs during all Leics and Northants hols

www.jjs-kiddycare.co.uk. Tel. 01858 575642
admin@jjs-kiddycare.co.uk

SAM COLLINS MAINTENANCE

Handyman specialising in Carpentry and Joinery



07933 573444



Welford, Northamptonshire



@scollinsmaintenance



samcollinsmaintenance@outlook.com

To register interest or for any further information on any of our initiatives for the 2024 season please contact:

- Robin (Bennetrobinb@aol.com) **07774 839299**
- Chris (chris_sheldrick@hotmail.com) **07869 294032**

GOODBYE, HELLO

Finally, huge thanks to Adrian Scullion, who has been a member of Welford Cricket Club for longer than he probably cares to remember, but has now taken the decision to stand down. Without his contribution over the years as a player, captain, committee member, tour organiser, groundsman, barman and latterly as Vice-Chairman, the club would not still be operating today.

This means we extend a warm welcome to Martin Howells who has stepped up to become Vice-Chairman and George Rhatigan who has joined the Committee for the 2024 season, which we hope will be successful and enjoyable for all.



At Hannah Collins Beauty Therapy we want to cater to your specific needs. Whether you're after an Eyebrow Shape or a Skin Transformation program you will be treated with the utmost care.

Located at Welford Wharf you can take the time out to relax in our peaceful beauty rooms.

O.P.I

delilah
sienna

www.hcbeautytherapy.co.uk
@hcbeautytherapy
01858575152
07736939993
Wharf Barns, Welford
NN66JQ

KATHERINE DANIELS



THE SEASON SO FAR

We are nearly half way through the season and are going great guns. The Mixed team are unbeaten and sitting in 3rd place in Div 2. The Badgers are on a current running streak and playing some incredible hockey. The junior section is huge and are showing some of the Badgers that they may be fighting for their places next season! We are having new players turn up every week and there is a great sense of camaraderie and a real desire to train hard which is making coaching a great pleasure.

Our Christmas do is a Bingo night that has been kindly arranged by a group of parents. We have had some very generous sponsorship offers and the proceeds of the Bingo night will go towards a new Badgers kit.

If Hockey is something you'd like to try, or like to get back into, please use the contact details on the next page and we will find a session that suits you!



HIRE THE CLUBHOUSE

Our recently-refurbished clubhouse is great for events, parties or meetings of about 20 –30 people, whether outdoor space is required or not. Facilities include:

- Large HDTV with HDMI/USD/wireless connectivity
- High-speed WiFi
- Natural daylight
- Comfortable seating and flexible table layout
- Licensed bar
- Small kitchen also available

Email james.e.bland@gmail.com Call **07772 605303**

One of our biggest fundraisers is our 100 Club, where for just £5 per month you get 10 chances to win £100 or £50 and two chances to win £300 or £150 over the course of 12 months. Entry to the club is open every July and January, so we are accepting new members for the New Year now. The funds from the 100 Club help us keep the facility in good working order and available, so every member's contribution is hugely appreciated.

Please email 100clubwsfa@gmail.com



WELFORD SPORTS FIELD ASSOCIATION

JOIN OUR CLUBS

HOCKEY

Training (from September 2023)

KS1: Sunday 09:00 -10:00
@ Naseby Playing Fields

KS2 & Secondary:
Wednesday, 19.00-20.00
@ Lutterworth Academy

16+ & Adults: Wednesday,
20:00-21.00
@ Lutterworth Academy

welfordmhc@hotmail.com
welfordmixedhockeyclub.co.uk
IG: @welfordmixedhockeyclub

ROUNDERS

The ladies Rounders team's season runs from April to August inclusive, with matches or training typically on Monday, Tuesday or Wednesday evenings

EllieScullion@outlook.com

FOOTBALL

Welford Victoria Football Club's season runs from August to May but training is all year round on Tuesday, Wednesday or Thursday evenings. Junior teams play Saturday morning, adult teams play Saturday afternoons and Veterans (35+) play Sunday mornings

info@welfordvictoria.com
welfordvictoria.com/join-us

CRICKET

Seniors play from April to September, with matches on a Sunday and net practice on Friday evening. Other sessions outlined on previous page

Bennettrobinb@aol.com
07774 839299

100 CLUB DRAWS thanks to all members for their continuing support

October

£150 Sheila Scullion (2)

£50 Sasha Phillips (21)



Leebrook Property Services

Maintenance | Renovation | Repair

Steve Leebrook
07901 902 741
01858 683 103
hello@leebrookps.com

For all Handyman jobs

- Carpentry
- Doors & Windows
- Loft Ladders & Boarding
- Painting and Decorating
- Plastering
- Tiling
- Kitchen & Bathroom Renovation
- Appliance Repair & Installation
- Landscaping
- Decking
- Fencing
- Paving
- Roofing
- Outdoor Maintenance

Find and follow us on



F & W Plumbing & Heating Services Ltd

North Kilworth, Lutterworth, LE17 6HX

Bespoke Bathroom & Kitchen Design & Installation.

Over 30 years experience in Designing and Installing Contemporary to Traditional Kitchens and Bathrooms.

Plumbing | Joinery | Plastering | Electrical | Decoration | Floor & Wall Tiling

Gas Safe Reg. No 75883 | Hot & Cold Water System Upgrades | Boiler System Upgrades

Call Jason for Free Quotations | Ideas & Inspiration on 07866 741261.

Email: jayspanner@btinternet.com

Professional | Committed | Competitive | All Work Guaranteed

Golf: The Masters

The Welford Masters 2023

This golfing extravaganza will take place (weather permitting) on FRIDAY 29th DECEMBER at Cold Ashby Golf Centre. Tee times booked from 9.58 am so please call John Nicholas on 01858 575422 or email

john.nick@btopenworld.com to book your place.

Costs are £7 if you are a Cold Ashby member or £27 if you are a guest. There are only 24 spots available so book your place as soon as you can. Write your name in Welford golfing history and on the famous yellow jacket with over 20 signatures already on it. All you need is your own set of golf clubs and golf shoes and a FAIR idea of your handicap.

So come on try your luck, burn off some your Christmas excesses and help the Golf Centre survive through the Winter.



PW RURAL SERVICES


PADDOCK AND GRASSLAND MAINTENANCE

- Paddock & Estate Care
- Grass Cutting & Topping
- Chain Harrowing & Rolling
- Overgrown Paddocks Cleared
- Fertiliser and Grass Seed Spreading

Peter Wattam

Mobile: 07860 524642

Email: peterwattam6@gmail.com

 Follow us on facebook

Barry Jones

Electrical Contractor

Stonebridge House

Back Lane

Shearsby

Leics LE17 6PN

Tel: 0116 247 8077

Mobile: 07831 474700

+ No job too small

+ Free Estimates

+ Reasonable prices

+ All work guaranteed



A Piece of Love

Quilting

...Handmade and bespoke quilted gifts and furnishings...go to Etsy and search [apieceoflovequilting](https://www.etsy.com/shop/apieceoflovequilting)



A Piece of Love Quilting



@apieceoflovequilting

WHAT'S ON IN WELFORD

(All currently subject to the situation relating to the Corona virus)

REGULARS—weekly, unless stated otherwise

MONDAYS

Yoga for All 10.00-11.30am	VH(MH)
Bell-Ringing 1 st and 3 rd week 7.30pm	CH
Rainbows 5-7 years 5.15 - 6.00pm	WYCC
Brownies 7-10 years 6.15 - 7.30pm	WYCC
Guides 10-14 years 7.30 - 9.00pm	WYCC
Table Tennis 7.00-9.00pm	VH(MH)
Welford in Harmony 7.30—9.00pm	CPL

TUESDAYS

Intermediate Pilates 9.30-10.30am	WYCC
Intermediate Pilates 6.00-7.00pm	WYCC
Intermediate Pilates 7.15—8.15pm	WYCC
GN Coffee Morning 1st week 10-12.30	VH(MH)
Short Mat Bowls 7.00-8.30pm	VH(MH)
ISE 10.00-4.00pm 2nd in Month	VH(MH)
Bridge 7.30-10.00pm 1st & 3rd of the month	VH(BR)
Mending Circle 7.30-9.00pm 2nd of the month	VH(BR)

WEDNESDAYS

Welford Watercolourists 9.00am-12.00	VH(BR)
Gardening Club 3rd week 7.00-9.45pm (September—May)	VH(MH)
Welcome Club 2 nd week 2.00-4.00pm	VH(BR)
Football U9s (Y4 & below), Colts (16+), Vets (35+) From 6.15pm	WSF
Beginners Pilates 10.00-11.00am	WYCC
Yoga with Carla 7pm-8pm	WYCC
<u>Hockey Training</u>	
KS2 / Secondary 7.00-8.00pm	LUT
16+ / Adults 8.00-9.00pm	LUT

THURSDAYS

Parish Council 4 th week 7.30pm	VH(MR)
Women's Institute 2nd week 7.30-10.00pm	VH(MH)
Village Hall Meeting 4th week 3.30pm	VH(BR)
See the pace fitness club 7pm-8pm	WYCC

FRIDAYS

Babes and Tots 9.30 - 11.00am	WYCC
Bosworth Tots 9.30 - 11.30am	HBVH
Beaver Scouts 6-8 years 5.00-6.00pm	WYCC
Cub Scouts 6.00-7.30pm	WYCC
Scouts 7.30-9.00pm	WYCC
Rita the Refill Van & Coffee Morning 10am-12 alternate Weeks, starting 2/9/22	VH(BR)

MONDAY - FRIDAY

Welford Pre-school 9.15 - 3.15pm	PSM
Breakfast club 7.45am - School start	PSM
After School Club. End of School - 5.30pm	PSM

SATURDAYS

Blockhead Quilters 9.15am-4.15pm 2nd of the month	VH(MH)
---	--------

SUNDAYS

<u>Hockey Training</u>	
Juniors (KS1 9.00-10.00am)	NPF
Explorer Scouts 14-18 yrs 7.00-8.30pm	WYCC

EVENTS

DECEMBER

Advent Windows—throughout December	
2nd PS Xmas Quiz	WYCC
3rd Xmas Jumper swap	VH
8th Salvation Army Brass Band	SK VH
9th WSFA Xmas Quiz	WYCC
10th Welford in Harmony—Xmas Concert	CPL
22nd Coffee morning	VH
24th Come and sing carols	CH

FEBRUARY

10th Charity Coffee & cake morning	VH(BR)
------------------------------------	--------

MARCH

2nd Casino Royal Casino night	WYCC
-------------------------------	------

VENUES:

CAGC	Cold Ashby Golf Club
CH	Church
CPL	Chapel
PSM	Pre-School Mobile
PP	Pocket Park
SCH	Welford School
VH(BR)	Village Hall Billiard Room
VH(MH)	Village Hall Main Hall
WSF	Welford Sports Field
WYCC	Welford Youth and Community Centre
WW	Welford Wharf
RC	Rugby College
NKA	North Kilworth All weather
NSC	Naseby Sports Court
WTC	Welford Tennis Club
YPF	Yelvertoft Playing Fields
NPF	Naseby Playing Fields
HBVH	Husbands Bosworth Village Hall

For further information or to have your dates listed please contact us on welfordbugle@outlook.com Keep up to date with events or advertise on www.welfordvillage.co.uk or follow @Welfordvillage on twitter.