

# THE WELFORD BUGLE

Issue No 282  
August 2021

Next 'Copy' Deadline  
26 September 2021



## WELFORD COMMUNITY FAIR SATURDAY 11TH SEPTEMBER

Celebrate our wonderful village with a fun-filled afternoon for all the family

---

### 12 TO 2PM: THE PLAYING FIELD

Come along to the playing field (the park) for some fun sporting activities, refreshments and a BBQ.

---

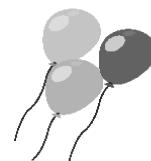
### 2 TO 5PM: THE MANOR HOUSE

Enjoy all that was originally planned for the Church Fête: Tombola, craft stalls, local interest groups, plus the Great Welford Bake-Off tent!

---

### EVENING: THE WHARF

Round off the day with some great food, a few drinks and live music at our village local.



You can also read the Bugle online at: <https://www.welfordvillage.org.uk/>



**POLICE: 101 or 999**

#### EMERGENCY NUMBERS

**STREET DOCTOR: 0300 126 1000, (select option 4)**

'Copy' and advertisements for the next Bugle should be sent to: [welfordbugle@outlook.com](mailto:welfordbugle@outlook.com)  
Or directly to Sheila Scullion, 32 Wakefield Drive, Tel: 575784, Andrew Parsons, 2 Northampton Rd, 571258  
John Nicholas, 25 High Street, Tel: 575422 Susie Bevin, West End Farm, Tel: 575226  
**TO ARRIVE NO LATER THAN THE 'COPY' DEADLINE MENTIONED ABOVE**

Advertisements and Donations handled by Andrew Parsons, 2 Northampton Rd, 571258, [welfordbugle@outlook.com](mailto:welfordbugle@outlook.com)

## Notes from Welford Parish Council

- The upgrade to the street lighting by the Parish Council has now been completed and street lights in the village are LED lit. They are more directional in the way that light is directed downwards and no upward light pollution, they are considerably cheaper to run and are guaranteed for 10 years. There will be a review of areas of the village that appear to be dark should there be a requirement for more lighting. If you feel that a light needs to be installed near you please contact the Clerk to the Parish Council by email [clerk@welfordvillage.org.uk](mailto:clerk@welfordvillage.org.uk)
- The Parish Council has asked a local carpenter Paul Smith to undertake repairs to the benches in the children's play area on the Playing Field as well as the bench by the basketball wall.
- New safety matting has been installed in the children's play area by Kettering Playsafe as part of the regular maintenance of the area by the Council. The Council also recognise the need for a larger bin in this area as the current bin is inadequate to cope with the rubbish currently left; users are asked to take their rubbish home if possible until a new bin is in place.
- The Parish Council has recommenced public meetings in the Village Hall, members of the public are welcome to join the Council at their next meeting on the 23<sup>rd</sup> September, the meeting starts at 7.30pm and the agenda for the meeting will be available on the village website and on the notice boards outside the Village Hall in the week before the meeting.

*Ian Kelly, Clerk to the Parish Council*

## Donations

The Bugle is dependent upon the kind generosity of its donors and advertisers to cover the costs of producing the Bugle. In order to make best use of the donations received we recognise them here. The editorial committee would like to thank the following people for their donations to help keep the Bugle bugling:

- |                |              |              |
|----------------|--------------|--------------|
| • A Bott       | • M&D Wright | • B&S Sneath |
| • J Goodfellow | • T Cutt     | • L Bourton  |
| • J Deacon     | • V Perkins  |              |
| • T Eames      | • I&S Elmes  |              |
| • E Campbell   | • E Bond     |              |
| • A Bridgstock | • G Pitcher  |              |

**JOSEPH MORRIS**



South Kilworth  
Tel:- 01858 575210

**HIGH CLASS FAMILY BUTCHER, FREEZER SPECIALIST AND CATERING SUPPLIERS**

All meat locally fed and prepared in our own sympathetically run abattoir.

Visit our website at:-  
[www.joseph-morris.co.uk](http://www.joseph-morris.co.uk)

**CATERING - COOK & COLLECT PRESERVES - TEA PARTIES**



**TEL. DEBBIE: 01858 571104**  
**WWW.GREENSCK.CO.UK**

*Flower & Farmer*

*Flower farm near Guilsborough, Northants*

- Bouquets and bunches
- Arrange your own buckets and seasonal flower subscriptions
- Farm gate events – opening dates are on our website
- "Ready to Wear" and "DIY" weddings



[www.flowerandfarmer.com](http://www.flowerandfarmer.com)  
info@flowerandfarmer.com | 07977 329550

## WADS

As restrictions have now been lifted, we are delighted to announce that we intend to stage 'Dad's Army' in the Autumn.

On our usual dates, Nov 24<sup>th</sup>, 25<sup>th</sup> and 26<sup>th</sup> with a matinee on the 27<sup>th</sup>.

Obviously we will be working with the Village Hall Committee to ensure the safety and well being of our cast and customers and arrangements for this will be announced nearer the time.

We know that, like us, you will have missed live performance and we are really looking forward to welcoming you again and entertaining you.

Please look out for further information in the coming months.



Cherry Whiskin (Chair of WADS)

**WELFORD GARAGE**  
NORTHAMPTON ROAD  
Tel: 01858 575396

**Opening Hours**

Monday-Friday 7.30am-7.00pm  
Saturday 8.30am-6.00pm  
Sunday 9.30am-5.00pm

PETROL, DIESEL, PARAFFIN, CALOR GAS  
**Servicing, M.O.T. and repairs Undertaken**

LICENCED AIR CONDITIONING SERVICE AVAILABLE

---

MOTOR ACCESSORIES + PRE-PACKED COAL AND COKE

Eggs + Milk + Potatoes and General Groceries

CONFECTIONERY + SOFT DRINKS  
Sandwiches and Pasties

CAR SALES

## COMMON (OR EUROPEAN) ASH

### Fraxinus excelsior

If you are lucky enough to own a Morgan sports car, the wooden frame will certainly be made from an ash tree. Prized by druids and early norsemen alike, ash is made into items as diverse as hockey sticks, snooker cues and traditional lobster pots. The timber combines strength and elasticity and once seasoned, can be bent to shape. Certainly the wood of choice for a prize catapult.

Ash trees can grow to a height of 35m when fully grown and live for up to 350 years.

They prefer light, sandy soils and are most commonly sited in hedgerows and woodland. The bark is pale brown to grey and fissures as the tree ages.

The smooth twigs have distinctive black buds that make the trees easy to identify in winter. Leaves fall when still green in the autumn, leaving the winged 'keys' - the fruit of the ash, to fall in winter and early spring to be dispersed by birds and mammals

Being so long-lived, ash trees support many other species, the lesser stag beetle being just one of note. The leaves are an important food plant for the caterpillars of many moths: the coronet, brick, centre-barred sawfly and privet hawk-moth.

*Ash dieback is a deadly fungal disease that affects ash trees of all ages. Although we are at the beginning of this epidemic, it is now evident in all areas of the UK. The Woodland Trust believe that we will lose around 80% of our ash trees which will have a devastating impact on our landscape and biodiversity. Please do contact me if you would like to help to monitor the spread of ash dieback in Welford.*

Helen Dyson

01858 575200 [helen@dysondesign.com](mailto:helen@dysondesign.com)



PRACTICE MINDFULNESS



# YOGA FOR ALL



**YOGA CLASSES**  
IN WELFORD VILLAGE HALL  
FOR ALL AGES AND ABILITIES

MONDAYS 10am - 11.30am  
STARTS 13TH SEPTEMBER

WEDNESDAYS 7.30pm - 9pm  
STARTS 15TH SEPTEMBER

£30.00 FOR 6 SESSIONS  
(£27.00 FOR CONCESSIONS)

TRY YOUR FIRST SESSION  
FOR FREE

BOOKING ESSENTIAL  
WENDY WILLIS  
TELEPHONE 01604 740437

LEARN TO RELAX



WELFORD  
**WILDLIFE**  
SURVEY 

# THE GREAT BIG GREEN WEEK

18-26  
SEPTEMBER  
2021

## **A WEEK OF ACTIVITIES THAT FOCUS ON SUSTAINABILITY AND IMPROVING OUR ENVIRONMENT FOR A GREENER FUTURE.**

In September communities across the country will join together for the Great Big Green Week. It will be the biggest event for climate and nature ever in the UK, and we want Welford to get involved.

We are putting together a series of events and activities throughout the week with the aim to promote sustainable and eco-friendly living with ideas for everyone.

The final program of events is still being finalized but we hope to include talks on growing your own veg and composting, reducing plastic use, zero-waste ideas, a film screening, a photo exhibition showcasing the beautiful place we live in, litter picking and more. Most importantly, we want to get everyone involved so if you are part of an organization and would like to host an event, or if you are someone who just wants to help out then please do get in touch. Otherwise, please keep a look out for more details over the coming weeks.

Jules Bennett, Hannah Bedard and Bill Wright [welfordvolunteers@gmail.com](mailto:welfordvolunteers@gmail.com)



**TW**  
LANDSCAPE &  
PROPERTY SERVICES

PLEASE CONTACT THOMAS  
FOR A NO OBLIGATION FREE QUOTE:  
07525064220  
[twlandpservices@outlook.com](mailto:twlandpservices@outlook.com)  
[www.twlandpservices.com](http://www.twlandpservices.com)

Offering a wide range of Hard and Soft Landscaping  
Fencing & Repairs - Garden Maintenance & Clearance  
Tree & Hedge Pruning - Turfing  
Driveway Installation & Maintenance  
Patio Installation & Maintenance - Decking  
Timber Cabin. Shed. Stable and Garage Builds  
Ponds & Water Features - Concrete Bases  
Household Repairs & Maintenance

 **Kilworth Springs**  
PREMIER GOLF CLUB

**Open to the Public**  
**Golf Course, Driving Range, Tuition**  
**Bar & Restaurant - Open All Day**  
**Event & Conference Facilities**

T: 01858 575 082  
E: [admin@kilworthsprings.co.uk](mailto:admin@kilworthsprings.co.uk)  
W: [www.kilworthsprings.co.uk](http://www.kilworthsprings.co.uk) 

## FRIENDS OF THE WELFORD ARM

Following the successful boat rally in 2019 celebrating the 50th anniversary of the re-opening of the Welford Arm, a small group of local residents thought it would be a good idea to continue working with the Canal and River Trust (CRT) to keep the Welford basin, lock and towpath looking tidy and doing general maintenance, painting, gardening and hedge cutting etc. To this end Friends Of The Welford Arm (FOTWA) was formed. We aim to have a work party at least once a month usually on a Saturday but occasionally hold some on week days as well.

Now that lockdown is hopefully behind us, our small group of volunteers are able to meet again to wrestle nature into submission.

If you are fit and keen to lend a hand, please contact Tim at the email address below.

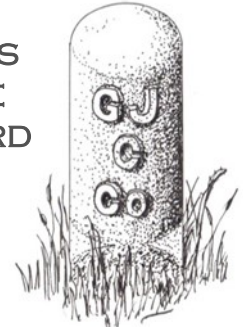
We are a fully recognised volunteer group, supported by CRT.

Contact: [admin@friendsofthewelfordarm.org.uk](mailto:admin@friendsofthewelfordarm.org.uk)



<https://canalrivertrust.org.uk/>

FRIENDS  
OF THE  
WELFORD  
ARM



### CARNIVAL QUIZ AT THE WHARF

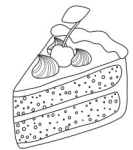
On Bank Holiday Sunday  
August 29th  
starting at 7.30 p.m.

Quiz time is back!! £6 gets you 100 questions and a curry or bolognese with rice. Please call the Wharf (575075) to book your table, teams of up to six people, and if it is anything like previous quizzes it will be a fun night. Please book early because with the social distancing still partly in operation the maximum number of tables will be 12.



### Great Welford Bake-off

The Bake-off is back as part of the Community Fair on 11th September. Just £1 to enter the categories this year are:-



Showstopper cake - a tasty and beautifully decorated cake  
Traybake of Bakers choice eg Brownies, flapjack etc  
Allergen cake eg nut free, dairy free, gluten free etc  
Sponge cake any flavour!!

#### Children's classes:-

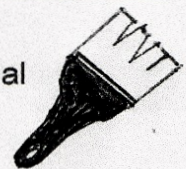
Under 7s Under 11s Under 16s. Children's categories are:-  
Decorated cake with an Olympic theme  
or 6 Decorated biscuits with a sporting theme

We would greatly appreciate it if entries could be donated to the tea tent after judging.

### Painter & Decorator

#### Adam Farmer

Local Qualified Professional  
Reliable and trustworthy  
Reasonable rates  
Quality materials



**For free quotation: Call or e-mail**

**Adam on 07938739205**

**[adamfarmer86@live.com](mailto:adamfarmer86@live.com)**

### JJ's Kiddycare



- 'OUTSTANDING' Ofsted grading
- Funded pre-school sessions for 2,3 & 4 year olds
- Full day care for 0-5 years
- Situated on a farm site between South Kilworth and Welford
- After school clubs (4-14 years)
- Holiday Clubs during all Leics and Northants hols

[www.jjs-kiddycare.co.uk](http://www.jjs-kiddycare.co.uk) Tel. 01858 575642  
[admin@jjs-kiddycare.co.uk](mailto:admin@jjs-kiddycare.co.uk)



### Barry Jones



Electrical Contractor

Stonebridge House  
Back Lane  
Shearsby  
Leics LE17 6PN  
Tel: 0116 247 8077  
Mobile: 07831 474700

- + No job too small
- + Free Estimates
- + Reasonable prices
- + All work guaranteed

## Nature Notes

The weather continues to be capricious, just to make sure that we have plenty to talk about! Rain comes just in time to keep the lawn and everything else freshened up, but farmers are trying to harvest hay and silage and now grain and they would like longer spells of securely dry weather while they get crops safe. There was a week when everyone wished they had been beside the seaside with a cooling breeze, but mostly it has remained catchy. The season is definitely changing to late summer/autumn. I have noticed the mauve spikes of Rose Bay Willow Herb on verges. I can remember being very proud of being able to say that as a child. Also, Ragwort is making its yellow presence felt. I noticed just a few plants between here and Leicester recently. It used to be notifiable as it is very poisonous to horses, but there is much more about on verges and roundabouts as you go further east. The Royal Horticultural Society is championing it in a wildflower garden with a Gold medal. It is certainly an insect honeypot. I pulled one up from our veg garden and it was covered in butterflies and insects, but I was worried about its poisonous qualities. I also heard recently that Sycamore seedlings are poisonous to horses. If one ate about 50 seedlings it would prove fatal, and as we have sycamore trees in our garden - but fortunately no horses - I know just how many seedlings they can produce. The birds seem to be thriving - especially the Magpies which have suddenly multiplied. I was thrilled to see a Bullfinch recently with its vividly pink breast, and a green woodpecker has been ant hunting both on the lawn and on the trunk of the Sycamore tree. The veg garden is getting into its stride. The Sweetcorn is in flower and after hearing about badgers foraging for it in Morley's Allotments we have taken preventative measures hoping to keep them at bay as we have badgers in the back field. Courgettes are yet again reliably prolific, and the runner beans are getting into their stride. All very satisfying - just worried about the moles which are encroaching. Sharing the planet with wildlife is a great ambition, but not always conducive to feeding the population! In aid of the birds I have completely avoided slug pellets this year, so am trying to do my bit for the natural world!

*Susie Bevin*

## *Thank you*

I would like to thank everyone who sent me the most beautiful cards for my special birthday on May 21st. Also the many gifts, thank you all. I was very upset with the constant changes of the lockdown. Everything had to be cancelled thanks to Mr Johnson. *Audrey Bott*

### **BELL RINGING PRACTICE :**



1st. and 3rd. Monday each month,  
7.30pm. to 9.00pm.

**New ringers always welcome.**

### **SPRINGFIELDS LOCAL VILLAGE SHOP, POST OFFICE & NEWSAGENTS**

**High Street, Welford**

**Groceries, Dairy, Fresh Meat,**

**Fruit & Veg, Wines & Spirits,**

**National Lottery,**

**Fresh Bread Daily**

**Tel 575666**

**SUPPORT YOUR LOCAL STORE**



Finding a trustworthy estate agent  
is like finding a needle in a...

**Oh, never mind!**



**01858 882140**

 [exphusbandsbosworth.co.uk](http://exphusbandsbosworth.co.uk)

## Jobs for the garden

The peak of summer is here! and your garden will be hitting its stride with flowers and new leaves! Taking some time to pick flowers, deadhead, weed and keep an eye on watering will mean your garden continues to flourish into the rest of Summer.

### Seeds to Sow:

#### Flowers:

Pinch out the tops of annuals to make them bush out and produce more flowers.

Try snipping spent foxgloves back to allow the side flower spikes to grow.

Cut back hardy geraniums when their foliage looks untidy, feed them and new foliage will appear.

Take cuttings of tender perennials such as salvias, pelargoniums and penstemons.

#### Veg Patch:

Pinch out the tips of squash and courgettes to encourage branching

First earlies and second early potatoes can be harvested now before any blight sets in.

If you want Christmas spuds, now is the time to plant some seed potatoes.

Sow winter vegetables: Kale, Cauliflower, Cabbages and Swiss Chard.

#### Fruit:

Lift and divide large rhubarb crowns, discard the old middle and re plant divided outer growth.

Prune plum trees in midsummer to avoid canker and silver leaf disease

Prune out raspberry canes to avoid congestion, keep their bases weed free and well watered.

#### Wildlife:

Avoid trimming hedges until late August so as not to disturb nesting birds.

Top up ponds and leave the lawn mower alone to allow frogs and newts to disperse safely.

Feeding hedgehogs with water and a chicken flavour dog or cat food will help them start to fatten up for Autumn

Hannah Edge Bosworth Bulbs

Bosworth  
Bulbs



@bosworthbulbs

[www.bosworthbulbs.com](http://www.bosworthbulbs.com)

**Bulbs & Seeds Delivered  
to Your Door**



**Bulbs | Tubers | Corms | Seeds**

Onion Sets | Seed Potatoes  
Vegetable Seed | Fruit Trees

Free Delivery to Welford (NN6)



**TRIBE**

Massage & Wellness

**Get a MASSAGE for  
the HEALTH of it!**

The gift of health is PRICELESS! Our unique, proven **TriHealth** method empowers us to reach optimal health in three natural ways.

**MASSAGE** - Pain Relief. Stress Buster.

Restore Joint Range & Body Mobility.

**BEMER** - Improve Blood Flow &

Circulation. Stimulate Healthy Muscles.

**NUTRITION** - 100% Natural. Highest Quality. Certified Organic Supplements.

Tel: 07400 112510

Email: [health@tribemassage.com](mailto:health@tribemassage.com)

Website: [www.tribemassage.com](http://www.tribemassage.com)

Be Healthy. Be Happy! 😊

*Bliss & Beauty*

The Complete Skincare Specialists



Bliss & Beauty specialise in skin treatments, but we offer all your usual beauty treatments in our quiet, peaceful barn. With free parking outside the door, and excellent safety measures in place, we maintain a safe environment without compromising on your experience. Head over to our website where you can see some of the measures we've implemented, as well as some of our excellent reviews.

[www.blissandbeauty.co.uk](http://www.blissandbeauty.co.uk)

01858 571244 | 07773 235433 | [info@blissandbeauty.co.uk](mailto:info@blissandbeauty.co.uk) | [www.blissandbeauty.co.uk](http://www.blissandbeauty.co.uk)  
Bliss & Beauty, Dog Lane, South Kilworth, Leicestershire, LE17 6DY

"Like" us on Facebook to keep up to date with our latest news and offers.

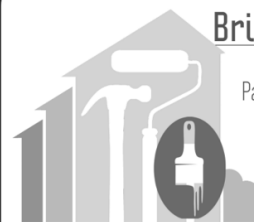


**Bricoleur Handyman Services**

Painting & Decorating, Odd Jobs, Small Repairs,  
Your DIY Done, Garden Clearance + More

Mobile: 07779 831173 / Home: 01858 575758

email: [bricoleur.handyman.services@gmail.com](mailto:bricoleur.handyman.services@gmail.com)



Nigel Wilson

All Jobs Considered

Welford  
Northamptonshire

## SimplyBePilates



**New Beginner Class  
WYCC Weds 10am**

**Intermediate WYCC  
Tuesday**

**9.30am, 6pm & 7.15pm**

**Zoom: Weds intermediate  
5.15pm/Thursday stretch  
9.30am**

**Private small group  
studio (max 3) available  
from September**

For more information:

Contact Anne: 07738119606

[anne@simplybepilates.co.uk](mailto:anne@simplybepilates.co.uk)



ACCA Qualified Chartered Accountants

Providing professional services covering a range of areas

Book – keeping

Accounts

Payroll

Construction Industry Scheme

VAT

Limited Company Formations

Capital Gains Tax

Self-Assessment & Partnership Returns

Business consultancy & advisory

Telephone: 01858 571197

Email: [info@beagleaccounting.co.uk](mailto:info@beagleaccounting.co.uk)

Website: [www.beagleaccounting.co.uk](http://www.beagleaccounting.co.uk)

23a High Street, Welford, Northamptonshire,  
NN6 6HT

## WELFORD EDUCATIONAL TRUST

The Welford Educational Trust exists to promote education, (including social and physical training) of persons under the age of 25 years, who are resident in the Ancient Parish of Welford and who are in need of financial assistance.

The Trustees meet in September and February each year.

In the past, students have received financial help towards the cost of books for college and university courses. Students wishing to apply for a book grant must complete an application form available from the Secretary, Ms. S. Barlow, 5 Westfield Crescent, Welford, Northampton. NN6 6HY, 01858 575748. Completed forms should be returned to the above address by **1<sup>st</sup> September 2021**. Late applications cannot be considered. Please note that book grant applications will only be considered at the September meeting each year.

At both meetings the Trustees will also consider applications from individuals and youth groups to provide financial assistance towards education, training and other needs. Applications by letter to the Secretary by **1<sup>st</sup> September/1<sup>st</sup> February**.

## BUGLE NEWS

The Bugle is here to let everyone in Welford know what is going on in the village and appears early in February, April, June, August, October and December. Letters and articles for inclusion are always welcome.

It saves paper and some time in putting the issues together if articles are presented if possible as emails. They can be sent as attachments in MS Word and can then be easily used.

However don't worry if hand written paper is your preference, it is still welcome. So, if you have an item which you would like published, if possible email it to: [welfordbugle@outlook.com](mailto:welfordbugle@outlook.com)

If you are unable to e-mail then you can find our postal addresses on the front page.

**Please ensure any articles are received by the copy date on the cover. Thanks.**

*Andrew Parsons*



## Happy Feet

Registered  
Foot Care  
Specialist



- Toe nail cut
- Corns
- Verrucas
- Ingrown toe nails
- Hard dry skin
- Fungal nails

Home appointments  
07842 266575

[www.happyfeetmidlands.com](http://www.happyfeetmidlands.com)

## F & W Plumbing & Heating Services Ltd

North Kilworth, Lutterworth, LE17 6HX

Bespoke Bathroom & Kitchen Design & Installation.

Over 30 years experience in Designing and Installing Contemporary to Traditional Kitchens and Bathrooms.

Plumbing | Joinery | Plastering | Electrical | Decoration | Floor & Wall Tiling

Gas Safe Reg. No 75883 | Hot & Cold Water System Upgrades | Boiler System Upgrades

Call Jason for Free Quotations | Ideas & Inspiration on 07866 741261.

Email: [jayspanner@btinternet.com](mailto:jayspanner@btinternet.com)

Professional | Committed | Competitive | All Work Guaranteed



## In loving memory of Sweetie

It is with a heavy heart that the Nelson family of Husbands Bosworth announce the passing of their one year old dog Sweetie. The incident occurred at the overflow section of the Welford wharf.

Sweetie was a Chorkie, which is half Chihuahua and half Yorkshire Terrier. Her soft, kind eyes prompted the name, and countless people who came in contact with her would say, "What a little Sweetie", without yet knowing her name.

Sweetie ran through some unusually tall grass without seeing the water. Before anyone could stop her, she fell in.

Within seconds she was swept into the tunnel. Her owner entered the water to try and rescue her, to no avail.

Sweetie was a dear member of the Nelson family and will forever be missed.

One positive that will come from this is a host of preventive measures being implemented by the Canal and River Trust, to ensure no child or pet suffers the same fate.

A protective gate is being installed in front of the tunnel to prevent objects passing through. The grass will be better maintained to allow for visibility of the overflow and a length of fencing in each side of the overflow is going to be installed.

The Nelson family ask you be extremely careful around this section of the canal with both yourselves, children and pets.

## PW RURAL SERVICES

### PADDOCK MAINTENANCE AND STABLE REPAIRS

- Paddock & Estate Maintenance
- Stable & Field Shelter Repairs
- Fence & Gate Repairs
- Grass Cutting & Topping
- Chain Harrowing & Rolling
- Fertiliser & Grass Seed Spreading
- Overgrown Paddocks Cleared

**Peter Wattam**

Mobile: 07860 524642

Email: peterwattam6@gmail.com



**Moorepaws**  
**Dog Grooming**  
**07931 744170**  
moorepawsdoggrooming@gmail.com  
Welford Northants  
f t i s

## Advertising in the Bugle

Thank you to all of our wonderful advertisers who help to cover the costs of the Bugle. We have for many years kept our prices fixed to just cover the costs of printing and posting. However, due to increases in our costs we have reviewed our prices and will be increasing them from the October edition onwards (although this will not impact anyone who has paid in advance for a year).

We regularly have requests for larger adverts and we have decided to allow a limited number of these based on a first come first served basis. So for October edition onwards the prices will be:

- Standard (8cm x 6cm or 6cm x 8cm) - £6 per edition / £30 per year
- Quarter page—£10 per edition or £55 per year
- Half page—£15 per edition or £85 per year
- Full page—£30 per edition or £175 per year

For all contacts regarding advertising in the Bugle please contact Andrew Parsons (Prospect House / 2 Northampton Rd) 571258 - or email the Welford email account:

## CHURCH NEWS

Please look out for posters telling you when the church will be open every day. This will happen during August.

Church services are now almost back to normal, mask wearing is optional, we can now sing again, and hopefully we can go back to having a coffee after evensongs. So please come along to the next services and join us. We do, for the time being keep an amount of social distancing as a precaution.

### Harvest Lunch

**Sunday 26<sup>th</sup> September  
In The Community Centre  
from 12 noon.**

Hooray!! It's back! We have kept it at the bargain price of £7.50 per person (£4 for children under 14) to include a main course (usually with seconds if you want or have room) followed by delicious puddings. There will be a bar and of course a raffle. Please contact Val and Mick Morson (575333) or John Nicholas (575422) to reserve your places. We will have to limit the numbers to about 75 so it is advisable to book early. Please do not just turn up and expect to get a meal, we can only cater for those we know are coming. We look forward to seeing you!



## The Wharf Inn

TEL: 01858 575075  
Welford, Northants. NN6 6JQ

### OPENING TIMES BAR.

From Monday 12<sup>th</sup> April – GARDEN  
TUES – THURS 12 – 8pm  
FRI – SAT 12 – 10pm  
SUN 12 – 8pm  
Tuesday – 18<sup>th</sup> May – INSIDE & GARDEN

(CLOSED Mondays  
except 12 April)

food service will be the same as our  
takeaway service times.  
Takeaways will not be affected

All pending government guidelines  
Many thanks for your continued support.



## Heat Stroke In Dogs

### OUTDOOR TEMPERATURE

**32+°C**   
Heat stroke is a major risk regardless of condition, size or breed.

**28-31°C**   
Dangerous for all, but life-threatening for larger breeds and puppies as well as dogs who are flat-faced or obese.

**24-27°C**   
Extreme caution should be taken as most dogs, particularly those who are large, obese, flat-faced and very young, will find these temperatures very uncomfortable.

**20-23°C**   
Even at this temperature dogs are at risk of getting heat stroke if exercised too rigorously, or suffering from an underlying condition such as obesity or breathing difficulties.

**16-19°C**   
Generally safe to exercise dogs at all times of day, although keep a close eye on large, obese and flat-faced breeds.

**12-15°C**   
No evidence of heat stroke risk so enjoy your walk.

### Heat Stroke Kills Dogs

Every year our emergency vets treat hundreds of heat stroke cases and, heartbreakingly, some end in tragedy. Many are a result of owners exercising their dogs between 8am and 8pm when temperatures can be at their peak.

Heat-related illnesses are almost always preventable, but it's critical to know when dogs are at risk. Our handy guide shows when it's safe for your dog outside.



Be prepared this summer.  
Save your pet emergency  
service number now.  
[vets-now.com/morser](http://vets-now.com/morser)

© The Vet Code Page 20/20/2018 17:01:00. Consulting 12/2018

**Vetsnow**  
Your pet emergency service

## JR BESPOKE PROPERTY RENOVATIONS



JLR Bespoke Property Renovations are an experienced and trusted Project Management and Construction team based in North Kilworth, Leicestershire.

If you have a project or idea in mind, please don't hesitate to contact us either by phone or via our website.  
Tel: 07866 741 261 (Jason Wright)  
[www.jlrbespokeproperties.com](http://www.jlrbespokeproperties.com)

## KELVIN BROAD PLUMBING HEATING ELECTRICAL

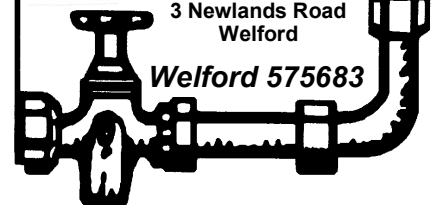
24 hr Emergency Service



FREE ESTIMATES  
All Work Guaranteed  
References available

3 Newlands Road  
Welford

Welford 575683



## Thank you Welford School (WSSES)!

Our daughter, Iris, finished her time at Welford School on 16<sup>th</sup> July ready to move on to secondary school. We are so grateful that she has had such a happy, safe and secure start to her education at our village primary school. The school has such a strong community and wonderful values that set students up to be wonderful young people.

Also, big congratulations need to be said to Mrs Pye and the whole school team for managing to keep the school open throughout the pandemic (apart from when the school was forced to close to all except the children of key workers during the two main lockdowns) – the school hasn't had any bubble closures at all which means no students have had to self-isolate because fellow students have been infected with Covid-19. This is a massive achievement and a big contrast to many other schools around the country.

*Lucy and Andy Parsons*

## Do you remember your leavers' play?

As I sat watching Iris and her friends in their Year 6 leavers' play (Teachers Do Strictly – very entertaining!) I was thinking back to the leavers' play I did with my fellow year sixes in 1991. We did a play based on the popular Australian soap, Neighbours, because Mr Jones was always saying how much he disliked it!

I was wondering how far this tradition of doing a play that gently takes the micky out of your teachers goes back. I know it goes back 30 years – how much further does it go?

*Lucy Parsons.*

### INDEPENDENT FINANCIAL & MORTGAGE ADVICE

I OFFER A FREE INITIAL MEETING TO SEE IF I CAN HELP WITH;  
MORTGAGES INCLUDING EQUITY RELEASE & REMORTGAGES  
PENSIONS ADVICE  
LIFE, CRITICAL ILLNESS AND INCOME PROTECTION INSURANCE  
INVESTMENTS INCLUDING ISAs

**YOUR HOME MAY BE REPOSSESSED IF YOU DO NOT KEEP UP REPAYMENTS ON YOUR MORTGAGE.**

Equity Release will reduce the value of your estate and can affect your eligibility for means tested benefits. **"This is a lifetime mortgage (home reversion scheme). To understand the features and risks, ask for a personalised illustration or a European Standardised Information Sheet."**

**The value of pensions and investment and the income they produce can go down as well as up and you may not get back the full amount that you originally invested.**

**Tom McCullagh Financial Services** is a trading name of LJ Financial Planning Limited which is authorised and regulated by the Financial Conduct Authority and is entered on the financial services register [www.fca.org.uk/register](http://www.fca.org.uk/register) with firm reference number: 429142

Tel -01858575121

Mob-07880963016

[tom@tomccullaghfinancialservices.co.uk](mailto:tom@tomccullaghfinancialservices.co.uk)

## Property

It might seem odd for house prices to be rising during a global pandemic. But this month, average asking prices are at a record high of £255,000.

So why is this?

Demand for properties is outstripping supply. Homes are selling faster than ever before, and a record number are being sold at or above asking price.

Large, detached homes with big outdoor spaces are in high demand from buyers with big budgets, with many now working remotely and commuting less. These sales at the top end of the market are lifting the average price upwards.

Lots of people are moving from more expensive city areas to the countryside or the coast. This is pushing up prices in towns and villages in the most in-demand regions.

The temporary reduction of stamp duty tax rates in England is nearly over, but offered buyers potentially up to £15k of saving – prices rose to swallow up the saving, meaning buyers didn't benefit from the holiday but sellers did.

Very low interest rates have also helped more people to get on the property ladder, or to upsize to bigger and more expensive homes.

A government-backed mortgage guarantee scheme launched in March, offering buyers with small deposits access to 95% mortgage loans. Most high loan-to-value mortgages were withdrawn by major high street lenders in the past year or so, but now many are back to offering 90% and 95% mortgage products.

Many of you reading this might think that this combination of low interest rates and high loan to value lending sounds awfully familiar....

So is it a bubble? I hope not! And thankfully there are signs of a slow calming in the market; prices have not risen in some areas since March and the rate of rise is slowing everywhere. As always, time will tell.

*Mark Baldwin*



### Jon Smurthwaite Bookkeeping

Providing flexible, friendly & professional bookkeeping and accounting services to local people and businesses.

Tel: 07887 585217 / 01858 575842

E-mail: [info@jonsbookkeeping.co.uk](mailto:info@jonsbookkeeping.co.uk)

Website: [www.jonsbookkeeping.co.uk](http://www.jonsbookkeeping.co.uk)

Jonathan Smurthwaite FCA

43, The Leys, Welford, Northamptonshire, NN6 6HS



### WELFORD RAINFALL IN MILLIMETRES



	2011	2012	2013	2014	2015	2016	2017	2018	2019	2020	2021
JAN	41.5	46.5	58.0	119.0	59.5	81.0	59.0	68.0	26.0	51.5	117.5
FEB	54.0	23.5	42.0	74.0	41.0	43.0	59.5	29.0	31.0	121.0	47.0
MAR	7.5	27.0	62.0	43.5	27.0	78.5	54.0	166.5	55.5	35.5	46.0
APR	5.5	155.0	22.5	31.0	25.5	50.0	10.5	65.0	15.0	35.0	9.0
MAY	31.5	55.5	75.5	109.0	54.0	45.0	80.0	85.0	46.5	10.0	141.0
JUN	59.0	135.5	41.5	69.0	26.0	77.5	52.0	1.0	148.5	66.0	43.5
JUL	41.0	99.0	92.0	31.0	81.5	19.0	71.0	14.5	125.0	63.0	59.5
AUG	53.0	94.5	51.0	95.5	53.0	56.0	78.5	52.5	79.0	140.0	
SEP	20.0	51.5	26.0	8.0	50.5	45.0	79.0	36.0	89.0	28.5	
OCT	35.5	72.0	113.0	73.0	60.0	35.0	21.5	46.0	153.0	153.0	
NOV	36.0	127.5	39.5	82.0	65.0	79.5	44.0	40.5	132.0	62.0	
DEC	64.5	135.5	51.5	54.0	75.0	24.0	100.5	67.5	100.0	139.0	
TOT	449.0	1,023.0	674.5	789.0	618.0	633.5	709.5	671.5	1,000.5	904.5	463.5

Minimum for a particular month

Maximum for a particular month

#### FLAGS

AUGUST 2021

15th Princess Royal

SEPTEMBER 2021

10th Welford Feast Day (7 days)

OCTOBER 2021

21st Trafalgar Day



Welford Pre-School presents...



# ginger

eyes DOWN  
bottoms UP!

Join us for an evening of *bingo* with *gin*

**SATURDAY 4th SEPTEMBER**  
**(MORE DETAILS TO FOLLOW, ALL BEING WELL!)**

To reserve your tickets now, email:  
[niamhbland1985@gmail.com](mailto:niamhbland1985@gmail.com)

#### WELFORD ON THE WEB

You can read The Bugle on the Welford Web Site, as well as all sorts of interesting things about the village, by clicking onto : - [www.welfordvillage.org.uk](http://www.welfordvillage.org.uk) And twitter on @WelfordVillage



## HANNAH

— BEAUTY THERAPY —

## COLLINS

BY APPOINTMENT ONLY

T : 07736 939993

[hcbeautytherapy.co.uk](http://hcbeautytherapy.co.uk)

A Unique One-to-One  
Personal Beauty Experience  
42 High Street - Welford

## WELFORD W.I.



### JUNE MEETING

Hip, hip, hooray – Welford WI was back in the village hall for the June meeting – albeit under COVID-19 restrictions. With the maximum allowed of 24 members, plus the speaker and her husband, a further 6 members and 4 guests were able to join the meeting remotely. President Denise Cattell gave details of future events and requested volunteers to bake cakes for the Cynthia Spencer Hospice. Christine O'Reilly gave a resume of the National Annual Meeting which she attended, via Zoom, as our delegate.

Denise introduced Kazia Myers who, as a child, had been a member of the Polish camp and had attended Welford school. She spoke movingly of the severe trials and tribulations that had eventually led to her, her family and other families being housed at the Polish Camp.

Next month's meeting will be held in the Village Hall (Covid rules permitting) and again with access via Zoom. The speaker will be Camille Ortega on 'The Pickle Shop'. AT

### JULY MEETING

After welcoming 24 members into the Village Hall and 6 members via zoom, President Denise Cattell was obliged to convey the apologies of our speaker for the evening – he was outside the Memorial Hall – Welford-upon-Avon. Denise then continued the business of the evening – reminding members of various forthcoming activities, including providing cakes for the Cynthia Spencer Hospice and speaking of the proposal, come the Autumn, for regular craft/activity sessions. It was suggested these be held in any of the suitable locations in Welford and would consist of a craft, skill, or activity in which members would wish to participate – varying month to month, all as could be agreed.

Christine O'Reilly spoke of the outings and events available from County, reminding members payments for these trips would be payable on application.

The winners of last month's competition for a doodle were announced and were 1<sup>st</sup> Pauline Underhill, 2<sup>nd</sup> Denise Bott and 3<sup>rd</sup> Jane Cottrell. The prizes were provided by Sue Brotherton.

In the absence of a speaker, and it being a lovely evening, Christine O'Reilly invited all present back to enjoy the delights of her garden.

As usual there is no meeting in August. The September speaker is Robert Agar-Hutton on Tai Chi – Health Exercise and Self Defence.

AT

*A Piece of Love  
Quilting*

*...for beautiful, hand-made quilts, quilted  
gifts and more.*

*My Etsy shop is OPEN! Search  
apieceoflovequilting*

 A Piece of Love Quilting  
 @apieceoflovequilting

**JANET FRANCIS-FLORES Bsc (Hons)**  
Podiatrist/Chiropodist, HCPC Registered.  
Home visiting service available.  
26 years NHS experience.  
Tel: 07792 408205 for appointments.



**Stefan and Raymund the Handymen**

Quality Woodwork, Plastering, Decorating, Tiling,  
Brickwork, Fencing, Patios, Decking, Guttering,  
Flat-pack assembly, General repairs and more...  
Not sure it's a job for the Handymen? Just pick up  
the phone, and ask!

**01858 881775**

StefantheHandyman@outlook.com  
RaymundtheHandyman@outlook.com

Find them on Facebook: @StefantheHandyman @RaymundtheHandyman

**Gary Matthews**

Traditional Mole Catcher,  
Farm / Domestic.

Certificated  
Moles/Rodents/Rabbits/Wasps.  
Welford

01858575552  
07787348951





**The Welford Youth and Community Centre is available to hire.** Located on Welford Park it is a perfect venue for groups to hire and for any type of family gathering. Recent bookings have included **Birthday parties, Wedding receptions, Dance practices and Presentation evenings.**

The comprehensive facilities include a modern kitchen with a cooker and dishwasher, toilets including a disabled toilet, baby changing facilities and a separate meeting room. All of this at a very reasonable hourly rate.

Presently available:

Daytimes – Monday, Tuesday, Wednesday, Friday afternoons and Weekends

Evenings – Tuesday, Wednesday, Thursday and Saturday.

For booking enquiries phone Ant on 01858 575678 or [welfordycc@outlook.com](mailto:welfordycc@outlook.com)



**Greg Palmer**

m 07814 401 244  
t 01858 571 093  
e [gregpalmer21@hotmail.co.uk](mailto:gregpalmer21@hotmail.co.uk)  
ws [www.gpgardeningervices.co.uk](http://www.gpgardeningervices.co.uk)

Open in school holidays

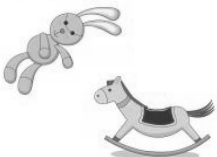


First session free!

### WELFORD BABES AND TOTS

Stay and play with your little one, meet other parents and carers, refreshments provided for you and your children, lots of fantastic toys. Expectant mums and newborns welcome!

Fridays, 9.30am – 11.00am  
Welford Youth and Community Centre  
£2.00 first child, 50p additional children, free for pre-crawlers and adults



Welford Babes and Tots  
Contact: Lucy on 07891287626  
or Claire on 07837852364  
or Helen on 07585669897

### Piano / Guitar / Bass lessons

Many genres offered by composer in Welford.

30 years teaching experience.

Min. 1x lesson per week.

Lesson: Thur (7PM - 10PM) / Sat (9AM - 12PM)

Course week durations - 13 (min.) / 26\* / 39\* / 47\*

\* = discounts offered - more weeks taken - course payment in advance

Contact Phill at 07739-470-469  
or [welfordmusiclessons@icloud.com](mailto:welfordmusiclessons@icloud.com)

*Professional hair styling in your own home*

hair by **J**ulie



Call Julie Bentham on:  
Tel: 01858 575675  
Mobile: 07891 426055

### Seasoned Hardwood & Kiln Dried Firewood, Coal & Kindling.

Sourced from Local Sustainable Woodlands

FREE, Fast, Friendly & Reliable Delivery Service

Carried and stacked in a location of your choice.

Contact: Mark 07813 103995

Email: [whmestate@btinternet.com](mailto:whmestate@btinternet.com)  
or website: [www.whmestate.com](http://www.whmestate.com)

New salon open in Brixworth

have a great **HAIR DAY**

**Claire Vasper**  
Formerly of Wharf Barns Hair

07949 404519  
[clairevasperhair@gmail.com](mailto:clairevasperhair@gmail.com)



Following 26 years of dedicated support to Welford Hockey club as a player, coach, umpire, committee member covering all roles, and all around ambassador for Hockey in the Village and the wider community - Ant Raisbury has chosen to step down from all of his roles with Welford Mixed Hockey Club to free up time for family and to develop other pursuits.

On behalf of the committee and the wider club membership - spanning many years – we would like to express our collective thanks to Ant for all that he has done from those early grass hockey days to the club we all enjoy today – many reading this message would have benefited from his tireless efforts to develop the club and the players within in it.

Whilst we should take time to reflect on Ant's contributions, we must also continue with our planning for the coming season with Mixed, Badgers, and plans for Men's Hockey still very much a priority for the continued development of our club.

Ours is a club very much centered around the membership and prides itself on providing opportunities for all to play, to develop and to enjoy the sport of Hockey.

As you might imagine, a number of short-term opportunities have opened up particularly around coaching and organising which must be picked up as we gear ourselves up for next season (some more urgent than others). If you are a hockey enthusiast (or parent/guardian of one) and would be interested in joining our committee and volunteering to help preserve all that is good about the club, please feel free to reach out to myself or any other member of the committee.

Please note, we will be pausing Summer Hockey Training (Adults, Badgers, and Sunday Juniors) whilst we regroup and reorganise – apologies for the inconvenience. We will post an update on training on our social media as soon as we are able.

Thanks and Kind Regards,

Matt Johnson (Acting Chair)



Malcolm Tanser found this photograph when he was clearing out. He thinks was taken in the Village Hall on Coronation Day, June 2nd 1953. Does anyone remember the occasion or recognise any of the people present?

# WHAT'S ON IN WELFORD

**(All currently subject to the situation relating to the Corona virus)**

## **MONDAYS**

Yoga for All 10.00-11.30am  
 Bell-Ringing 1<sup>st</sup> and 3<sup>rd</sup> week 7.30pm  
 Rainbows 5-7 years 5.15 - 6.00pm  
 Brownies 7-10 years 6.15 - 7.30pm  
 Guides 10-14 years 7.30 - 9.00pm  
 Table Tennis 7.00-9.00pm  
 ISE Group (Stitch & Expression)  
 10.00-4.00 2nd in Month  
 Welford in Harmony 7.00—9.00pm

## **TUESDAYS**

Doctor's Surgery 9.00-11.30am  
 Intermediate Pilates 9.30-10.30am  
 Intermediate Pilates 6.00 and 7.15pm  
 GN Coffee Morning 1st week  
 Short Mat Bowls 7.00-8.30pm  
 Bridge 7.30-10.00pm (1st and 3rd weeks)  
 Football 6.00-8.00 U16s and Sunday Adults

## **WEDNESDAYS**

Welford Watercolourists 9.00am-12.00  
 Ladies Fellowship 1<sup>st</sup> and 3<sup>rd</sup> week 2.30pm  
 Welcome Club 2<sup>nd</sup> week 2.00-4.00pm  
 Yoga for All 7.30-9.00pm  
 Gardening Club 2nd week 7.00-9.45pm  
 Football 6:30-8:45 U8s, Saturday adults & Vets  
 Beginners Pilates 10.00am  
 Intermediate Pilates 5.15pm (Zoom)

## **THURSDAYS**

Doctor's Surgery 9.00-11.30am  
 Dancing for Fun 9.45-11.30am  
 Pilates/Stretch 9.30 (Zoom)  
 Parish Council 4<sup>th</sup> week 7.30pm  
 Women's Institute 2nd week 7.30-10.00pm

## **FRIDAYS**

Babes and Tots 9.30-11.00am  
 Beaver Scouts 6-8 years 5.00-5.45pm  
 Cub Scouts 6.00-7.15pm  
 Scouts 7.30-8.45pm  
 Beavers/Cubs/Scouts  
 Dancing for Fun 7.00-8.30pm

## **MONDAY - FRIDAY**

VH(MH) Welford Pre-school 9.00 - 3.00pm PSM  
 CH Breakfast club 7.45am - School start PSM  
 WYCC After School Club. End of School - 6.00pm PSM

WYCC

WYCC

VH(MH)

VH(BR)

WSF

## **SATURDAYS**

Cricket National ECB "Allstars" Programme  
 (Ages 5 to 8 + 9/10 Yr old 'Softball' Players)  
 Starting 22nd May 9.15-10.15 (8 week course) YPF  
 Cricket U11's "Intermediate Ball" and U13's  
 "Hardball" Practice/Friendly Matches.  
 Starting 15th/22nd May 9.30-10.45 YPF

## **SUNDAYS**

Explorer Scouts 14-18 yrs 7.00-8.30pm WYCC

## **EVENTS**

### August

29th Carnival Quiz 7.30 Wharf

### September

4th Gingo WYCC  
 7th GN Coffee morning VH  
 11th Community Fair Playing field & Manor

## **VENUES:**

VH(BR)

CSR

VH(BR)

VH(MH)

VH(BR)

WSF

WYCC

VH(BR)

VH(MH)

VH(BR)

VH(MH)

WYCC

WYCC

WYCC

WYCC

VH(MH)

CH Church  
 CSR Chapel School Room  
 PSM Pre-School Mobile  
 SCH Welford School  
 VH(BR) Village Hall Billiard Room  
 VH(MH) Village Hall Main Hall  
 WSF Welford Sports Field  
 WYCC Welford Youth and Community Centre  
 PP Pocket Park  
 LUT Lutterworth College  
 MH3G Market Harborough 3G  
 GUIL Guilsborough School Hall  
 LS Lawrence Sheriff School  
 LC Lutterworth College  
 NKA North Kilworth All weather  
 NSC Naseby Sports Court  
 WTC Welford Tennis Club  
 YPF Yelvertoft Playing Fields

For further information or to have your dates listed please contact Geoff Newman on Tel 575335  
 Keep up to date with events or advertise on [www.welfordvillage.co.uk](http://www.welfordvillage.co.uk) or follow @Welfordvillage on twitter