

THE WELFORD BUGLE

Issue No 279
February 2021

Next 'Copy' Deadline
26 March 2021

I received one of the Christmas boxes from the Welford volunteers, Thank you. I do not know who put my name forward, but I am grateful to them.

I would also like to thank the Luncheon club for the box of biscuits.

I would not like to forget the St. Thomas Charity for their annual gift, plus all the people that give their time to help all of us.

God bless you all.

Alan Partridge.

Community Christmas Boxes - an update

We would like to say a huge thank you to everyone who donated a festive box for our project this Christmas. We were absolutely overwhelmed by the generosity of people in the village from whom we received 45 boxes to distribute to deserving members of the community. We were also lucky enough to receive a grant of GBP 250 from Western Power as part of their *In This Together* scheme which meant we were able to bring the total number of boxes up to 80. The aim of this project was to spread a little festive cheer at the end of an unusually tough year and judging by the reaction from recipients of the boxes, it did just that. Thank you so much to everyone who was involved in the project, we are very grateful for your support.

Hannah Bedard & Niamh Bland

On behalf of the Welford members of the Welcome Club, I wish to thank the Welford Volunteers for the wonderful Christmas boxes they gave to us. It was a little piece of Christmas joy after a difficult year and a lovely surprise.

Marian Wright
Welford Welcome Club
President.

What a wonderful village Welford has proved to be. We came here in 1973 and from the start we have found such friendliness and caring, that has made it a complete joy to live here.

Now more than ever we are all living in very troubled times, but once again Welford has risen to the challenge. Many people have ensured that there is at least one person for each street, who will help anyone who needs it, eg transport to Doctors, shopping, etc, if they can possibly manage it, and this must be so helpful for many people.

This brings me to a heart-warming happening that took place at Christmas. The Welford Volunteers delivered scrumptious boxes (all with Christmas wrapping paper) to various people, round the village, containing all sorts of delights to eat and enjoy.

We received such a one, and would very much like to THANK whoever sent it. What a lovely idea it was and must have made such a difference to many peoples' Christmases.

Thank you, all of you, and thank you to all the scouts who delivered cards round the village and god bless and keep you. Very sincerely. John and Anne Dunn

*Thank
you*



As a proud recipient of a very tasty goodie bag delivered by a member of the Welford Volunteer Group, I would first like to say thank you to whoever nominated me but mostly I would like to say thank you to, and express much appreciation of, the members of the Welford Volunteer Group. Their work, much of it unsung, has been a vital part of Welford surviving and even thriving during the past nine difficult months. All of us, and there are a good many, have benefitted, either directly or indirectly, from your efforts. So a great big THANK YOU and very best wishes for 2021. Whilst I hope your efforts will not be needed for long, may the goodwill and community spirit you have created continue long into the future.
Ann Thorington Dec 2020

You can also read the Bugle online at: <https://www.welfordvillage.org.uk/>



POLICE: 101 or 999

EMERGENCY NUMBERS

STREET DOCTOR: 0300 126 1000, (select option 4)

'Copy' and advertisements for the next Bugle should be sent to: welfordbugle@outlook.com
Or directly to Sheila Scullion, 32 Wakefield Drive, Tel: 575784, Andrew Parsons, 2 Northampton Rd, 571258
John Nicholas, 25 High Street, Tel: 575422 Susie Bevin, West End Farm, Tel: 575226
TO ARRIVE NO LATER THAN THE 'COPY' DEADLINE MENTIONED ABOVE

Advertisements and Donations handled by Andrew Parsons, 2 Northampton Rd, 571258, welfordbugle@outlook.com

Notes from Welford Parish Council

The Parish Council continues to meet online using Zoom. Residents are welcome to join the meeting and details can be found on the village website at www.welfordvillage.org.uk

The Parish Council is responsible for the park and closed church yard, ensuring the grass verges and play areas are maintained, litter clearance, tree trimming, undertaking repairs to benches and lighting the streets. It also oversees the Pocket Park and supports projects within the village including those associated with the Village Plan.

The Parish Council is consulted on Planning Applications acts as a sounding board for representations from applicants and the public. The Parish Council also maintains the War Memorial and bus shelter. It provides support to the use of the defibrillator and maintains a website for the benefit of the village.

Welford is well known for the many walks around the area and the Parish Council regularly checks the footpaths to ensure they are properly maintained and accessible.

The Parish Council also contributes towards maintain the bus service to Market Harborough and Northampton at a cost this year of £1,679.23

This comes at a cost. For the financial year 2021/22 in order to continue to provide the improvements which will benefit the village and wider Parish, the Parish's portion of your Council tax per household will increase from about £1.70 per week to £1.78 per week for a Band D property.

Finally, the Councillors give of their time freely to ensure that Welford is maintained and improved to ensure that residents and visitors have a village to enjoy. Further information can be seen on the village website at www.welfordvillage.org.uk

There have been issues regarding the sewers and drains for the Millers Lock development. It would appear that some residents have been putting nappies and other large items into the drainage system which caused the pumps at the location to fail. The pumps are not designed to manage such large items and residents are asked to dispose of products responsibly. This would also apply to wet wipes and other household and sanitary items and all villagers should consider this when disposing of products.

The next census is planned for Sunday 21 March 2021. It will be the first digital-first census. It's easy to do and can be done on any device. If you can't get online or need help completing the census online, there'll be Census Support Centres across England. Further details can be found at <https://census.gov.uk/>

Ian Kelly, Clerk to the Parish Council

Donations

The Bugle is dependent upon the kind generosity of its donors and advertisers to cover the costs of producing the Bugle. In order to make best use of the donations received we recognise them here. The editorial committee would like to thank the following people for their donations to help keep the Bugle bugling:

- L Bourton
- B&S Sneath
- I&S Elmes
- E Bond
- G Pitcher
- T Eames
- A Bott
- V Jackson
- F Flores
- A Wing
- V Perkins

JOSEPH MORRIS



South Kilworth
Tel:- 01858 575210

HIGH CLASS FAMILY BUTCHER, FREEZER SPECIALIST AND CATERING SUPPLIERS

All meat locally fed and prepared in our own sympathetically run abattoir.

Visit our website at:-
www.joseph-morris.co.uk

Totty Teas

Old English Tea Shop

At Welford Wharf

Light Lunches, Homemade Cakes and Afternoon Teas. Locally sourced Ice Cream

Dec: OPEN Fri / Sat 11am-3pm for take-aways only (including Christmas Afternoon Teas).

CLOSED: Jan / Feb 2021
reopen mid-March
Tel 01858 575147

www.tottyteas
tottyteas@gmail.com



Welford Mixed Hockey Club are a small, friendly hockey club that are always looking for new members.

We train on a Wednesday evening and a Sunday morning and you can start playing from the age of 5 upwards. All you need are shin pads, a gum shield and plenty of enthusiasm! Please see the back page of the Bugle for more details or call Ant on 575678 or Jules on 575635.

**CATERING - COOK & COLLECT
PRESERVES - TEA PARTIES**



**TEL. DEBBIE: 01858 571104
WWW.GREENSCK.CO.UK**

St. Thomas' Charity

I hope everyone who received a small envelope just before Christmas was able to put the money to good use. I know quite a lot of you generously donate it to a favourite charity.

If you have lived within the Welford parish for more than 3 years and are or will be over the age of 65 before December 21st 2021 you will be entitled to this annual small gift. If you qualify and did not get the gift last year, or newly qualify and would like to be added to our list (there are about a hundred recipients at the moment) please contact :-

Sue Nicholas on 575422 or
s.e.nicholas@btopenworld.com

and we will add you to next December's group

**WELFORD
GARAGE**

**NORTHAMPTON ROAD
Tel: 01858 575396**

Opening Hours

Monday-Friday 7.30am-7.00pm
Saturday 8.30am-6.00pm
Sunday 9.30am-5.00pm

PETROL, DIESEL, PARAFFIN, CALOR GAS

**Servicing, M.O.T. and repairs
Undertaken**

**LICENCED AIR CONDITIONING
SERVICE AVAILABLE**

**MOTOR ACCESSORIES + PRE-PACKED
COAL AND COKE**

**Eggs + Milk + Potatoes and
General Groceries**

CONFECTIONERY + SOFT DRINKS

Sandwiches and Pasties

CAR SALES

On behalf of Welford Pre-school, we would like to thank the village for the overwhelming support and generosity shown at our Christmas Windows event. We raised an incredible £605 and these much-needed funds will be used to buy new supplies and resources for the children.



While it is understandably proving impossible to plan anything concrete right now, plans are afoot to hold another Street Market sometime in the Spring and we promise Gingo will return as soon as it possibly can. For now, please just watch this space!

Vaccination

Many of us have now been vaccinated and everyone who has had their jab seems to be really grateful. Charities have had a very difficult year, and I have heard a suggestion made that everyone vaccinated might like to give £10 to a charity of their choice. This idea struck a chord with me, so have sent £10 to Shelter.

S.B.

Thank you

Thank you to the lunch club for the beautifully wrapped parcels of Christmas goodies which all members thoroughly enjoyed. We all hope we can soon be back enjoying delicious lunches together, but it was so nice to be remembered at Christmas.

Thanks also to the Welford Volunteers who prepared lovely boxes of home-made jams and chutneys as well as lots of other delicious goodies, which were a wonderful surprise for all the fortunate nominated recipients. The Volunteers have been such a help to so many of us over the last difficult year. It was a wonderful idea, and so many of us are so grateful for all their willing kindness and help.

As we were unable to enjoy our usual sociable Welford Christmas it was so good to know that people were thinking of us all.

**KELVIN BROAD
PLUMBING HEATING
ELECTRICAL**

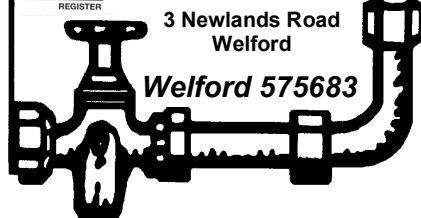
24 hr Emergency Service



**FREE ESTIMATES
All Work Guaranteed
References available**

**3 Newlands Road
Welford**

Welford 575683



Nature Notes

It's very difficult to sum up the outside world at the moment. We have snow and ice for a few days, then a mild spell, then yet more rain to make the fields and gardens yet muddier and outside work even more impossible. There are signs of hope. Aconites, snowdrops and hellebores are bravely flowering, and persisting in looking fresh and delicate, surviving snow, ice and wind. On the occasional mild day one is tempted to try a bit of gardening. Our red and black currant bushes had ceased to fruit, so we ordered new ones and they arrived bare rooted and are now settling into their new site. I don't suppose they will produce much this year, or the new raspberry canes which have been in for some weeks, but gardeners are always planning for the future. In the same spirit I have planted sweet peas. The broad beans planted in the autumn are growing slowly and gradually turning greener. That may be stronger light as the days lengthen, but they did look unhealthily pale for some time. We also live in hope of a first feed of rhubarb quite soon. It looks promising. The purple sprouting broccoli is protected in a splendid cage so that we, rather than the marauding pigeons, get to eat it.

All the water courses in the village were overflowing at one stage. They are still pretty full, and the ditches that have been cleared are flowing well. The sheep still in the fields have plenty of grass, but the gateways are deep mud. After the snow sheep tracks created a pattern all over the fields - they obviously walk a lot in search of the next morsel. You could also see where they slept and, from the droppings, which way they were facing. There were lots of other tracks too, but the snow was too soft for these to be clearly identifiable. There are lots of badger paths through the hedges.

The bird feeders have kept us well entertained. We have seen a spotted woodpecker, lots of blue tits and coal tits and the occasional long tailed tit, robins, wrens and of course sparrows. Several blackbirds are fighting for territory, and the pigeons and jackdaws strut about under the feeders to pick up anything that comes their way. They say the birds find their mates on Valentines day, so for nature spring is in the air. Let's hope the weather soon feels that way too!

Susie Bevin

SPRINGFIELDS LOCAL VILLAGE SHOP, POST OFFICE & NEWSAGENTS

High Street, Welford
Groceries, Dairy, Fresh Meat,
Fruit & Veg, Wines & Spirits,
National Lottery,
Fresh Bread Daily
Tel 575666
SUPPORT YOUR LOCAL STORE



PLEASE CONTACT THOMAS
FOR A NO OBLIGATION FREE QUOTE:

07525064220

twlandpservices@outlook.com
www.twlandpservices.com

Offering a wide range of Hard and Soft Landscaping

Fencing & Repairs - Garden Maintenance & Clearance
Tree & Hedge Pruning - Turfing
Driveway Installation & Maintenance
Patio Installation & Maintenance - Decking
Timber Cabin, Shed, Stable and Garage Builds
Ponds & Water Features - Concrete Bases
Household Repairs & Maintenance



Open to the Public

Golf Course, Driving Range, Tuition

Bar & Restaurant - Open All Day

Event & Conference Facilities

T: 01858 575 082

E: admin@kilworthsprings.co.uk

W: www.kilworthsprings.co.uk

Joke Corner

Q: What's the best thing about Switzerland?

A: I don't know but the flag is a big plus

Q: Did you hear about the Mathematician who is afraid of negative numbers?

A: He'll stop at nothing to avoid them

It's election time for Welford Parish Council Thursday 6th May 2021.

Are you:

- ✦ passionate about your community?
- ✦ keen to keep Welford as a great place to live?

can you think, listen and act locally?

If you can say YES to the above, as a councillor

- ✦ you will be supported in your role
- ✦ will be expected to undertake training
- ✦ have a positive outlook
- ✦ willing to work as part of a team

Official application forms, called nomination papers, will be available from the Clerk to the Parish Council, Ian Kelly clerk@welfordvillage.org.uk. Nominations will need to be submitted by the first week of April and further details will appear on the village website www.welfordvillage.org.uk

Bosworth
Bulbs  @bosworthbulbs

www.bosworthbulbs.com

**Bulbs & Seeds Delivered
to Your Door**



Bulbs | Tubers | Corms | Seeds

Onion Sets | Seed Potatoes
Vegetable Seed | Fruit Trees

Free Delivery to Welford (NN6)

Rubbish! We have all heard that here has been an unusual amount of fly tipping during the Covid crisis. David Miles sent this picture of a mound of rubbish dumped in Calvert's Lane, left immediately after the A14 bridge. Who left it there and who is expected to clear it up?!

This was followed by a phone call from Nick Read. He and his wife Teresa have been troubled by the amount of litter they have seen on their walks locally, and decided to do something about it. They cleared a lot of bottles on the road down to Hemploe Corner and then set about the A50 and the lay by, and contacted the council to collect the huge amount they found. This set me thinking, so I sent for a litter picker and have so far collected 3 large bags between my house and the corner and have set off up the South Kilworth road. It is amazing what one finds. dozens of crisp packets, plastic and glass bottles, takeaway plastic trays, cigarette packets, drinks beakers and straws, plastic bags, bits of cars and bicycles, foil chocolate wrappers, discarded masks and all sorts of detritus. As I walk along, eyes sweeping the verge, there is a piece of litter every few feet. All this is gradually degrading into tiny particles which will pollute the soil and, when it gets in the ditches, the water courses, for far longer than our lifetimes.



Firms are slowly converting to compostable packaging, but it is still very far from the norm. We live in wonderful countryside. Why would anyone want to pollute it? I am sure it is mostly thoughtlessness, but the time has come to start thinking. I can't see the rubbish for snow at the moment, but will be back out on my mission when it melts. Mel and Chris do a great job in the village, and I have long admired their efforts, but the problem is countrywide. S.B.

Advertising in the Bugle

For all contacts regarding advertising in the Bugle please contact Andrew Parsons (Prospect House / 2 Northampton Rd) 571258 - or email the Welford email account: Welfordbugle@outlook.com.

BELL RINGING PRACTICE :



1st. and 3rd. Monday each
month, 7.30pm. to 9.00pm.

New ringers always welcome.

Chris Hubbard

PLASTERING SERVICES

All Plastering Work Undertaken

Internal & External Work
Overboarding • Over Skimming
Coving • Drylining • Re-plastering
Damp Proofing

Specialising In Insulated Conservatory Ceilings City & Guilds Qualified
(Space Age Quilt Used)

For a Free Quotation Call Chris on
07731 488 159 • 01858 575039

No Job Too Large Or Small

Churchyard extension mowing for 2021

As usual at this time of year I am asking if there is anyone who will volunteer to help mow the churchyard extension. We have got a team who I hope will continue to do their usual slot on the rota, but there are spaces, so if you would like to help, and release some of us doing more than one time slot, please contact John or Sue Nicholas on 575422 or

s.e.nicholas@btopenworld.com You can do a quarter area for about a 6 week time slot or the whole area for a 2 week time slot. (That usually means you only need to mow it once.)

If you feel the time has come for you to retire from mowing, we will miss you, but I thank you for your efforts over the past however many years you have been doing it. Just phone me and I will take you off the rota.

The good news is we will have a new mower which should make the job a lot easier this year! There is a certain satisfaction when you have made the churchyard tidier and looking better,



ACCA Qualified Chartered Accountants

Providing professional services covering a range of areas

Book – keeping

Accounts

Payroll

Construction Industry Scheme

VAT

Limited Company Formations

Capital Gains Tax

Self-Assessment & Partnership Returns

Business consultancy & advisory

Telephone: 01858 571197

Email: info@beagleaccounting.co.uk

Website: www.beagleaccounting.co.uk

23a High Street, Welford, Northamptonshire,
NN6 6HT

BUGLE NEWS

The Bugle is here to let everyone in Welford know what is going on in the village and appears early in February, April, June, August, October and December. Letters and articles for inclusion are always welcome.

It saves paper and some time in putting the issues together if articles are presented if possible as emails. They can be sent as attachments in MS Word and can then be easily used.

However don't worry if hand written paper is your preference, it is still welcome. So, if you have an item which you would like published, if possible email it to: welfordbugle@outlook.com

If you are unable to e-mail then you can find our postal addresses on the front page.

Please ensure any articles are received by the copy date on the cover. Thanks.

Andrew Parsons



TRIBES

Massage . Wellness

EXPERIENCE YOUR HEALTH BOOST

Exclusive To Welford Residents

Offer Open To New Clients Only

Enjoy Up To 50% Off

07400 112 510

health@tribemassage.com

www.facebook.com/tribemsg



Jon Smurthwaite Bookkeeping

Providing flexible, friendly & professional bookkeeping and accounting services to local people and businesses.

Tel: 07887 585217 / 01858 575842

E-mail: info@jonsbookkeeping.co.uk

Website: www.jonsbookkeeping.co.uk

Jonathan Smurthwaite FCA
43, The Leys, Welford, Northamptonshire, NN6 6HS

PW RURAL SERVICES

Paddock Maintenance and Stable Repairs

- Paddock & Estate Maintenance
- Stable & Field Shelter Repairs
- Fence & Gate Repairs
- Grass Cutting & Topping
- Chain Harrowing & Rolling
- Fertiliser & Grass Seed Spreading
- Overgrown Paddocks Cleared

Peter Wattam

Mobile: 07860 524642

Email: peterwattam6@gmail.com



The Mystery of the Coats of Arms at St Mary's

Have you ever wondered what the thirty Coats of Arms located on the walls in the Chancel of St. Mary the Virgin church in Welford represent? Many people have asked whose shields they are and why they are there, but as there were no records no one could give the answer.



Well, we now have the answer, although it has taken over 30 years to find it. Back in the 1980s Victoria Morson, a member of the choir, was paying more attention to the shields than to the sermon and thought that they were very faded and needed some attention. After the service she suggested to John Haynes, the churchwarden and accomplished amateur artist, that they needed repainting. John accepted the challenge and over the following months they were all returned to pristine condition. But still no one knew what or why. Fast forward to last year, and Victoria, now Johnson and a member of the Welford Historical Society, still wanted to know the answer, so she sent photographs to the College of Arms asking if it could help. Bingo, she was contacted by a gentleman with the title of Lancaster Herald of Arms, Official Genealogist for the Imperial Society of Knights Bachelor, who thought he could help, but it might take him some time. In fact, the task turned out to be easier than he thought, as he found that all the shields were the Coat of Arms of the Bishops of Oxford from 1542 until 1869. The connection being that during those 327 years the Parish of Welford, along with others in the area, came under the jurisdiction of the Diocese of Oxford.

Of the thirty bishops some have left their mark on history more than others. Robert King, for instance, previously a Cistercian monk became the first Bishop of Oxford in 1542, following the dissolution of the monasteries. He was appointed by Henry VIII when the diocese was created out of the ancient Diocese of Lincoln. He was followed by Hugh Corwen in 1567, previously Archbishop of Dublin. He approved of Henry VIII's marriage to Anne Boleyn and declared himself a protestant when Elizabeth I came to the throne and was subsequently disavowed by the Irish Church. Another was John Bridges, bishop from 1614 until 1618, who coined the phrase "A fool and his money is soon parted".

Two of the shields have a circular Latin Band from the arms of the Order of the Garter. The first to receive this insignia was Richard Bagot, bishop from 1829-1845, and the first Bishop of Oxford to become Chancellor of the Order of the Garter. He married into the Villiers family and his wife's nephew lived at Sulby Hall, and who later rebuilt the north aisle of Welford church. The second was Samuel Wilberforce who was bishop from 1845 through to 1869. He was son of William Wilberforce and together they championed the abolition of the slave trade. His is the last shield displayed, as churches in this area then left Oxford and joined the Diocese of Peterborough.



Now that it is known what and who the shields represent, we realise that they are not positioned in date order, but that is the next challenge!



MM

SimplyBePilates

Looking after yourself

Classes are still running via Zoom

Beginner & Intermediate slots now available due to extra classes

*Private Sessions also available
GP Referral/Cancer
Rehabilitation/Osteoporosis
General Pilates
(Qualifications held for all)*

*For more information:
Contact Anne on 07738119606
anne@simplybepilates.co.uk*



FINANCIAL & MORTGAGE ADVICE

I OFFER A FREE INITIAL MEETING TO SEE IF I CAN HELP WITH;

NEW MORTGAGES OR A REMORTGAGE
EQUITY RELEASE & LIFETIME MORTGAGES
PENSIONS (INCLUDING SHARING ORDERS)
LIFE, CRITICAL ILLNESS AND INCOME
PROTECTION INSURANCE
INVESTMENTS INCLUDING ISAs

Tom McCullagh
Tel – 01858 575121
Mob – 07880 963016

tom@tomccullaghfinancialservices.co.uk



Positive Solutions is a trading style of Quilter Financial Planning Solutions Limited, which is authorised and regulated by the Financial Conduct Authority.

www.tomccullaghfinancialservices.co.uk



Happy Feet

Registered Foot Care Specialist



- Toe nail cut
- Corns
- Verrucas
- Ingrown toe nails
- Hard dry skin
- Fungal nails

**Home appointments
07842 266575**

www.happyfeetmidlands.com

Welford and Sulby Historical Society

Remembering Thomas Griffin, 1878-1899

We came across this report in the Daily Telegraph of Tuesday 18th April 1899.

HEROES OF TOIL: A LABOURER'S NOBLE DEATH

A touching story, almost identical with the tale of Stoker Lynch's heroism, came out at an inquest held at Battersea Coroner's Court last evening. The man into whose death Mr Walter Schroder held the inquiry was a fitter's labourer named Tom Griffin, aged twenty-one, who was scalded to death at work on Wednesday last. His marriage was to have taken place on the following Sunday.

A native of Welford, Northamptonshire where he will be buried, he was employed at Messrs. Garton, Hill and Co.'s sugar refinery, York-place, Battersea, and lived at 75, Usk-road, Clapham Junction. Frederick Biggs, the engineer to whom deceased was assistant, declared that a better labourer than Griffin he could not wish to have. The evidence showed that Griffin was changing his clothes in the boiler room on Wednesday morning when Biggs went in the room adjoining to let some water out of a pipe. The main steam pipe gave a slight jar, and something knocked the engineer into the corner of the landing. Biggs, being of opinion that the steam pipe had burst, got out of the room as promptly as he could.

Immediately the noise of the explosion reached the hydraulic room. Woodman, an engine driver, who had been employed at the factory for thirty years, shut the door which communicated between the two rooms, and told the men present, including the deceased, on no consideration to go out except through the window. Woodman, who was waiting for Biggs to turn the water off when the steam-pipe exploded, saw a great rush of steam, and, having turned off the main steam valve, put a sack over his head and left the building.

At this time, according to the evidence of Samuel Tippler, a labourer, who was changing his clothes with Griffin, the steam was coming under the boiler door. After Woodman told them not to go out, Griffin stood still for a few seconds. Then, exclaiming, "My mate, my mate," he rushed through the steaming doorway along the passage, and into the engine-room, which was full of steam. "Then somebody," went on Tippler, "ran against the wall and staggered into the yard. We rushed after him and found it was Griffin. He had been dreadfully scalded. Had he remained where he was he would have been in perfect safety."

Excellent "first aid" was rendered to the poor fellow, according to the medical evidence, but he was scalded practically all over his body, and he died from shock and exhaustion within a few hours of his admission to the Bolingbroke Hospital, Wandsworth-common.

The Coroner said there could be no doubt that the deceased met his death through searching for his mate, who happened to be in a place of safety.

The jury returned a verdict that the deceased was killed through the bursting of a steam pipe, and that he died at his post as a hero in trying to rescue his mate, the said death being due to misadventure. They also expressed their condolences with the relatives of the deceased. His father, William Griffin, was present to identify the body. He said he had a letter from his son the night before the accident.

Mr Harper, who appeared for Messrs. Garton, Hill and Co., said his clients fully realised the deceased's splendid conduct, and the high motive which prompted him to act as he did.

The Coroner: The conduct of a man like him deserves to be recorded. No doubt there are heroes in everyday life, but they do not come to the front, so we do not hear of them.

Thom Griffin's simple cross gravestone is in the graveyard extension.

Welford and Sulby Historical Society meets monthly (under normal circumstances) but we currently only exist on-line at our Facebook page where we welcome new members.



School News from WSSES...

Well, here we are again! Sadly, school is closed once again to most pupils, and we are once again getting used to a very different way of working. The last few weeks have seen the introduction of two new ways of learning remotely, which are designed to enable our children to have more interaction with their teachers and friends, submit work, get feedback and experience some 'live' teaching from home.

We have had a fantastic response to our new learning platform 'Seesaw' from pupils and parents. Pupils are able to access recorded explanations and listen to stories read by their teacher, and submit their work in a range of ways including photos, videos and written responses. It has been great to see the interaction between the older pupils when discussing their class novel, and the teachers have loved receiving videos of reception and key stage one taking part in their home learning activities. We are gradually moving most of our remote learning over to the Seesaw platform, which has the advantages of more interaction with the class teacher but without the pressure of needing to be 'logged in' at a specific time. This means that families who are sharing devices or fitting home learning around their own work commitments can access the work at a time that is convenient.



We have also now delivered our first live sessions via Microsoft Teams, where children are experiencing a lesson delivered by their teacher in the same way they would in the classroom. We have been very impressed with how many pupils managed to access these sessions, and how successful they were – clearly all the time and effort that has gone into improving our broadband speed over the last few weeks has not been in vain, since with the exception of a few minor technical hitches, all lessons went really well. It was wonderful to see the children and they enjoyed the opportunity to have something more in line with the real classroom experience.



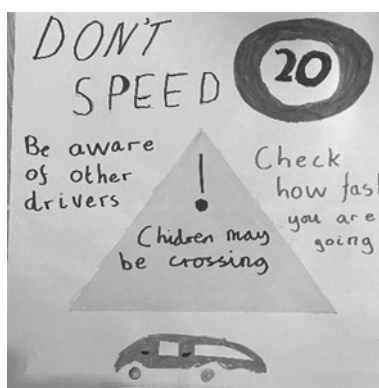
We have been so grateful for all the support from parents over the past few weeks, who have also had to switch their own lives over to remote learning with very little notice. We really hope to all be back together in the classroom soon, when it is safe to do so.

Road Safety Competition

Back in November, Welford Parish Council invited pupils in school to enter a road safety poster competition to help highlight some of the traffic issues that are experienced on West Street. The quality of entries was so high that the panel of judges decided to award 1st and 2nd place prizes to the two best entries in Woodpeckers, Robins and Kestrels classes. You should soon see some of the posters appear on West Street, to encourage pedestrians and drivers to use the road safely. The winners and runners up were:

Winners: Nancy Commons, Arthur Midmer, Iris Parsons **Runners up:** Mayvee Swain, Joshua Cuoghi-Jackson and Edward Martin. *Well done to all of you.*

Rachel Sida





WELFORD RAINFALL IN MILLIMETRES



	2011	2012	2013	2014	2015	2016	2017	2018	2019	2020	2021
JAN	41.5	46.5	58.0	119.0	59.5	81.0	59.0	68.0	26.0	51.5	117.5
FEB	54.0	23.5	42.0	74.0	41.0	43.0	59.5	29.0	31.0	121.0	
MAR	7.5	27.0	62.0	43.5	27.0	78.5	54.0	166.5	55.5	35.5	
APR	5.5	155.0	22.5	31.0	25.5	50.0	10.5	65.0	15.0	35.0	
MAY	31.5	55.5	75.5	109.0	54.0	45.0	80.0	85.0	46.5	10.0	
JUN	59.0	135.5	41.5	69.0	26.0	77.5	52.0	1.0	148.5	66.0	
JUL	41.0	99.0	92.0	31.0	81.5	19.0	71.0	14.5	125.0	63.0	
AUG	53.0	94.5	51.0	95.5	53.0	56.0	78.5	52.5	79.0	140.0	
SEP	20.0	51.5	26.0	8.0	50.5	45.0	79.0	36.0	89.0	28.5	
OCT	35.5	72.0	113.0	73.0	60.0	35.0	21.5	46.0	153.0	153.0	
NOV	36.0	127.5	39.5	82.0	65.0	79.5	44.0	40.5	132.0	62.0	
DEC	64.5	135.5	51.5	54.0	75.0	24.0	100.5	67.5	100.0	139.0	
TOT	449.0	1,023.0	674.5	789.0	618.0	633.5	709.5	671.5	1,000.5	904.5	117.5

Minimum for a particular month

Maximum for a particular month

FLAGS

FEBRUARY 2021

6th Queens Assession

17th Ash Wednesday

MARCH 2021

10th Earl of Wessex

28th Easter Week



Welford Volunteers

At the start of the lockdown, a network of volunteers was set up in the village to ensure that everyone who needs it has a point of contact and support during this difficult and uncertain time. We have been pleased to be able to help out those of you who have already contacted us, and many ongoing support relationships have been established with help offered such as trips to the supermarket or post office, prescription pick-ups, dog walking, weekly phone calls and so on.

We are now in the midst of the second lockdown and while this one is not as strict as the first, we are still here and happy to assist with anything that will make life a little easier in these tricky times.

How to get support?

If you do need help from us then please call the person who is coordinating your part of the village using the phone numbers **ON THE BACK OF THE BUGLE**. If you cannot get through to them for some reason, please call any of the other contacts on the list and they can assist. Alternatively, send an email to:

welfordvolunteers@gmail.com

and we can connect you to someone who can help out.

If you have any questions please contact Hannah Bedard 07493 638762 (welfordvolunteers@gmail.com)

Hannah Bedard

WELFORD ON THE WEB

You can read The Bugle on the Welford Web Site, as well as all sorts of interesting things about the village, by clicking onto : - www.welfordvillage.org.uk And twitter on [@WelfordVillage](https://twitter.com/WelfordVillage)



HANNAH

— BEAUTY THERAPY —

COLLINS

BY APPOINTMENT ONLY

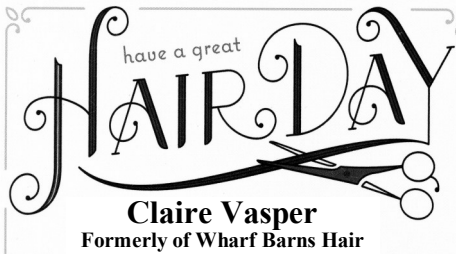
T : 07736 939993

hcbeautytherapy.co.uk

A Unique One-to-One
Personal Beauty Experience

42 High Street - Welford

New salon open in Brixworth



Claire Vasper
Formerly of Wharf Barns Hair

07949 404519
clairevasperhair@gmail.com

*A piece of Love
Quilting*

*...has a new email address...
apieceoflovequilting@hotmail.com*

*If you have tried to contact me via the old
address and I haven't replied, please forgive me
and try this new one!*

*Visit us on Facebook @apieceoflovequilting for
more details*

Bliss & Beauty
The Complete Skincare Specialists



Bliss & Beauty specialise in skin treatments, but we offer all your usual beauty treatments in our quiet, peaceful barn. With free parking outside the door, and excellent safety measures in place, we maintain a safe environment without compromising on your experience. Head over to our website where you can see some of the measures we've implemented, as well as some of our excellent reviews.

www.blissandbeauty.co.uk

01858 571244 | 07773 235433 | info@blissandbeauty.co.uk | www.blissandbeauty.co.uk
Bliss & Beauty, Dog Lane, South Kilworth, Leicestershire, LE17 6DY

"Like" us on Facebook to keep up to date with our latest news and offers.



It would be lovely to have more of a Welford presence on Facebook because love it or hate it, it is a great way to spread community news and discussions. So, we have decided to phase out the Welford Facebook page as it isn't particularly user-friendly and have instead created This Is Welford - a group for all Facebook-using residents of Welford and the surrounding area. So please join us (do a search for This Is Welford in groups and we'll also put a link on the Welford Facebook page).

Welford book of Remembrance

Just a reminder to everyone that if you would like to remember a loved one in this book in Church all you have to do is write your two or three lines of commemoration and give it to Denise Bott or myself and Denise will enter the words in her lovely clear handwriting, so you will have a lasting tribute to the one you have lost. There is no fixed charge for this, but a small donation to Church funds is always appreciated.

John Nicholas

Stefan and Raymund the Handymen

Quality Woodwork, Plastering, Decorating, Tiling, Brickwork, Fencing, Patios, Decking, Guttering, Flat-pack assembly, General repairs and more...
Not sure it's a job for the Handymen? Just pick up the phone, and ask!

01858 881775

StefantheHandyman@outlook.com

RaymundtheHandyman@outlook.com

Find them on Facebook: @StefantheHandyman @RaymundtheHandyman

JANET FRANCIS-FLORES Bsc (Hons)
Podiatrist/Chiropodist, HCPC Registered.
Home visiting service available.
26 years NHS experience.
Tel: 07792 408205 for appointments.



Gary Matthews

Traditional Mole Catcher,
Farm / Domestic.

Certificated
Moles/Rodents/Rabbits/Wasps.
Welford

01858575552

07787348951





The Welford Youth and Community Centre is available to hire. Located on Welford Park it is a perfect venue for groups to hire and for any type of family gathering. Recent bookings have included **Birthday parties, Wedding receptions, Dance practices and Presentation evenings.**

The comprehensive facilities include a modern kitchen with a cooker and dishwasher, toilets including a disabled toilet, baby changing facilities and a separate meeting room. All of this at a very reasonable hourly rate.

Presently available:

Daytimes – Monday, Tuesday, Wednesday, Friday afternoons and Weekends

Evenings – Tuesday, Wednesday, Thursday and Saturday.

For booking enquiries phone Ant on 01858 575678 or welfordycc@outlook.com

Piano / Guitar / Bass lessons

Many genres offered by composer in Welford.

30 years teaching experience.

Min. 1x lesson per week.

Lesson: Thur (7PM - 10PM) / Sat (9AM - 12PM)

Course **week** durations - 13 (min.) / 26* / 39* / 47*

* = discounts offered - more weeks taken - course payment in advance

Contact Phill at 07739-470-469 or welfordmusiclessons@icloud.com



gp gardening services
tree surgery · garden maintenance · fencing

Greg Palmer

m 07814 401 244
t 01858 571 093
e gregpalmer21@hotmail.co.uk
ws www.gpgardening.com

JR BESPOKE PROPERTY RENOVATIONS



JLR Bespoke Property Renovations are an experienced and trusted Project Management and Construction team based in North Kilworth, Leicestershire.

If you have a project or idea in mind, please don't hesitate to contact us either by phone or via our website.
Tel: 07866 741 261 (Jason Wright)
www.jlrbespokeproperties.com

Open in school holidays

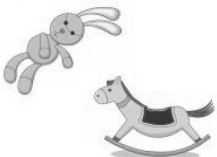



First session free!

WELFORD BABES AND TOTS

Stay and play with your little one, meet other parents and carers, refreshments provided for you and your children, lots of fantastic toys. Expectant mums and newborns welcome!

Fridays, 9.30am – 11.00am
Welford Youth and Community Centre
£2.00 first child, 50p additional children, free for pre-crawlers and adults



 Welford Babes and Tots
Contact: Lucy on 07891287626 or Claire on 07837852364 or Helen on 07585669897

Seasoned Hardwood & Kiln Dried Firewood, Coal & Kindling.

Sourced from Local Sustainable Woodlands
FREE, Fast, Friendly & Reliable Delivery Service
Carried and stacked in a location of your choice.

Contact: Mark 07813 103995

Email: whmestate@btinternet.com
or website: www.whmestate.com

Barry Jones

Stonebridge House

Back Lane

Shearsby

Leics LE17 6PN

Tel: 0116 247 8077

Mobile: 07831 474700

 Electrical Contractor

- + No job too small
- + Free Estimates
- + Reasonable prices
- + All work guaranteed

5 FACTS ABOUT DOG MESS WE ALL NEED TO KNOW:-

1. Dog mess can lead to toxocarasis in humans, which can lead to blindness, especially in young children, it can also migrate to the lungs, liver and brain so is a serious issue but rarely encountered luckily.
2. Dog mess can lead to Parvo, a potentially fatal disease in dogs. It is often fatal in young unvaccinated puppies or those that are walked outside before finishing their vaccination course.
3. Dog mess can cause cows to abort their calves due to the parasite neospora caninum. When infected a cow becomes untreatable, they will either abort their calf or produce a daughter who will be a carrier and will abort her future calves. Sadly because of this culling is the only solution.



4. Dog mess can transmit diseases to sheep which can be fatal. A larvae develops in the sheep's brain causing coenurus cerebralis.

5. It is an offence not to pick up your dog's mess.

You would think that all of the above would be enough to make people pick up after their dog, but unfortunately this doesn't seem to be the case at the moment with frequent piles of poo everywhere!

Most dog owners are responsible but there are a few giving all the rest a bad name—please don't be one of them! IT IS IMPORTANT THAT DOG MESS IS PICKED UP FROM STREETS AND FIELDS! PLEASE KEEP OUR CHILDREN AND ANIMALS SAFE!

Professional hair styling in your own home

hair by **J**ulie

Call Julie Bentham on:
Tel: 01858 575675
Mobile: 07891 426055

framesi WELLA
FREELANCE HAIRDRESSERS' ASSOCIATION **FHA**

JJ's Kiddycare

- 'OUTSTANDING' Ofsted grading
- Funded pre-school sessions for 2,3 & 4 year olds
- Full day care for 0-5 years
- Situated on a farm site between South Kilworth and Welford
- After school clubs (4-14 years)
- Holiday Clubs during all Leics and Northants hols

www.jjs-kiddycare.co.uk Tel. 01858 575642
admin@jjs-kiddycare.co.uk

Ofsted Outstanding 2013/2014
Early years provider

F & W Plumbing & Heating Services Ltd
North Kilworth, Lutterworth, LE17 6HX
Bespoke Bathroom & Kitchen Design & Installation.
Over 30 years experience in Designing and Installing Contemporary to Traditional Kitchens and Bathrooms.

Plumbing | Joinery | Plastering | Electrical | Decoration | Floor & Wall Tiling
Gas Safe Reg. No 75883 | Hot & Cold Water System Upgrades | Boiler System Upgrades
Call Jason for Free Quotations | Ideas & Inspiration on 07866 741261.
Email: jayspanner@btinternet.com
Professional | Committed | Competitive | All Work Guaranteed



Highgate House
Hotel | Meetings | Events

HIGHGATE HOUSE IS OPEN!

We are excited to offer a new all day menu including:
Breakfast | Brunch | Lunch | Afternoon Tea
| Dinner

SEE OUR MENUS & BOOK:
WWW.SUNDIALGROUP.COM/HH-ALL-DAY-DINING

HIGHGATE HOUSE, GROOMS LANE, CREATON, NORTHAMPTON, NN68NN

WHAT'S ON IN WELFORD

(All currently subject to the situation relating to the Corona virus)

MONDAYS

Yoga for All 10.00-11.30am VH(MH)
 Bell-Ringing 1st and 3rd week 7.30pm CH
 Rainbows 5-7 years 5.15 - 6.00pm WYCC
 Brownies 7-10 years 6.15 - 7.30pm WYCC
 Guides 10-14 years 7.30 - 9.00pm WYCC
 Table Tennis 7.00-9.00pm VH(MH)
 ISE Group (Stitch & Expression) VH(BR)
 10.00-4.00 2nd in Month
 Welford in Harmony 7.00—9.00pm WSF

TUESDAYS

Doctor's Surgery 9.00-11.30am VH(BR)
 Pilates 9.30-10.30am (zoom during Covid) WYCC
 Pilates 7.00-8.00pm (zoom during Covid) WYCC
 GN Coffee Morning 1st week VH(MH)
 Short Mat Bowls 7.00-8.30pm VH(MH)
 Bridge 7.30-10.00pm (1st and 3rd weeks) VH(BR)

WEDNESDAYS

Welford Watercolourists 9.00am-12.00 VH(BR)
 Ladies Fellowship 1st and 3rd week 2.30pm CSR
 Welcome Club 2nd week 2.00-4.00pm VH(BR)
 Yoga for All 7.30-9.00pm VH(MH)

WEDNESDAYS (Continued)

Gardening Club 2nd week 7.00-9.45pm VH(BR)
 Football — Welford Vets 7:30-8:30pm WSF
 Hockey Training: Secondary & Adults 1920-2030 LC

THURSDAYS

Doctor's Surgery 9.00-11.30am VH(BR)
 Dancing for Fun 9.45-11.30am VH(MH)
 Pilates 6.00-7.00pm (Zoom during Covid) WYCC
 Parish Council 4th week 7.30pm VH(BR)
 Women's Institute 2nd week 7.30-10.00pm VH(MH)

FRIDAYS

Babes and Tots 9.30-11.00am WYCC
 Beaver Scouts 6-8 years 5.00-6.00pm WYCC
 Cub Scouts 6.15-7.15pm WYCC
 Scouts 7.30-9.00pm WYCC
 Dancing for Fun 7.00-8.30pm VH(MH)

SATURDAYS

Football – reception & Yr 1 9.30-11.00am WSF

SUNDAYS

Hockey Training: Primary & Newbies 10-11am NPF
 Explorer Scouts 14-18 yrs 7.00-8.30pm WYCC

Welford Volunteers

Area	Name	Contact Number
Roundhouse Close/Millers Road	Abi Kirk Niamh Bland	07742 434321 571174 or 07837 579550
Browns Meadow	Lucy Stawt	07725 848231
Newlands Road	Ellen Worrell	07857 019775
High Street lower (shop to bottom of hill), Orchard Terrace	Sue Nicholas	575422 or 07879 852849
High Street upper (shop to Church Lane), the Paddocks, Abbey View	Lee Gravestock	07954 417817
Northampton Road/ Woodford Glebe	Mandy Cant Hannah Collins	575536 or 07944 516439 07736 939993
Church Lane	Sheila Scullion	575784 or 07484 883433
West Street and West Court	Tania Hall	575917 or 07713 255696
Wakefield Drive	Sheila Scullion	575784 or 07484 883433
West End, Hall Lane, Hemploe View	Hannah Bedard	07493 638762
Salford Close, Dovehouse Close	Suzanne and Isabel Howells	575411 or 07775 451148
The Leys and Christopher Court	Kathy Cox	575806 or 07738274201
Westfield Crescent	Kayleigh Riley	07564 991015
Avon Fields	Ruth Leddington	07496 029016
The Hemploe, Court Lane, Elkington Road (off Court Lane)	Bob Finch	07733 326700
Sulby	Andrea Tuck	07960 616150
Naseby Road	Helen Nicholas	571215 or 07917222376

For further information or to have your dates listed please contact Geoff Newman on Tel 575335

Keep up to date with events or advertise on www.welfordvillage.co.uk or follow @Welfordvillage on twitter