

THE WELFORD BUGLE

Issue No 267
February 2019

Next 'Copy' Deadline
22 March 2019

WADS

Present the TV smash comedy



March 27th 28th and 29th

"An evening of Laughter"



Welford Pre-School
presents...

SAVE
THE DATE

gingo

eyes DOWN
bottoms UP!

Join us for an evening of *bingo* with *gin*

SATURDAY 9th FEBRUARY, 7:30PM
LAST YEAR WAS A SELL OUT - BOOK YOUR TICKETS NOW!

Tickets £7.50
Includes hot food and first game



01858 575134
or welfordpreschool@gmail.com

**** Now at the Community Centre**



POLICE: 101 or 999

EMERGENCY NUMBERS

STREET DOCTOR: 0300 126 1000, (select option 4)

'Copy' and advertisements for the next Bugle should be sent to: welfordbugle@outlook.com
Or directly to Sheila Scullion, 32 Wakefield Drive, Tel: 575784, Andrew Parsons, 2 Northampton Rd, 571258
John Nicholas, 25 High Street, Tel: 575422 Susie Bevin, West End Farm, Tel: 575226
TO ARRIVE NO LATER THAN THE 'COPY' DEADLINE MENTIONED ABOVE

St. Thomas' Charity

The trustees of the Charity met as usual in early December and discussed a letter from a recipient of the Charity money saying we should maybe consider changing the age of those who would qualify, and the length of time they had to have lived in the village. After a long discussion it was decided to keep the length of time living in the village at 3 years, but change the ladies qualifying age to 65 the same as the men. If you are a lady in the 60 to 65 age bracket and have received a payment last year and/or previously you will stay on our recipients list and still receive the gift.

We hope all who received the small gift just before Christmas found it useful. If you are not on our list, but qualify by being over 65 years old and have lived in Welford for over 3 years please contact Sue Nicholas on 575422 or email her at s.e.nicholas@btopenworld.com and she will add your name to the list for a gift next December.

Welford Sportsfield Quiz Night and Dinner ???

**At the Community Centre on
Saturday 16th February at 7.30pm**

Our next quiz will be held on the above date. Entry will be £7 for each team member, with a maximum of 6 per team, this includes your food.

Please book your table early to avoid disappointment by calling Adrian Scullion on 575784 or email adrian.scullion@btinternet.com. We know that 16 teams is our maximum so please book as soon as you know you have a team.

Advertisements and Donations handled by Andrew Parsons, 2 Northampton Rd, 571258, welfordbugle@outlook.com

Notes from Welford Parish Council

- Some dog walkers are not clearing up behind their dog around the village. You should use the dog waste bins, general waste bins or should take the waste home. The Daventry District is subject to as Public Spaces Protection Order. Under this order it is an offence to fail to pick up after a dog on land to which the public has access which carries a £100 fixed penalty notice and possible court action which could result in a fine of up to £1000.
- Comments have been made to the Council about an increase in tractor traffic and in particular aggressive and fast driving. If you see this happening can you take a registration number and let the Council know
- The future of the bus service is still uncertain once the grant from Daventry DC ends in March. Discussions are still being held to ensure some sort of service takes place
- The grass cutting contract was agreed and will this year include leaf collection along public footpaths in the autumn
- A presentation was given by Northants ACRE about their work which by working with local communities aims to reduce rural isolation and vulnerability and help to deliver improved services for these communities. More information is available on their website www.northantsacre.org.uk and it will be discussed at the Annual Parish Meeting in April
- The children's play area at the park will undergo repairs to some of the equipment as identified by the Wicksteed company. This is routine maintenance
- There are a number of pot holes around the village. The Council is working with the Highways team to have these repaired, although as you know there are challenges with the County Council budget.
- The recently refurbished Orchard Terrace has had some of the plants stolen. This is a community border and residents are asked to report any incidents to the Police
- The Council is looking at replacing the street lights in the village with LED lamps. These are more energy efficient than the current lights and will reduce the amount paid in electricity.
- The World War 1 Memorial Bench is now in place on the corner of Wakefield Drive looking down towards the Church and the Memorial

Ian Kelly, Clerk to the Parish Council

Have you seen the bench?

The beautiful bench commemorating the centenary of the first World War is here as a result of an offer from Daventry District Council for villages to apply and have a grant towards the bench.

Welford was one of the lucky applicants but the first bench that arrived was damaged which is why it was not installed in time for 11 November. It is sited on the corner of Wakefield drive facing the church as this was the nearest suitable location.

Do go and look at it - it's worth seeing.



T: 01858 575 555

W: www.theatticrestaurant.co.uk

South Kilworth Road, North Kilworth, LE17 6HJ

**JOSEPH
MORRIS**



South Kilworth
Tel:- 01858 575210

**HIGH CLASS FAMILY
BUTCHER, FREEZER
SPECIALIST AND
CATERING SUPPLIERS**

All meat locally fed and prepared in our own sympathetically run abattoir.

Visit our website at:-
www.joseph-morris.co.uk

WILLS PLUS
LEGAL SERVICES

**HAVE YOU MADE
YOUR WILL?**

**You know you should, but
you just can't find the time!**

**We are local specialists,
offering a FIXED FEE
professional Will writing
service in your own home,
at a time to suit you and at
an affordable price**

**Please call 01858 575211
or email:
john@willsplus.co.uk**

Shaw House 12 Church Lane Welford

HEDGE ALERT!

In the last year several gardens in the village including the new build at Newlands Rd have seen hedges removed and replaced with close boarding-often with concrete bottom plates. This stops the movement of wildlife and places for nesting birds. It is against the spirit of the Countryside Act where hedges over 30 years old, bordering countryside or bordering sites of historical interest must have permission for removal. The CPRE are currently lobbying MPs in Northamptonshire and local councils in this area to help clarify the guidance for house holders which does not emphasise enough how valuable hedges are. Welford is at an important crossing point for wildlife in Northamptonshire and increasing urbanisation of the countryside is leading to less sightings of wildlife.

It is important to note that hedge and ditch boundaries are usually in the ownership of the land belonging to the adjoining fields so people enlarging their gardens run the risk of civil disputes as well as infringing the act. Gardens are a haven for wildlife as well so make sure small mammals such as hedgehogs can get under fences by providing escape holes.

Some of our hedge boundaries are not just hundreds of years old but almost a thousand years old. We must protect what we have as that habitat is often irreplaceable. YD

Volunteer Open Day at Kelmarsh Hall & Gardens

Kelmarsh Hall and Gardens are recruiting for volunteers to join the team in a range of volunteer positions, from Hall Stewarding on open days, Learning and Activity events and Gardening in the Grade II* listed gardens!

Kelmarsh Hall is open for visitors and events throughout the year which couldn't happen without the great visitor opening volunteer team. The recently opened Servants Quarters and Old Laundry offer an 'upstairs, downstairs' experience to visitors, along with the chance to explore the beautiful fine rooms on the ground floor.

The Hall also welcomes a number of educational opportunities throughout the year, including school visits, art courses and lecture series, which all involve key volunteer assistance. The beautiful gardens surrounding the Hall are also preserved and maintained by a wonderful team of volunteers.

On Thursday 7th March, from 12pm – 2pm, the Hall will be open to give you the chance to find out more about the volunteer roles from current volunteers and explore all that the Hall and Gardens have to offer.

If you enjoy history, meeting new people and want to learn new skills – a volunteer role at Kelmarsh would be perfect for you!

To find out more information visit <https://www.kelmarsh.com/volunteer-at-kelmarsh-hall>.

If you would like to speak with the Volunteer Coordinator directly email: volunteer@kelmarsh.com or call: 01604686543.

Donations to the Bugle

The editorial committee would like to thank the following people for their donations to help keep the Bugle bugling:

- | | | |
|-------------------------|---------------|-----------------|
| • Gillian Phillips | Tony Eames | Sheila Elmes |
| • Hazel Higgerson | Mrs J Cromack | Linda Bourton |
| • Bill & Shirley Sneath | Geoff Pitcher | Don & Val Raper |
| • Elizabeth Bond | | |

In order to make the most of the donations we will acknowledge them here. Thanks again for your support.

Andrew Parsons

FINANCIAL & MORTGAGE ADVICE

WE OFFER A FREE INITIAL MEETING TO SEE IF I CAN ASSIST YOU, WHETHER THIS BE FOR;

MORTGAGES FROM WHOLE OF MARKET
REMORTGAGES
EQUITY RELEASE
PENSION SHARING ORDERS
INCOME PROTECTION
CRITICAL ILLNESS
LIFE COVER
INVESTMENTS
WORKPLACE PENSIONS

FOR FREE INITIAL MEETING CONTACT
TOM McCULLAGH ON;

OFFICE- 01858575121
MOBILE- 07880963016
EMAIL- tommccullagh@thinkpositive.co.uk



Positive Solutions (Financial Services) Ltd. is authorised and regulated by the Financial Conduct Authority. Registered as a Limited Company in England And Wales No. 3278700. Registered Office: Positive Solutions (Financial Services) Ltd, Riverside House, The Waterfront Newcastle upon Tyne NE15 8NY

STEFAN THE HANDYMAN

Quality woodwork, Painting,
Tiling, Flat-pack assembly,
Wallpapering, Repairs,
Home maintenance, and lots
more...

Not sure it's a job for Stefan? Just
pick up the phone, and ask!

01858 881775

StefantheHandy-
man@outlook.com

Facebook:

@StefantheHandyman

Christmas Windows—Sunday 23rd December 2018

After calling into Welford Youth and Community Centre to purchase a quiz sheet and possibly a cup of mulled wine to savour on the way round, over 40 families set out to complete Welford pre-school's annual 'Christmas Windows' trail. It proved to be the biggest trail to date, featuring 34 windows; all were beautifully adorned and illuminated, exuding festive charm.

Whilst some participants were content to simply admire the windows and their various displays, others needed an incentive to move from one house to the next, and therefore each window contained a children's character that needed to be identified and recorded on a quiz sheet. All returned quiz sheets were entered into a prize draw to win a wonderful children's activity hamper.

When families returned, they were able to enjoy some well-deserved refreshments and browse the various stalls. This year we were delighted to host five external stallholders, with wares ranging from beautiful, fused glass jewellery to fragrantly scented, homemade bath-bombs and soaps. It was the perfect opportunity to pick up any last-minute gifts and support local businesses. As the scent of mulled wine and mince pies emanated from the kitchen and well-known Christmas anthems trilled away in the background, there really was an air of Christmas magic in the Community Centre that afternoon. Perhaps it was in part down to the tangibility of the children's excitement, but perhaps it was also the wonderful community spirit that was at play.

On behalf of Welford Pre-school Committee, I would like to thank everyone who made the event such a success: the stallholders, for working at an event so close to Christmas; all local businesses that donated a raffle prize; the pre-school staff and committee members for their help in organising and running the event; the villagers who decorated one of their windows and, most importantly, all the villagers who supported the event itself. In total we made a profit of £440, all of which will go to supporting pre-school. We look forward to even more villagers supporting us in 2019!

Niamh Bland (Chair of Welford Pre-school Committee)

Golf: The Masters

The female of the species...

Women who seek to be equal with men lack ambition, said the psychologist Timothy Leary. And in the astonishing results of this year's Open and Masters tournaments, the primacy of womanhood in Welford golf is hewn.

After Sheila Scullion's famous victory in the sun-drenched Open in July, we switch to the opposite end of the calendar to see Amanda Edge triumph at the midwinter major. Amanda amasses a colossal 41 points, leaving Adrian Scullion a distant four points behind followed by John Frommont.

Now, she wears the fabled yellow jacket, hand-stitched with the names of ex-winners – all men – dating back to the early 1990s. Unlike most of those men, the jacket fits her. And not finished yet, Amanda scoops the wife-and-husband and team prizes. Her team includes Sheila Scullion.

Previous Masters have been played out, truncated or not played at all in perilous winter weather, but Christmas 2018 is unusually mild. A bumper, but not quite record, turnout of predominantly men heads off into the links-like flatlands of South Kilworth, its bulldozed ridge and furrow so very different from the mountains and valleys of the summer venue, Cold Ashby. A few hours later, they return to find a new Welford order. Even the booby prize goes to a female competitor, Lin Ockenden. Thanks to seven nil pointers, known in the game as 'blobs'. She must now play 2019 with a Mr Blobby toy strapped to her golf bag. All that is left for the men are a few consolation prizes.

Men play the game, women know the score, said actor Habeeb Akande.

Nearest the Pin winners: 2nd Dennis Neale, 6th Stu Nicholas, 12th Graham Bott, 18th Adrian Hoare. Longest drive Matt Johnson.

Bliss & Beauty

**The complete
skincare specialists.**

We offer a huge range of beauty treatments, but we specialise in skincare and facials that really make a difference to your skin.

Dermapen needling, CACI, Dermalux treatments available as well as advanced electrolysis offering skin tag/blemish removal.

**We are an Environ, Jane Iredale and
Advanced Nutrition stockist.**

Please call to book on 01858 571244 or 07773 235433,
or book online at www.blissandbeauty.co.uk

**BLISS & BEAUTY, SMITHS YARD, DOG LANE,
SOUTH KILWORTH, LEICS, LE17 6DY**

JANET FRANCIS-FLORES Bsc (Hons) Podiatrist/Chiropodist, HCPC Registered.

**Home visiting service available.
26 years NHS experience.**

Tel: 07792 408205 for appointments.



Junior Cricket 2019 - It's 1- Day Cricket World Cup Year!



This coming Season sees the ICC 1- Day World Cup take place in England and Wales between the 30th May and the 14th July. With most tickets already sold out for all venues and England one of the favourites to win the tournament, it promises to be exciting year for cricket!

Whilst our junior cricket plans are still being finalised at the time of writing, we are again looking to field junior teams at U11, U13 & U15 level in conjunction with Yelvertoft CC in our local Rugby and District Evening League between the end of April and the end of July. U11's & U15's play on a Thursday evening and U13's on a Tuesday evening. Indoor net practice for all these 3 squads will start on Monday March 4th at Guilsborough Academy Sports Hall and run each Monday between 6.15 pm and 7.15 pm to the 1st Week of April. Simply come along!

For the younger Softball cricketers, we are again hoping to run Kwik Cricket sessions outdoors during May, June and July and are currently looking at the possibility of running the ECB (English Cricket Board) "Allstars" Programme, specifically aimed at introducing ages 5 to 8 to basic Softball Cricket in a safe, fun environment. More details on these will be communicated nearer the time, but details on the "Allstars" Programme can be found on the ECB's Website and will require prior registration with a subsequent "one-off" payment payable.

Junior cricket locally is run by a small team of volunteers who have relevant cricket coaching qualifications, First Aid certificates and DBS clearance. If anyone is interested in joining us, including being the "Lead Activator" for the "AllStars" Programme above, please make contact with me asap, as the appropriate local courses are now filling up quickly.

As in all previous seasons, we are planning to use the facilities at both the Welford Sportsfield and the Yelvertoft Playing Fields, subject to availability and necessary permissions, **but everything is subject to there being sufficient junior interest to do so at all levels. All squads are open to both boys and girls and all squads would really like to see some new faces. Previous Cricket experience is not required!**

For any further information or to register interest, please contact Robin Bennett (ECB Senior Coach) on Bennetrobinb@aol.com or 01858 575631 /07774 839299.



THE WELCOME CLUB

On the 9th January we enjoyed a pleasant carvery at The Wharf to celebrate the start of 2019. Our brains were taxed by one of Bill Wright's quizzes.

We received a very generous donation from Wendy Hague and £250 from Kilworth Challenge. We are most grateful for these which will be helpful to fund this year's outings.

Don't forget - - !

The Welcome Club for older people meets on the 2nd Wednesday of every month, mostly in the main room at the village hall at 2.0pm.

New members are always welcome.

Ring Marian Wright for more information on 575650

POETS' CORNER

RETIREMENT

When I'm called no more to earn my bread
And my hair has receded on my head,
And the days are mine to think and dream
Of all the sights that I have seen,
When what's the time is just a phrase,
and all the summer I can laze.

And when the winter winds blow cold,
I need not venture from the fold,
When I'm no longer in the race,
And I can set my own slow pace,
I hope my sight will never fade,
And I won't need a hearing aid.

*Robin Williams,
Late of Waikanae, NZ*

Totty Teas

Old English Tea Shop

At Welford Wharf

Light Lunches,
Homemade Cakes
and Afternoon Teas.
Locally sourced Ice Cream

OPEN

Tuesday—Saturday
1030–16.30

Sunday 12-30-16.30

Tel 01858 575147

www.tottyteas

tottyteas@gmail.com



HANNAH

— BEAUTY THERAPY —

COLLINS

BY APPOINTMENT ONLY

T : 07736 939993

hcbeautytherapy.co.uk

A Unique One-to-One
Personal Beauty Experience

42 High Street - Welford

Christmas Shoebox Appeal

Thank you to everyone who gave a shoebox or made a donation to this worthy cause.

Special thanks to Jackie, Natalie and Kelvin who helped with the checking, sealing and packing. A total of 212 boxes are now making their way to Romania, Belarus and Kosovo. I wish you all a very Happy Christmas.
Marion Broad



Editor's note -

We apologise to Marion for missing this thank you in the December Bugle.



**FANCY PLAYING HOCKEY?
PLAYED BEFORE OR AT
SCHOOL? COME AND
JOIN US!**

Come and play hockey with our small, friendly and competitive club.

Y1-4/Newbies (U8s) train at Naseby Playing Fields, 10-11 on a Sunday

Y5-6 (U10 & 12s) also train at Naseby Playing Fields, 11-12 on a Sunday

All other ages and adults train at Rugby College, Technology Drive, Rugby from 18.20-19.50 (lifts available from Welford) on a Wednesday

See the website

www.welfordmixedhockeyclub.co.uk for more details

We also have room on our committee for volunteers who can help us with the running of the club. All you need is enthusiasm and about an hour a month!

YOGA IN NORTH KILWORTH

Fran Ritson

(Qualified Teacher - British School of Yoga)

07769 805588

fran.ritson@gmail.com

Monday 10am (45 minutes) £5pw Yoga Light & Chair Yoga.

Monday 11am (1 hour) £5pw.

6 weeks - £26, 8 weeks - £34, 10 weeks - £42.50.

Wednesday 7pm (90 mins) £6pw or

6 weeks £33, 8 weeks £44, 10 weeks £55

Please text or email in advance to arrange attendance.



Greg Palmer

m 07814 401 244

t 01858 571 093

e gregpalmer21@hotmail.co.uk

ws www.gpgardeningservices.co.uk

PW RURAL SERVICES

EQUESTRIAN & AGRICULTURAL CONTRACTOR

- Riding School & Stable Repairs
- Paddock & Estate Maintenance
- Grass Cutting & Topping
- Chain Harrowing & Rolling
- Hay Making & Small Baling
- Saw Bench & Log Splitting
- Overgrown Gardens Cleared

Peter Wattam at
Mobile: 07860 524642
Email: pwr@outlook.com

**Open in
school
holidays**

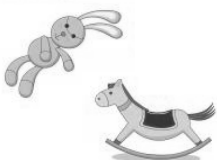



**First
session
free!**

WELFORD BABES AND TOTS

Stay and play with your little one, meet other parents and carers, refreshments provided for you and your children, lots of fantastic toys. Expectant mums and newborns welcome!

Fridays, 9.30am – 11.00am
Welford Youth and Community Centre
£2.00 first child, 50p additional children,
free for pre-crawlers and adults



 Welford Babes and Tots
Contact: Lucy on 07891287626
or Claire on 07837852364
or Helen on 07585669897

JANET ROBERTS FCA
CHARTERED ACCOUNTANT



For friendly advice on financial matters including:

- Annual & Management Accounts Preparation
- Self Assessment Tax Returns
- Business Planning and Forecasting
- VAT and Payroll Advice
- Corporate and Personal Tax Returns

Quotations given

Free Initial Consultation

112-114 St Mary's Road, Market Harborough

01858 461567 janet@janetrobertsaccountants.co.uk



Welford Cinema

DARKEST HOUR PG

Starring: Gary Oldman, Lily James, Kristin Scott Thomas

In May 1940, the fate of Western Europe hangs on British Prime Minister Winston Churchill, who must decide whether to negotiate with Adolf Hitler, or fight on knowing that it could mean a humiliating defeat for Britain and its empire.

Saturday 2nd February 2019



Starring: Sheila Hancock, Kevin Guthrie, Paul Brannigan

83 year old Edie believes that it is never too late - packing an old camping bag, leaving her life behind and embarking on an adventure she never got to have - climbing the imposing Mount Suilven in Scotland.

Saturday 2nd March 2019

Find out more at www.welfordcinema.co.uk

7.30pm at Welford Village Hall

Tickets £5

Which can be obtained in advance from Penny on 01858 575812 or Phyllis on 01858 575284 or on the night on the door.

Ticket includes refreshments in the Billiard Room after the screening.



Churchyard Extension Mowing

Many thanks to all our volunteer mowers, who kept the cemetery looking in good order last year. Let's hope we have another dry summer this year that means the grass does not grow quickly.

As usual I will assume that you will help again this year starting after a professional cut at the end of March or early April depending on how early the grass starts growing again. Sue will send out the rota in February once we know how many volunteers we have.

If you would like to help, please contact Sue or John Nicholas on 575422 or email s.e.nicholas@btopenworld.com.

You would be very welcome, and there is a certain satisfaction when you have done your stint, knowing you have done something to help the community.

LENTEN LUNCH 2019

Lent starts on the 6th of March this year and Alan and Ann Barraclough have kindly agreed to host it this year at 38 West End. You are warmly invited to come along from 12 noon until about 1.30 p.m. and enjoy some delicious soup and various types of bread, followed afterwards with some fresh fruit and a cup of tea or coffee.

The cost remains at £3 per head and £2 for children. If you think that is terrific value you would be correct! Most people buy several raffle tickets to increase the money raised for charity.

We hope to see you there

Professional hair styling in your own home

hair by **J**ulie

Call Julie Bentham on:

Tel: 01858 575675*

Mobile: 07891 426055



Member of the Freelance Hair and Beauty Federation

* Note new phone number

Seasoned Hardwood & Kiln Dried Firewood, Coal & Kindling.

Sourced from Local Sustainable Woodlands

FREE, Fast, Friendly & Reliable Delivery Service

Carried and stacked in a location of your choice.

Contact: Mark 07813 103995

Email: whmestate@btinternet.com

or website: www.whmestate.com



Good Neighbours

Coffee Mornings 2019
Village Hall 10.00-12.00

(First Tuesday in the month)

February 5th

April 2nd

June 4th

August 6th

October 1st

December 3rd

March 5th

May 7th

July 2nd

September 3rd

November 5th



Stanford Road, Cold Ashby, Northampton NN6 6EP
Tel: 01604 740548
www.coldashbygolfclub.com

Full Membership just £59.95 per month*

Lifestyle Membership £325.00

Pay and Play from £12.00

Sandy's Bar & Restaurant open all day to the public

Get 10% off your next round with discount code WEL10 when booking online at www.coldashbygolfclub.com

* Terms and Conditions apply

27 Hole
Golf Course &
Driving Range

Footgolf

Golf Lessons
for Beginners
& Experienced

Join
NETWORK.golf
and play free
golf at over 30
clubs



Topping the Leagues!

It's been an awesome start to the 2018/19 season this year for the club. The Mixed Team currently sit 2nd in Division 1, the Vics are 3rd in Division 2 and the Badgers are also top of their league! We couldn't be prouder of the hard work of all the players and coaches that has made

this possible. It's made all the more incredible seeing as we are such a small village. To be competing and succeeding at county levels is just brilliant.

We've seen an increase in membership this year in the juniors and adults and we are hoping to continue this increase across the secondary school age group so if you've ever tried hockey and enjoyed it, please come and join us on a Wednesday evening at Rugby College from 18.20-19.50. Your first session is free!

Remember, you can follow us online www.welfordmixedhockeyclub.co.uk on Facebook - Welford Mixed Hockey Club - and Instagram @welfordmixedhockeyclub Use the hashtags #wmhc or #mixedhockey and tell us what you are up to!

As always, thanks to all our supporters and volunteers!

Julia Bennett

PAINTING & DECORATION

Ruth Whitehead

Available now to transform your home

**With over 30 years experience
I can breathe new life into your
Walls, doors, furniture and floors**

01858 575373 or 07984 305227

Gary Matthews

Traditional Mole Catcher,
Farm / Domestic.

Certificated
Moles/Rodents/Rabbits/Wasps.

Welford

01858575552

07787348951



Mary Adkins 1928 - 2019



Mary's family was the thing she cared about most. She was mother to 6, grandmother to 10 and great-grandmother to 4 with another on the way. She was born in Welford, sister to Joyce and Cliff, and grew up in and around Welford and Husbands Bosworth. She was always very fond of children and her very first job was in a nursery, which she was very sad to leave. She then worked at Elkington, and that was when she was introduced to Ted. They married at Husbands Bosworth church in 1950. Their first home was in Green Lane, Bosworth, where Nigel, Andrew, Trevor and Robert started their lives, moving to Welford in 1955 where Stephen and Jennifer were born. In 1960 they moved into a larger house in Westfield Crescent, which was the family home until 2017.

As her son Andrew said at Mary's funeral, "We can only wonder at how she coped with 6 children, all born within the space of 10 years. At how she managed what must have been a military operation in keeping us all so well fed and watered and smartly dressed for school. We never went without breakfast; her scrambled egg was always yummy. She was so proud at being complimented on the whiteness of her boys' school shirts. You may remember that she kept our relatively small 3-bedroomed house immaculate, which must have been a real challenge with 8 of us living there. Looking back, Mum and Dad gave us such a happy life and always managed to take us on regular summer holidays, often to East Runton, Butlins or Pontins, with Dad borrowing a van to fit us all in. Our Christmases, especially when we were growing up, were always happy too. We often wondered how Mum and Dad gave us so much. There was always plenty of food on the table and lots of presents for each of us. Although money was saved in a Christmas club, it was amazing how they did it.

Mum was never happier than having people at home and making sure everyone was fed and watered. There was always food in the cupboard and cake in the tin. As we grew up and gradually left home and had our own families, she loved to have the grandchildren visit and Granny's door was always open. We are grateful that Mum and Dad were able to celebrate their Golden Wedding anniversary in the year 2000, before our dear Dad passed away in 2001. Then sadly our brother Trevor died in 2010, both of which, naturally, hit Mum very hard.

Mum was a dignified woman of simple needs and pleasures and never wanted to cause a fuss. She instilled in us a sense of always doing the right thing and thinking of others. Over the years each of her children have given her cause to worry, but she was always there with open arms. Her budgeting skills are to be envied. She would never be in debt and kept various pots in the cupboard, where she carefully stored the cash to pay each bill. Even though she deserved to spoil herself in later life, she would balk at the price of clothes and shoes which she could easily afford."

Mary's daughter Jennifer writes-" Mum was obviously kept very busy bringing up such a large family but she managed to work during the evenings at the Elizabethan restaurant to supplement the family income. In the 70's she became a playground supervisor at Welford School - a job she loved, being with children - moving to work in the school kitchen where she enjoyed her time with staff and colleagues. Never one to be idle, she carried on working for many years after the school kitchen closed with cleaning jobs in the village until it became too much for her."

Betty Barlow was her near neighbour and great friend for 50 years. They enjoyed regular chats over coffee or sherry, and although Mary was not a church-goer she helped Betty look after the church, and together they supported many village events. A memorable outing for them both was when Trevor took them to The De Montfort Hall in Leicester to hear Englebert Humperdinck.

It was almost 4 years ago that Mary had a fall and broke her hip and was also diagnosed with a serious heart condition which meant it was inoperable. After spells in hospital, rehab and at home the onset of Alzheimers meant that the family made the difficult decision for her to move into Brook House care home in June 2017, just across the road from her first family home in Husbands Bosworth, where she was cared for for the last 18 months of her life. A highlight of her stay was an appearance on Central television with a visiting donkey which many people in Welford saw.

WELFORD W.I.



DECEMBER MEETING

A large number of members, family and friends joined us at St Mary's Church for our meeting which was a Carol Service. Before the service began, a few notices were read out, December birthdays noted and details of our January 2019 meeting given.

A selection of poems and Bible readings were read by members, interspersed with popular carols. The Village Choir performed three seasonal songs. Welcome refreshments were enjoyed and a collection for Headway, raised £175.01. Many thanks to all who organised this festive occasion and to those who attended. *AT*

December 2018

JANUARY MEETING

President Denise Bott started the January meeting by wishing the 33 members and 1 guest present a Happy New Year. She started the new year by presenting trophies to the winners of 2018's Table Competitions. The winner was Sue Lees, joint 2nd were Jane Cottrell and Pauline Matthew with Christina Williams 3rd. She then thanked the sub-committee responsible for the very well attended Carol Service that was December's meeting. Catherine Digby sent around a card listing half a dozen different activities on offer by NCFWI. The members were told of Welford WI's own events:- a Knit n Natter 26th February, an evening meal 17th April, and a dinner and theatre evening at Tolthorpe 15th August. Members were encouraged to take part in Walking Netball, held weekly in Wellingborough. Members were also reminded to hand in their voting slips for the 2019 resolutions. The slips are printed in December's WI Life and can still be handed in at February's meeting. Jane Barnes was introduced to the members and gave all an insight into the many and varied demands of not only being a Dairy Farmer's wife - the subject of her talk - but also of being a dairy farmer herself. She talked, entertainingly, of her family and the farm, of their pedigree Ayrshire herd and of their involvement with Long Clawson Cheese. She also had some tasty cheeses available to buy.

The competition for a farm animal (not a live one), run by Ann Thorington, was won by Ann Barber, 2nd Pauline Matthew and 3rd Frances Stacey. The raffle, organised by Hilary Downing, was won by Lindsey Palmer, Jean Tyrrell and Val Read.

AT January 2019



WELFORD RAINFALL IN MILLIMETRES



	2007	2008	2009	2010	2011	2012	2013	2014	2015	2016	2017	2018
JAN	70.0	89.0	56.5	59.0	41.5	46.5	58.0	119.0	59.5	81.0	59.0	68.0
FEB	66.0	24.5	47.5	52.0	54.0	23.5	42.0	74.0	41.0	43.0	59.5	29.0
MAR	55.0	76.0	30.0	40.5	7.5	27.0	62.0	43.5	27.0	78.5	54.0	166.5
APR	3.0	46.5	34.5	27.5	5.5	155.0	22.5	31.0	25.5	50.0	10.5	65.0
MAY	109.0	71.5	35.5	26.5	31.5	55.5	75.5	109.0	54.0	45.0	80.0	85.0
JUN	116.0	44.5	43.0	49.0	59.0	135.5	41.5	69.0	26.0	77.5	52.0	1.0
JUL	107.5	64.5	157.0	47.0	41.0	99.0	92.0	31.0	81.5	19.0	71.0	14.5
AUG	32.0	102.0	52.0	143.5	53.0	94.5	51.0	95.5	53.0	56.0	78.5	52.5
SEP	30.5	91.0	24.0	53.0	20.0	51.5	26.0	8.0	50.5	45.0	79.0	36.0
OCT	46.0	65.0	26.5	46.0	35.5	72.0	113.0	73.0	60.0	35.0	21.5	46.0
NOV	57.5	77.5	69.5	49.5	36.0	127.5	39.5	82.0	65.0	79.5	44.0	40.5
DEC	59.0	48.5	69.0	22.0	64.5	135.5	51.5	54.0	75.0	24.0	100.5	67.5
TOT	751.5	800.5	645.0	615.5	449.0	1,023.0	674.5	789.0	618.0	633.5	709.5	671.5

F.J.S.



FLAGS

FEBRUARY 2019

6th Queens Assession
19th Duke of York

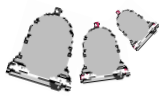
MARCH 2019

1st St Davids Day
6th Ash Wednesday
10th Earl of Wessex
13th Commonwealth Day

WELFORD ON THE WEB

You can read The Bugle on the Welford Web Site, as well as all sorts of interesting things about the village, by clicking onto : - www.welfordvillage.co.uk
Also find the WADS website on:- www.welford-drama.org.uk
And twitter on [@WelfordVillage?](https://twitter.com/WelfordVillage)

BELL RINGING PRACTICE :



1st. and 3rd. Monday each month, 7.30pm. to 9.00pm.

New ringers always welcome.

BUGLE NEWS

The Bugle is here to let everyone in Welford know what is going on in the village and appears early in February, April, June, August, October and December. Letters and articles for inclusion are always welcome.

It saves paper and some time in putting the issues together if articles are presented if possible as emails. They can be sent as attachments in MS Word and can then be easily used.

However don't worry if hand written paper is your preference, it is still welcome. So, if you have an item which you would like published, if possible email it to:

welfordbugle@outlook.com

If you are unable to e-mail then you can find our postal addresses on the front page.

Please ensure any articles are received by the copy date on the cover. Thanks. AP



Open to the Public

Golf Course, Driving Range, Tuition

Bar & Restaurant - Open All Day

Event & Conference Facilities

T: 01858 575 082

E: admin@kilworthsprings.co.uk

W: www.kilworthsprings.co.uk



NORTHAMPTON ROAD
Tel: 01858 575396

Opening Hours

Monday-Friday 7.30am-7.00pm
Saturday 8.30am-6.00pm
Sunday 9.30am-5.00pm

PETROL, DIESEL, PARAFFIN, CALOR GAS

Servicing, M.O.T. and repairs Undertaken

LICENCED AIR CONDITIONING SERVICE AVAILABLE

MOTOR ACCESSORIES + PRE-PACKED COAL AND COKE

Eggs + Milk + Potatoes and General Groceries

CONFECTIONERY + SOFT DRINKS

Sandwiches and Pasties

CAR SALES

KELVIN BROAD

PLUMBING HEATING
ELECTRICAL

24 hr Emergency Service



FREE ESTIMATES
All Work Guaranteed
References available

3 Newlands Road
Welford

Welford 575683



The Wharf Inn



CAMRA RURAL PUB OF THE YEAR NORTHANTS

The Wharf Inn
Welford
Northamptonshire
NN6 6JQ
01858 575075



Real Ales

Home Cooked Food

B&B

Large Beer Garden



WE CATER FOR ALL OCCASIONS
TEA PARTIES-BIRTHDAYS-CHRISTENINGS
CORPORATE EVENTS-SMALL WEDDINGS
- CELEBRATIONS OF LIFE -

WWW.GREENSCK.CO.UK

E: DEBBIE@GREENSCK.CO.UK

T: 01858 571104



Jon Smurthwaite Bookkeeping

Providing flexible, friendly & professional bookkeeping and accounting services to local people and businesses.

Tel: 07887 585217 / 01858 575842
E-mail: info@jonsbookkeeping.co.uk
Website: www.jonsbookkeeping.co.uk

Jonathan Smurthwaite FCA
43, The Leys, Welford, Northamptonshire, NN6 6HS



KNIT 'N' NATTER in the Village Hall Billiard Room

Would you like to enjoy a sociable couple of hours? Come along and participate in our very cheerful Knit and Natter session. Knowing how to knit, or even liking knitting is not necessary - you can be shown how to knit, or crochet, or just come along and take part in the general natter. Yarn and needles will be available or bring along your own - size 8 / 4mm needles and double knit yarn.

£3.00 per person includes tea and cake. There will be a raffle and ALL takings will be donated to the Headway Northampton - the charity that specialises in the care and long term rehabilitation of severe head trauma

The Wharf Basin and Canal Rivers Trust

We've seen quite a bit of activity down at Welford Wharf recently. Part of this activity has been to line up the wharf area ready for the 50th anniversary of the re-opening of the Welford Arm of the canal in 1969, which will take place over the weekend of May 17th - 19th, organised by The Old Union Canal Society and supported by Canal & River Trust. The arm had been closed to boats for almost 20 years, only serving as a water feeder to the main canal from Sulby and Naseby reservoirs. Another concern that has been raised with Canal & River Trust (CRT) managers is the future of the wharf warehouse building. The building has been allowed to deteriorate, mainly due to a lack of use in recent years. The Trust are currently looking at the viability of the whole site and have already, controversially sold off the old stable buildings. However, the constraints of the listing of the warehouse, the requirement to maintain boaters' facilities, the shared access and the siting of the building close to the canal wharf effectively renders it unsaleable.

After some discussion it became clear that the Trust is keen to find a use and generate income from the site, and were interested in suggestions, subject to planning consent, to offer lock-up workshops or office space for small businesses in the central, two storey part of the wharf building.

Meanwhile The Trust are planning to carry out some restoration and are now seeking expressions of interest from local groups or businesses. Anyone interested in this project are asked to contact Mike Johnson on 01858 575920 or email: michaeljohnsonuk45@gmail.com

Mike is trying to assemble a collection of old Photographs, Sketches, or Paintings that relate to the canal or the Welford Basin which can be scanned and printed out for a display during May 17th—19th. Mike will only need to borrow things, as they will be scanned into the computer and then returned. Alternatively, they could be dropped at Mike's to be scanned immediately. Please call before coming round just to make sure Mike is in. Your help would be much appreciated.

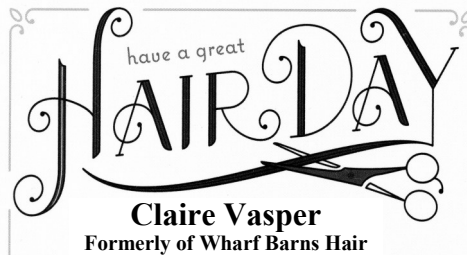
Keep in touch

Sign up for the Canal & River Trust e-newsletter
<https://canalrivertrust.org.uk/newsletter>

Become a fan on <https://www.facebook.com/canalrivertrust>

Follow us on <https://twitter.com/canalrivertrust> and <https://www.instagram.com/canalrivertrust>

New salon open in Brixworth



Claire Vasper
Formerly of Wharf Barns Hair

07949 404519
clairevasperhair@gmail.com

Barry Jones

Electrical Contractor

Stonebridge House
Back Lane
Shearsby
Leics LE17 6PN
Tel: 0116 247 8077
Mobile: 07831 474700

- + No job too small
- + Free Estimates
- + Reasonable prices
- + All work guaranteed

Experienced English Tutor SATs - KS3 - GCSE

- Boost your confidence
- Make progress
- Be exam ready



— For Bookings and Enquiries —

Phone: 01858 575794 / 07974 778861
Email: NewEnglishProgress@gmail.com
Facebook: [@newenglishprogress tuition](https://www.facebook.com/newenglishprogress tuition)

Welford & Sulby Historical Society; Memories Matter.

A most sincere Thank You to all those who responded to our survey in the autumn. We were delighted by the response. And also to all the members of the society who gave up their time to deliver and collect the sheets.

It will take a while to process the information you have recorded, therefore, more details regarding our conclusions, will be revealed later in the year.

Watch this space!!!

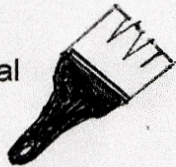
Nearly a 100 of you have indicated you would be happy to have further conversations regarding your memories! As you can imagine...this will take some time but rest assured, a member of our group will be contacting you in due course to arrange a suitable time for a visit and have that chat.

Denise Bott & Bill Wright.

Painter & Decorator

Adam Farmer

Local Qualified Professional
Reliable and trustworthy
Reasonable rates
Quality materials



For free quotation: Call or e-mail

Adam on 07938739205

adamfarmer86@live.com



MAKE YOUR SPECIAL EVENT ONE THEY'LL NEVER FORGET...

Interactive Photo Booths and Activities for parties, corporate events and weddings. Tailored packages to suit any occasion and budget.

Tel: Lucy 07764 533076

Email: lucy@photoboothplus.co.uk



It would be lovely to have more of a Welford presence on Facebook because love it or hate it, it is a great way to spread community news and discussions. So, we have decided to phase out the Welford Facebook page as it isn't particularly user-friendly and

have instead created This Is Welford - a group for all Facebook-using residents of Welford and the surrounding area. So please join us (do a search for This Is Welford in groups and we'll also put a link on the Welford Facebook page).

Hannah Bedard and Lucy Parsons

Nature Notes

Frost, sleet, snow, sunshine, showers, rain and fog. We've had some of each in the last couple of months, but on the whole it has been drier and warmer than usual for the time of year, and the great thing is that it is getting noticeably lighter by the day. We have aconites, snowdrops and little mauve crocuses in bloom and all the other bulbs shooting with the promise of spring.

Our fields are empty of stock. The sheep have gone home to lamb under cover, but we shall soon hear the early lambs bleating for their mothers in the local fields. It's a bit like spotting the first swallow - 'have you heard a lamb yet?' Talking of swallows, they were so late and so few last year that I worry that they will follow the example of the cuckoo which has left our patch of country. It's the RSPB big bird watch about now, and we have become fearful of the decline it may indicate. Certain oases of land have been specially set aside to encourage wildlife, and on programmes like Countryfile we see that given the right conditions it is not doom and gloom everywhere.

I do have a new mission, which is to pick up plastic whenever possible. Walking across fields there are so many tiny pieces, which will end up in watercourses or being inadvertently eaten by stock. If we all tried to dispose of some of this rising tide properly it would help. Our solar panels are also helping the planet a bit, though we have had too many dull days recently. The output has ranged from .98 of a kilowatt hour to 10.2 a day recently. The best day last summer achieved 51KwH, which was amazing. I have the washing machine going as I write this as the output is good enough to put to use. We have also had the newer part of the house, which has cavity walls, insulated.

We are still doing what we can to be self-sufficient in vegetables. We are still eating lots of vegetables from the garden, and are even finding some early Purple sprouting brocoli, and we have lettuces growing in pots in the greenhouse. The seed order has come, with a good discount thanks to Welford Gardening Club, so it will soon be time to get on with the gardening, and to plant new potatoes in the greenhouse again, it worked so well last year. Like Monty Don, I have lots of plastic pots and seed trays which, with care, I can use for many years to come.

So, with snowdrops ready for Candlemas day (February 2nd) when they say the cold will strengthen as the days lengthen, there are now some sunny days when we can all enjoy signs of spring.

Susie Bevin



WELFORD VILLAGE CALENDAR

February 2019	March 2019	April 2019
2nd—Film Darkest Hour 5th GN Coffee morning 9th Gingo 16th Sportsfield Quiz 26th knit 'n' natter	2nd—Film Edie 5th GN Coffee morning 6th Lenten Lunch 27th—29th WADS Hi de Hi	2nd GN Coffee morning 6th—Film TBA
May 2019	June 2019	July 2019
7th GN Coffee morning 17th-19th Welford Arm Anniversary	4th GN Coffee morning	2nd GN Coffee morning

Come and join your local friendly WI!

Fancy trying some crafting, going to the theatre, walking with friends, having a meal out or just a friendly chat at our monthly meetings, where this year you can hear experts on inspiring women like The Women's Land Army and Amy Johnson, learn about fabric dyeing or folk music and be entertained at a joint meeting with Naseby for Christmas?

When: second Thursday in the month

Where: the village hall

Time: 7.30-9.30

For more information see the noticeboard outside the village hall, visit our facebook page or contact Denise Bott (575746) or Jane Cottrell (575549).

You will be very welcome.

SimplyBePilates
 Looking after yourself.
 Classes held in Welford Youth & Community Centre
 These are intermediate only with limited availability
 Beginner course will start in November-numbers limited to 6
 1-1 & 1-2 Sessions also available at Stable Barn, Glebe Farm
 Please contact Anne:
 07738119606


SPRINGFIELDS LOCAL VILLAGE SHOP, POST OFFICE & NEWSAGENTS

High Street, Welford

Groceries, Dairy, Fresh Meat,
Fruit & Veg, Wines & Spirits,

National Lottery,
Fresh Bread Daily

Tel 575666

SUPPORT YOUR LOCAL STORE

F & W Plumbing & Heating Services Ltd

North Kilworth, Lutterworth, LE17 6HX

Bespoke Bathroom & Kitchen Design & Installation.

Over 30 years experience in Designing and Installing Contemporary to Traditional Kitchens and Bathrooms.

Plumbing | Joinery | Plastering | Electrical | Decoration | Floor & Wall Tiling

Gas Safe Reg. No 75883 | Hot & Cold Water System Upgrades | Boiler System Upgrades

Call Jason for Free Quotations | Ideas & Inspiration on 07866 741261.

Email: jayspanner@btinternet.com

Professional | Committed | Competitive | All Work Guaranteed

JJ's Kiddycare



- 'OUTSTANDING' Ofsted grading
 - Free pre-school sessions for 2,3& 4 year olds
 - Full day care for 0-5 years
 - Situated on a farm site between South Kilworth and Welford
 - After school clubs (4-14 years)
 - Holiday Clubs during all Leics and Northants hols
- www.jjs-kiddycare.co.uk Tel. 01858 575642
jjskiddycare@hotmail.co.uk



LANDSCAPE &
PROPERTY SERVICES

**PLEASE CONTACT THOMAS
FOR A NO OBLIGATION FREE QUOTE:**

07525064220

twlandpservices@outlook.com
www.twlandpservices.com

Offering a wide range of Hard and Soft Landscaping

Fencing & Repairs - Garden Maintenance & Clearance
 Tree & Hedge Pruning - Turfing
 Driveway Installation & Maintenance
 Patio Installation & Maintenance - Decking
 Timber Cabin, Shed, Stable and Garage Builds
 Ponds & Water Features - Concrete Bases
 Household Repairs & Maintenance

WHAT'S ON IN WELFORD

REGULARS - weekly, unless stated otherwise

MONDAYS

Welford Pre-school 9.00am-3.00pm	PSM
Yoga for All 10.00-11.30am (starts 12/9/16)	VH
Bell-Ringing 1 st and 3 rd week 7.30pm	CH
Rainbows 5-7 years 5.15 - 6.00pm	WYCC
Brownies 7-10 years 6.15 - 7.30pm	WYCC
Guides 10-14 years 7.30 - 9.00pm	WYCC
Table Tennis for adults - any time between 7.00-9.15pm	VH
ISE Group (Stitch & Expression) 10.00-4.00 2nd Monday of the Month	VH
Singing alternate Mondays 7.30-9.00	WSF
<u>Cricket Nets from Monday 27th Feb</u> (Hard Ball Teams) 6.15 – 7.15	GUIL

TUESDAYS

Welford Pre-School 9.00am-3.00pm	PSM
Doctor's Surgery 9.00-11.30am	VH
Pilates 9.30-10.30am	WYCC
Pilates 7.30-8.30pm	WYCC
Bowls Club 7.00-8.30pm (starts 6/9/16)	VH
Bridge Club 7.30-10.00pm (1st and 3rd Tuesdays of every month starts 6/9/16)	VH
<u>Cricket Nets from Tuesday 1st March</u> U15s & U19s 7.00-8.30pm	LS

WEDNESDAYS

Welford Pre-School 9.00am-3.00pm	PSM
Welford Watercolourists 9.00am-12.00	VH
Ladies Fellowship 1 st and 3 rd week 2.30pm	CSR
Welcome Club 2 nd week 2.00-4.00pm	VH
Yoga for All 7.30-9.00pm (starts 14/9/16)	VH
Gardening Club second Wednesday in the month 7.30-9.45pm	VH
P.C. Planning Com. 6.30pm 2nd week	VH
Girls (6-11) Football training 4.30-5.30	WSF
Tennis Club Night 6pm	WTC

Hockey Training

U14s U16s(Badgers) & Adults 6.20-7.50	RC
---------------------------------------	----

THURSDAYS

Welford Pre-School 9.00am-3.00pm	PSM
Doctor's Surgery 9.00-11.30am	VH
Dancing for Fun 9.45-11.15am	VH
Pilates 6.00-7.00pm	WYCC
Parish Council 4 th week 7.30pm	VH
Women's Institute 2nd week	VH

FRIDAYS

Welford Pre-school 9.00am-3.00pm	PSM
Babes and Tots 9.30-11.00am	WYCC
Beaver Scouts 6-8 years 5.00-6.00pm	WYCC
Cub Scouts 6.15-7.15pm	WYCC
Scouts 7.30-9.00pm	WYCC
Dancing for Fun 7.00-8.30pm	VH

MONDAY - FRIDAY

8.00am - 8.45am Breakfast Club	PSM
3.15pm – 6.00pm After School Club	PSM

SATURDAYS

Football – reception & Yr 1 9.30-11.00am	WSF
--	-----

SUNDAYS

Hockey Training (22/4/18 – 20/5/18)

U8s (Y1-4) and Newbies 10.00-11.00am	NPF
U10 & 12s (Y5-6) 11.00-12.00	NPF
Explorer Scouts 14-18 yrs 7.00-8.30pm	WYCC

EVENTS

FEBRUARY

2nd—Film Darkest Hour	VH
5th GN Coffee morning	VH
9th Gingo	WYCC
16th Sportsfield Quiz	WYCC
26th knit 'n' natter	VH

MARCH

2nd—Film Edie	VH
5th GN Coffee morning	VH
6th Lenten Lunch	
27th—29th WADS Hi de Hi	VH

VENUES:

RC	Rugby College, Technology Drive, Rugby
CH	Church
CSR	Chapel School Room
PSM	Pre-School Mobile
SCH	School
VH	Village Hall
WSF	Welford Sports Field
WYCC	Welford Youth and Community Centre
LUT	Lutterworth College
MH3G	Market Harborough 3G
GUIL	Guilsborough School Hall
LS	Lawrence Sheriff School
NPF	Naseby Playing Fields
WTC	Welford Tennis Courts

For further information or to have your dates listed please contact Phyllis Hayhurst, telephone 01858 575284
Keep up to date with events or advertise on www.welfordvillage.co.uk or follow @Welfordvillage on twitter